

**FOR SALE OR LEASE**  
**±4,000 SF INDUSTRIAL BUILDING**

**1518**  
**EAST 15<sup>TH</sup> ST**  
LOS ANGELES | CA 90021



FOR MORE INFORMATION, CONTACT ►

**JEFFREY RINKOV**

CEO | LIC NO 01238887  
jrinkov@lee-associates.com  
213.400.7941

**SAM RINKOV**

Senior Vice President | LIC NO 02132512  
srinkov@lee-associates.com  
818.324.4329

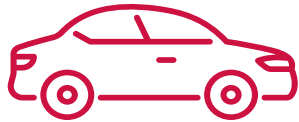
**ETHAN RINKOV**

LIC NO 02253349  
erinkov@lee-associates.com  
818.325.5175

# PROPERTY HIGHLIGHTS



Free Standing Clear Span Brick Building



4 Car Parking



Approximately 1,200 SF of HVAC Office



Excellent Access to 10, 60, 5 & 101 Fwys

**SALE PRICE**

**\$1,060,000**

**LEASE RATE**

**\$1.00/SF GRS (\$4,000/Mo)**



# PROPERTY DETAILS



BUILDING SIZE

±4,000 SF



LAND SIZE

±4,800 SF / ±0.11 AC



YEAR BUILT

1962



ZONING

LAM2

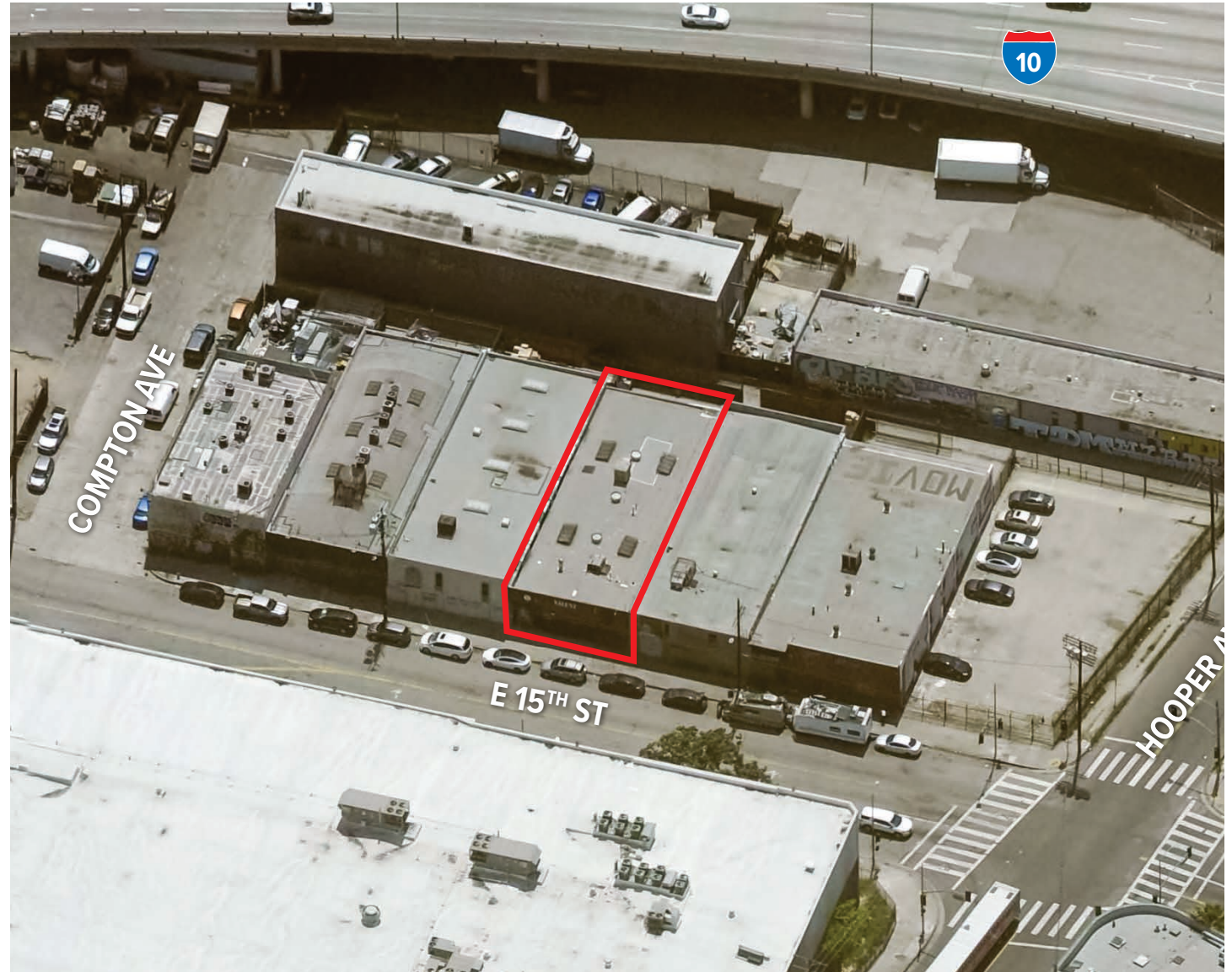
PROPERTY TYPE

Industrial

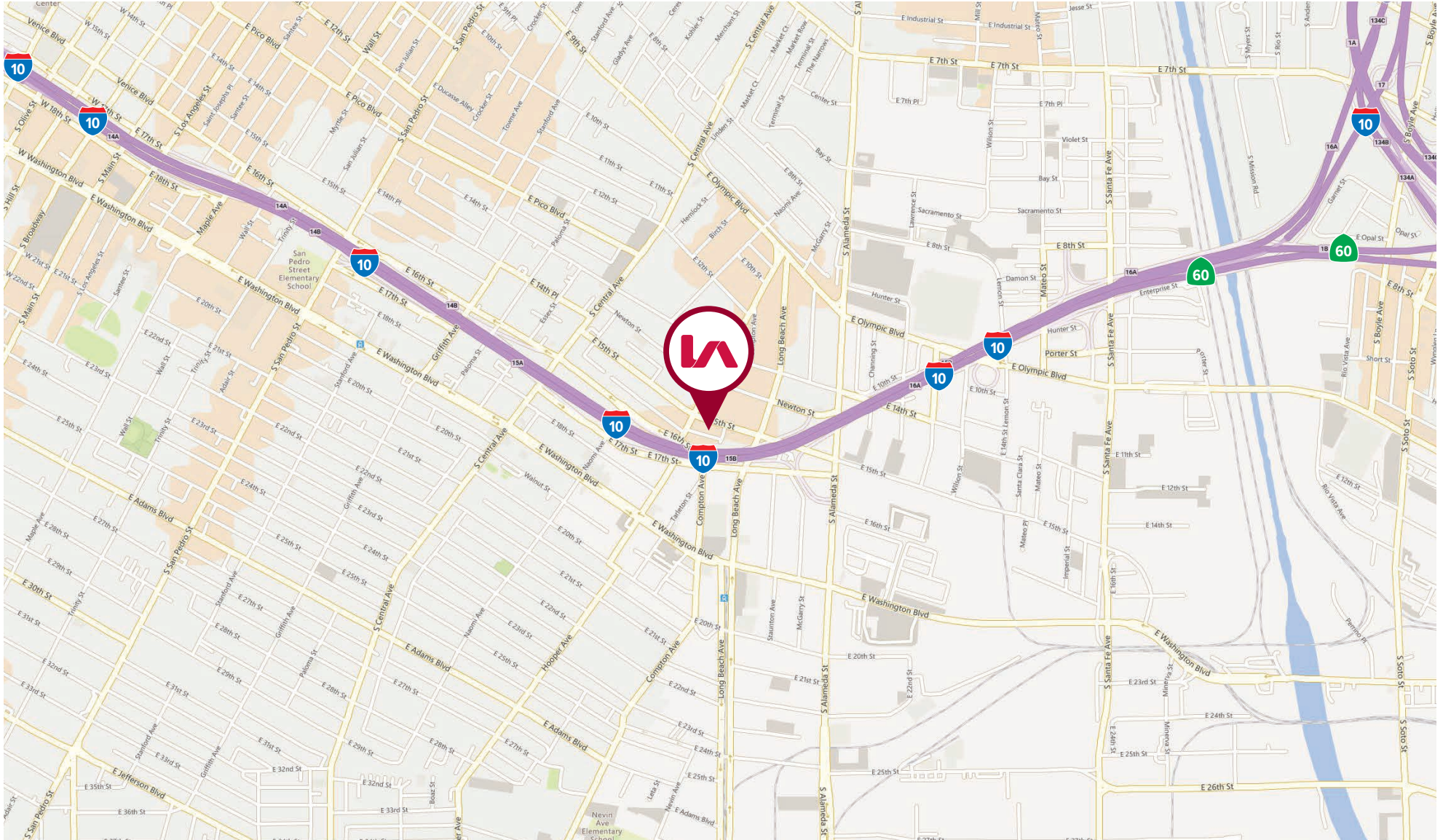


APN

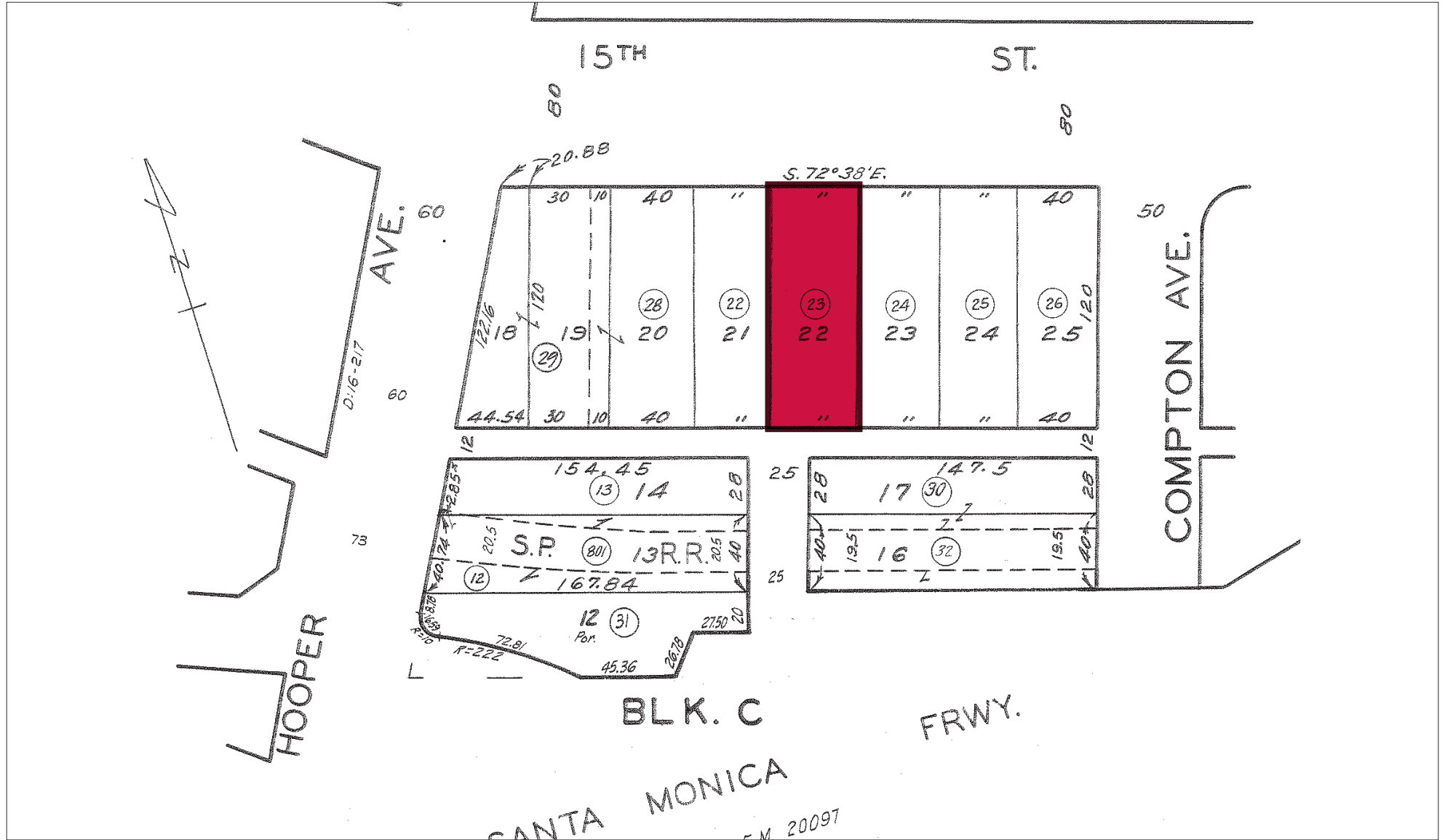
5130-016-023



# PROPERTY LOCATION



# PROPERTY PARCEL MAP



FOR SALE OR LEASE | ±4,000 SF INDUSTRIAL BUILDING

1518 E 15<sup>TH</sup> ST, LOS ANGELES, CA 90021

DOWNTOWN LOS ANGELES

2.22 MILES

BNSF RAILWAY HOBART YARD

2.83 MILES

LOS ANGELES INT'L AIRPORT

10.32 MILES

PORT OF LONG BEACH

19.56 MILES

PORT OF LOS ANGELES

20.44 MILES

FOR MORE INFORMATION, CONTACT ►

**JEFFREY RINKOV**

CEO | LIC NO 01238887  
jrinkov@lee-associates.com  
213.400.7941

**SAM RINKOV**

Senior Vice President | LIC NO 02132512  
srinkov@lee-associates.com  
818.324.4329

**ETHAN RINKOV**

LIC NO 02253349  
erinkov@lee-associates.com  
818.325.5175

Lee & Associates | Downtown Los Angeles 1201 N Main St  
CORP ID 02174865 Los Angeles, CA 90012

The information has been furnished from sources which we deem reliable, but for which we assume no liability. Any projections, opinions, assumptions or estimates used are for example only and do not represent the current or future performance of the property. Buyers should consult with their independent advisors to determine if the property is suitable for their needs.