

FOR SALE

±13,356 SF INDUSTRIAL BUILDING

1372 EAST 15TH ST

LOS ANGELES | CA 90021



FOR MORE INFORMATION, CONTACT ►

JEFFREY RINKOV

CEO | LIC NO 01238887
jrinkov@lee-associates.com
213.400.7941

SAM RINKOV

Senior Vice President | LIC NO 02132512
srinkov@lee-associates.com
818.324.4329

ETHAN RINKOV

LIC NO 02253349
erinkov@lee-associates.com
818.325.5175

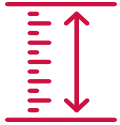
PROPERTY HIGHLIGHTS



Freestanding Warehouse



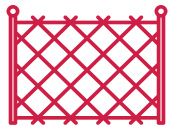
Front/Rear Loading - 4 GL Doors



18' Minimum Clear Height



Refurbished Office Space



Gated Parking

SALE PRICE

\$3,339,000



PROPERTY DETAILS



BUILDING SIZE

±13,356 SF



LAND SIZE

±16,206 SF / ±0.37 AC



YEAR BUILT

1986



ZONING

LAM2

PROPERTY TYPE

Industrial

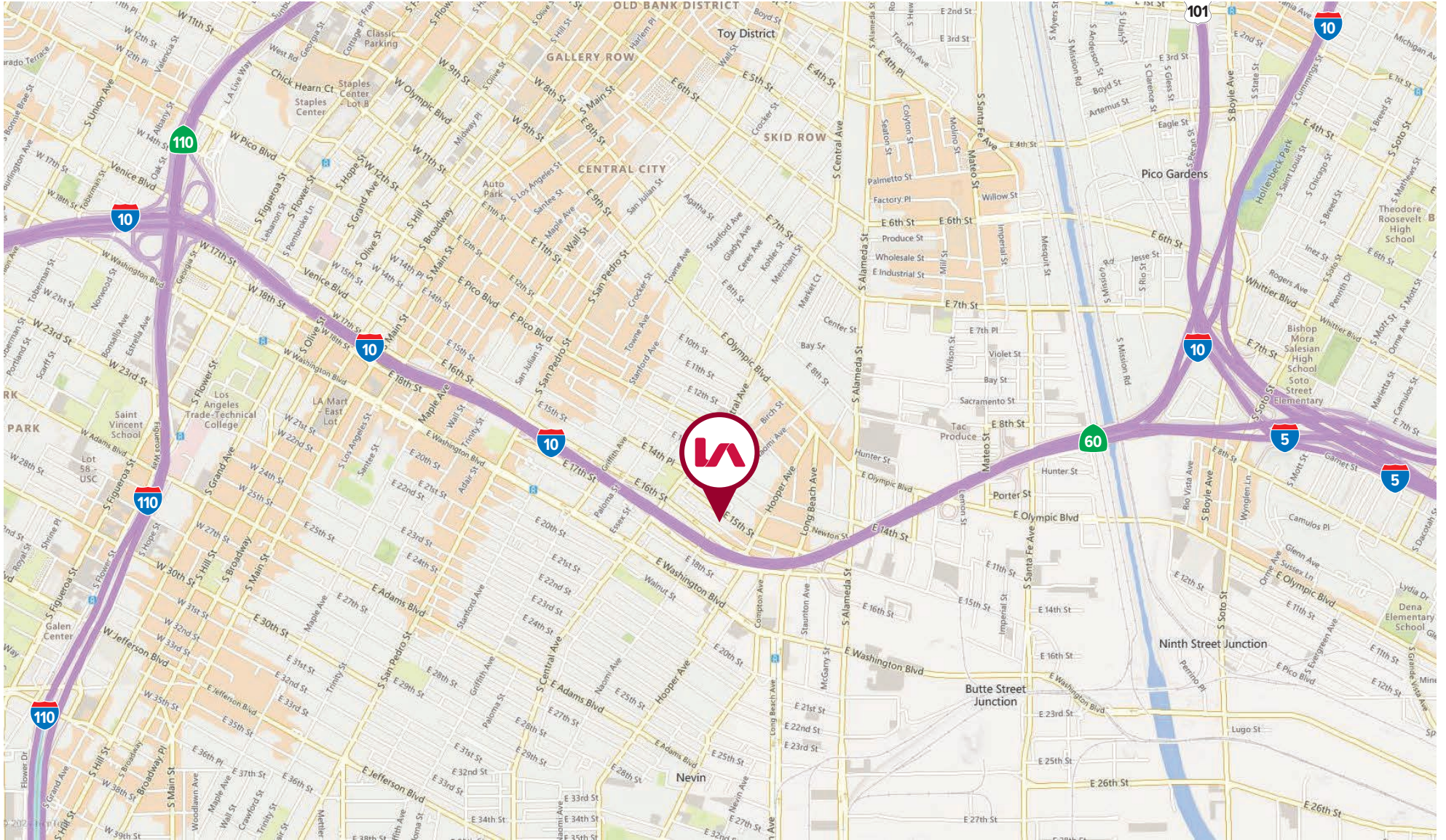


APN

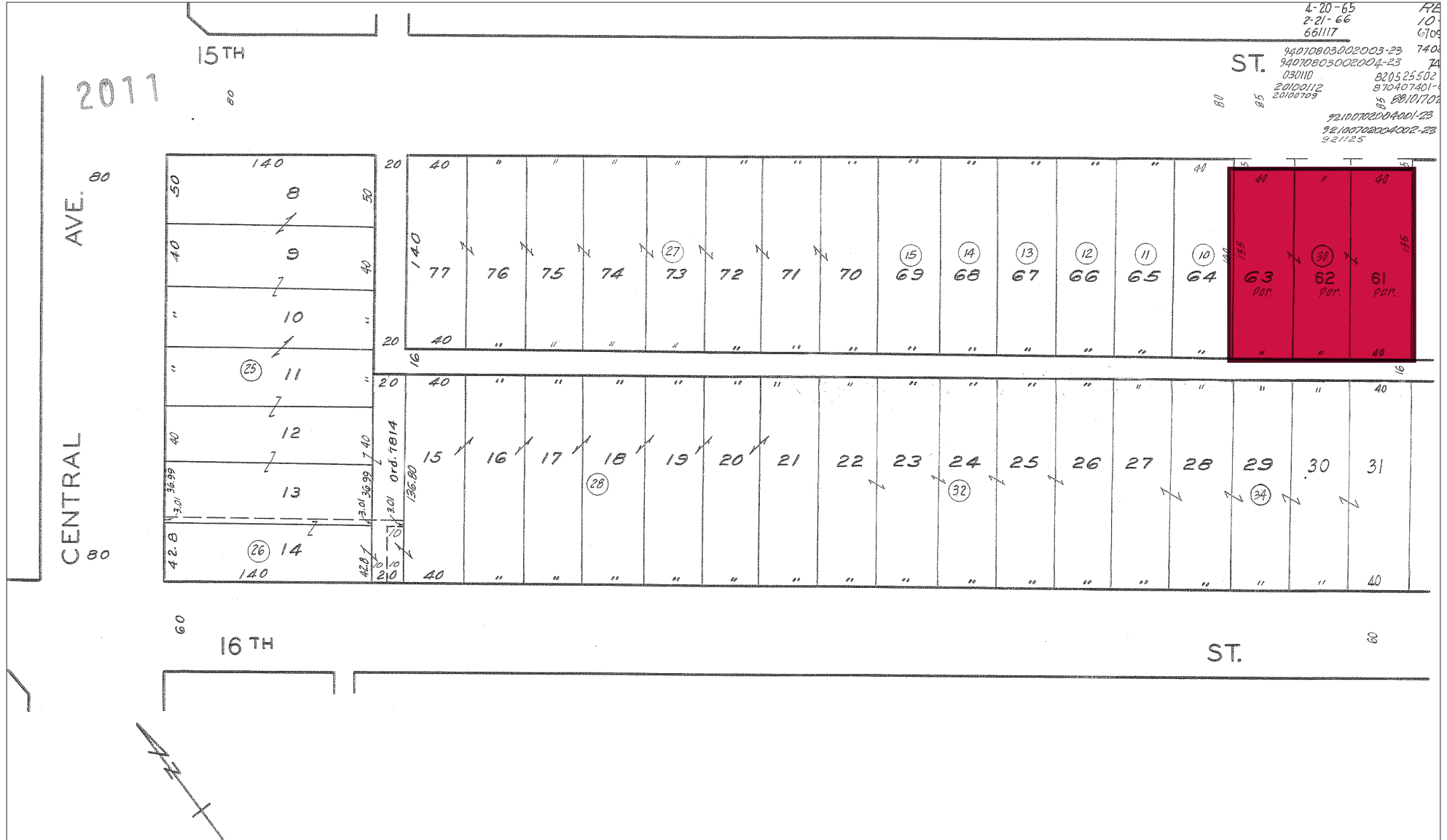
5130-014-030



PROPERTY LOCATION



PROPERTY PARCEL MAP



FOR SALE | ±13,356 SF INDUSTRIAL BUILDING

1372 E 15TH ST, LOS ANGELES, CA 90021

DOWNTOWN LOS ANGELES

2.09 MILES

BNSF RAILWAY HOBART YARD

2.99 MILES

LOS ANGELES INT'L AIRPORT

10.28 MILES

PORT OF LONG BEACH

19.67 MILES

PORT OF LOS ANGELES

20.36 MILES

FOR MORE INFORMATION, CONTACT ►

JEFFREY RINKOV

CEO | LIC NO 01238887

jrinkov@lee-associates.com

213.400.7941

SAM RINKOV

Senior Vice President | LIC NO 02132512

srinkov@lee-associates.com

818.324.4329

ETHAN RINKOV

LIC NO 02253349

erinkov@lee-associates.com

818.325.5175

Lee & Associates | Downtown Los Angeles

CORP ID 02174865

1201 N Main St

Los Angeles, CA 90012

The information has been furnished from sources which we deem reliable, but for which we assume no liability. Any projections, opinions, assumptions or estimates used are for example only and do not represent the current or future performance of the property. Buyers should consult with their independent advisors to determine if the property is suitable for their needs.