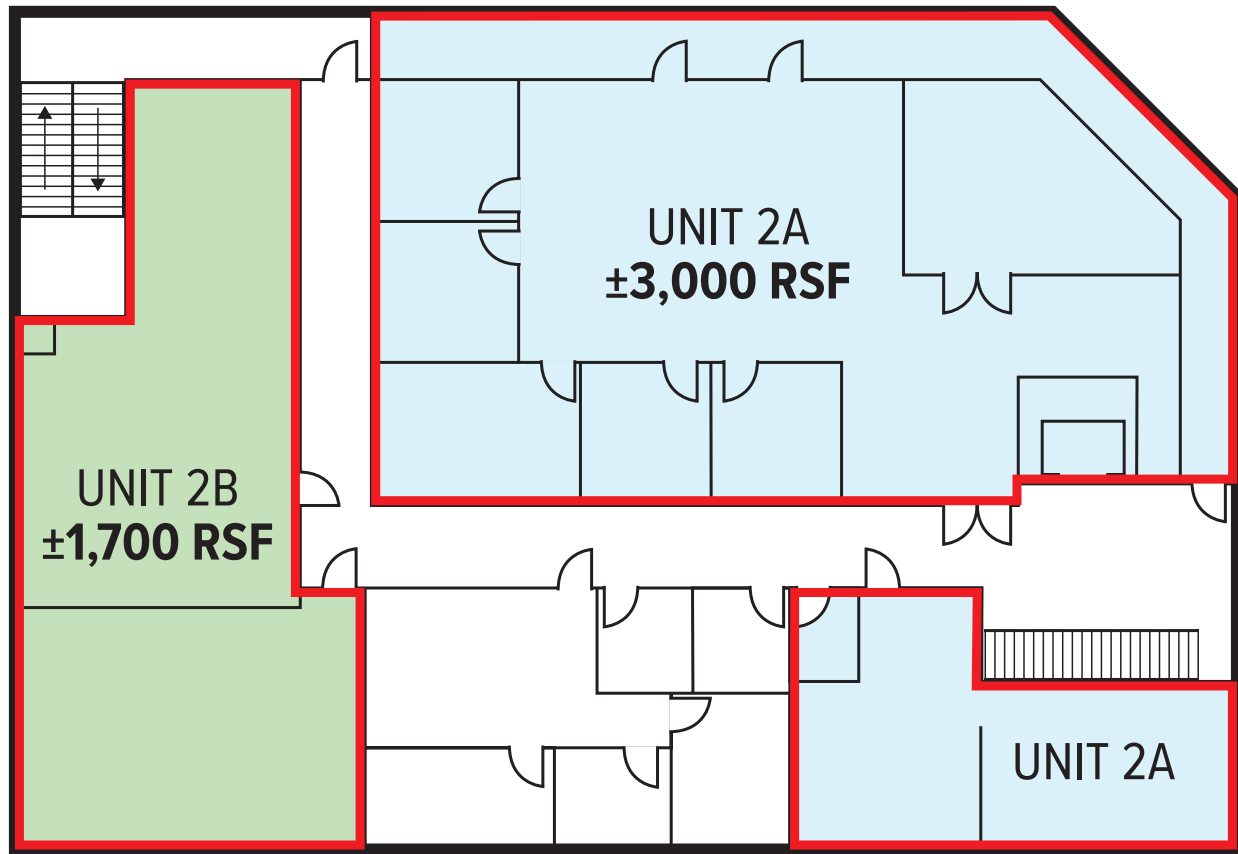


±4,700 RSF TURN KEY OFFICE SPACE AVAILABLE

990 N HILL ST | LOS ANGELES, CA 90012

2ND FLOOR PLAN

N HILL ST



BERNARD ST



NOTE: Drawing not to scale. All measurements and sizes are approximate. Lessee to Verify

FOR MORE INFORMATION, PLEASE CONTACT

EVAN JURGENSEN

Senior Vice President | LIC NO 01967347

e ejurgensen@lee-associates.com

o 323.922.3733