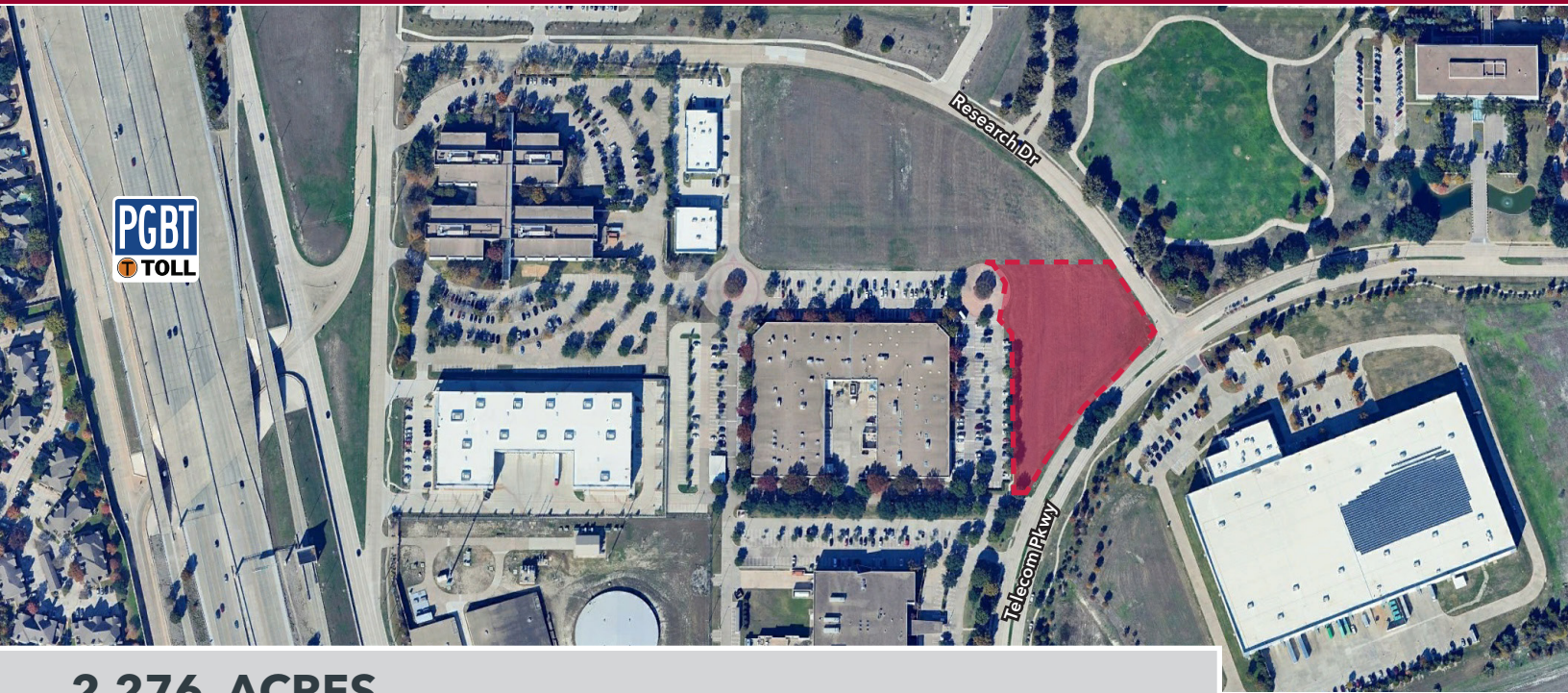


FOR SALE

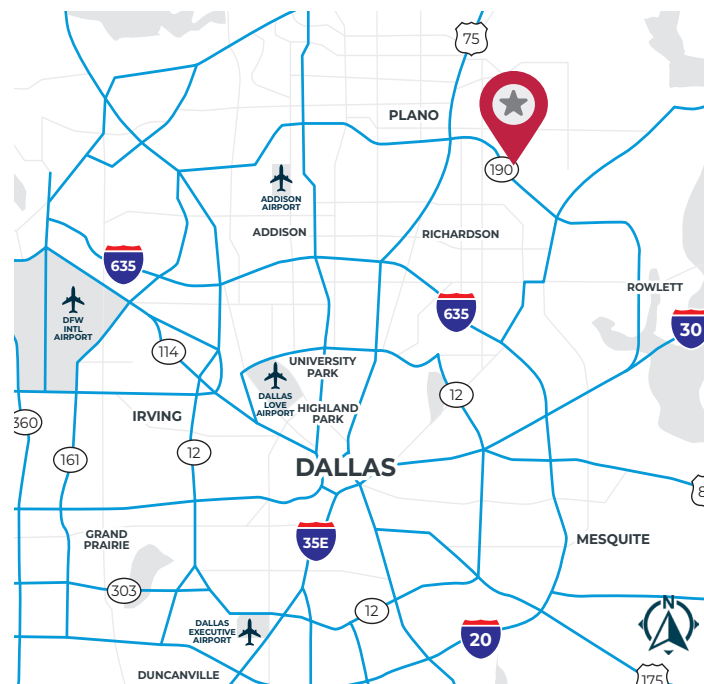
3300 Research Dr | Richardson, TX 75082



2.276 ACRES

LISTING HIGHLIGHTS

- ADDRESS:** 3300 Research, Richardson, TX
- LAND SIZE:** 2.276 Acres
- ZONING:** PD (Industrial/Light Manufacturing allowed)
- COMMENTS:**
- Utilities adjacent to site
 - Industrial, Light Manufacturing, office allowed
 - Excellent location, less than a mile from George Bush Turnpike (190)
 - Oncor substation at the end of the block
 - Restaurants, Hotels and other amenities nearby



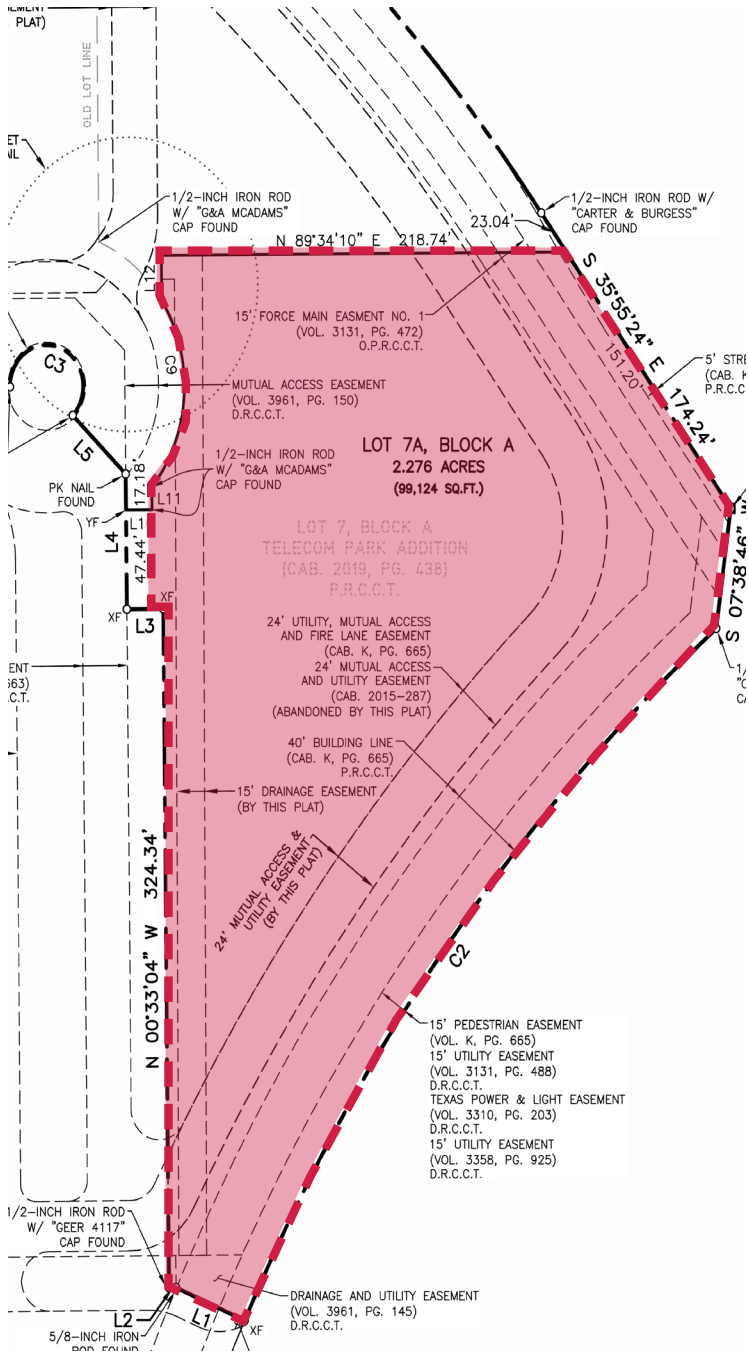
FOR MORE INFORMATION:

BRETT LEWIS, SIOR
972.934.4018
blewis@lee-associates.com

TAYLOR STELL
214.558.1969
tstell@lee-associates.com

GEORGE TANGHONGS, SIOR, CCIM
972.934.4008
george@lee-associates.com

LEE & ASSOCIATES
COMMERCIAL REAL ESTATE SERVICES
leadallas.com



All information furnished regarding property for sale, rental or financing is from sources deemed reliable, but no warranty or representation is made to the accuracy thereof and same is submitted to errors, omissions, change of price, rental or other conditions prior to sale, lease or financing or withdrawal without notice. No liability of any kind is to be imposed on the broker herein.

FOR MORE INFORMATION:

BRETT LEWIS, SIOR
972.934.4018
blewis@lee-associates.com

TAYLOR STELL
214.558.1969
tstell@lee-associates.com

GEORGE TANGHONGS, SIOR, CCIM
972.934.4008
george@lee-associates.com

