

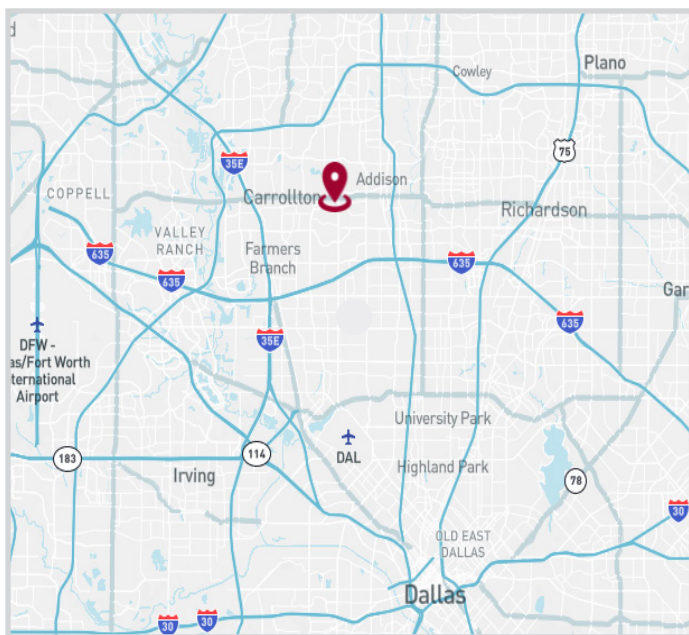
FOR SUBLEASE

±51,498 SF



MARSH BUSINESS PARK WEST

1100 Venture Court, Suite 100 | Carrollton, TX 75006



AVAILABILITY HIGHLIGHTS

- 51,498 SF Total Available Space
- Office Refurbished in 2022
- 100% HVAC
- Heavy Power
- 22' Clear
- Available October 1st, 2024
- Sublease through December 31st, 2030

FOR LEASING INFORMATION:

Johnny Anderson

janderson@lee-associates.com

512.897.6000

Reid Bassinger, SIOR

rbassinger@lee-associates.com

972.934.4013

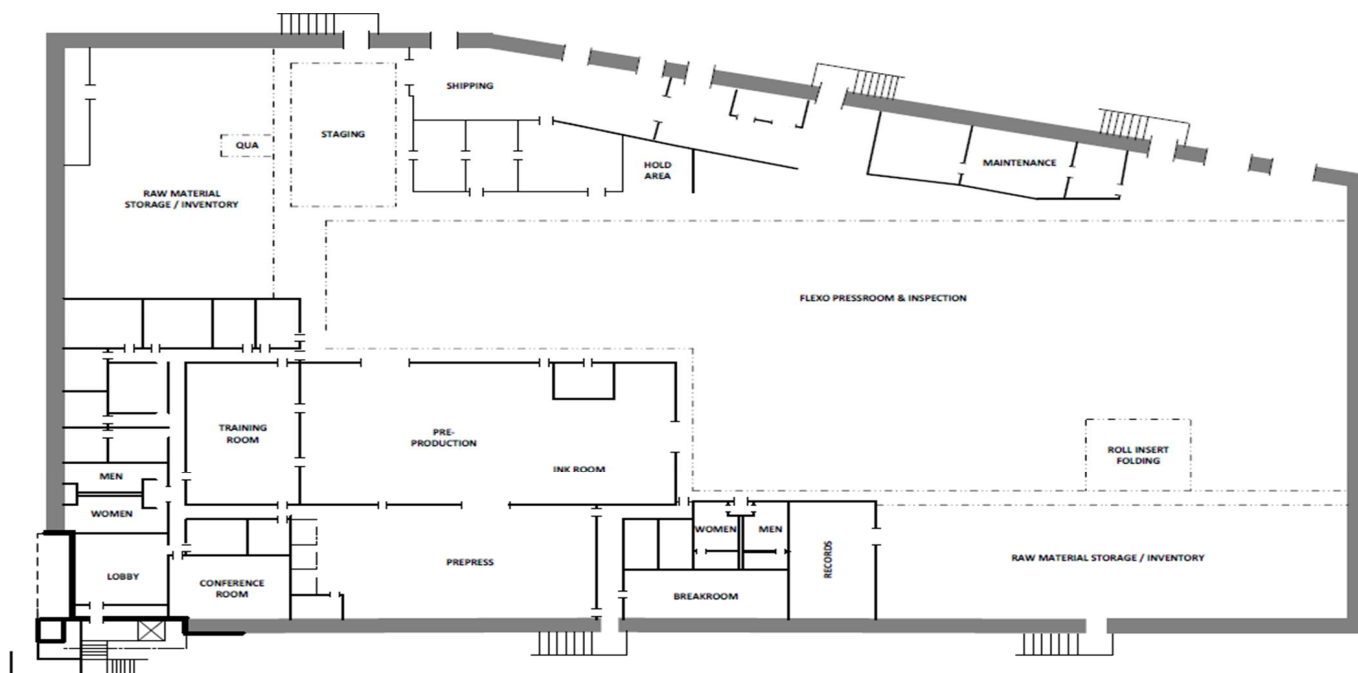
LEASING:

LEE & ASSOCIATES
COMMERCIAL REAL ESTATE SERVICES

±51,498 SF

FOR SUBLEASE

SITE PLAN



All information furnished regarding property for sale, rental or financing is from sources deemed reliable, but no warranty or representation is made to the accuracy thereof and same is submitted to errors, omissions, change of price, rental or other conditions prior to sale, lease or financing or withdrawal without notice. No liability of any kind is to be imposed on the broker herein.

FOR LEASING INFORMATION:

Johnny Anderson

janderson@lee-associates.com

512.897.6000

Reid Bassinger, SIOR

rbassinger@lee-associates.com

972.934.4013

LEASING:

LEE & ASSOCIATES
COMMERCIAL REAL ESTATE SERVICES