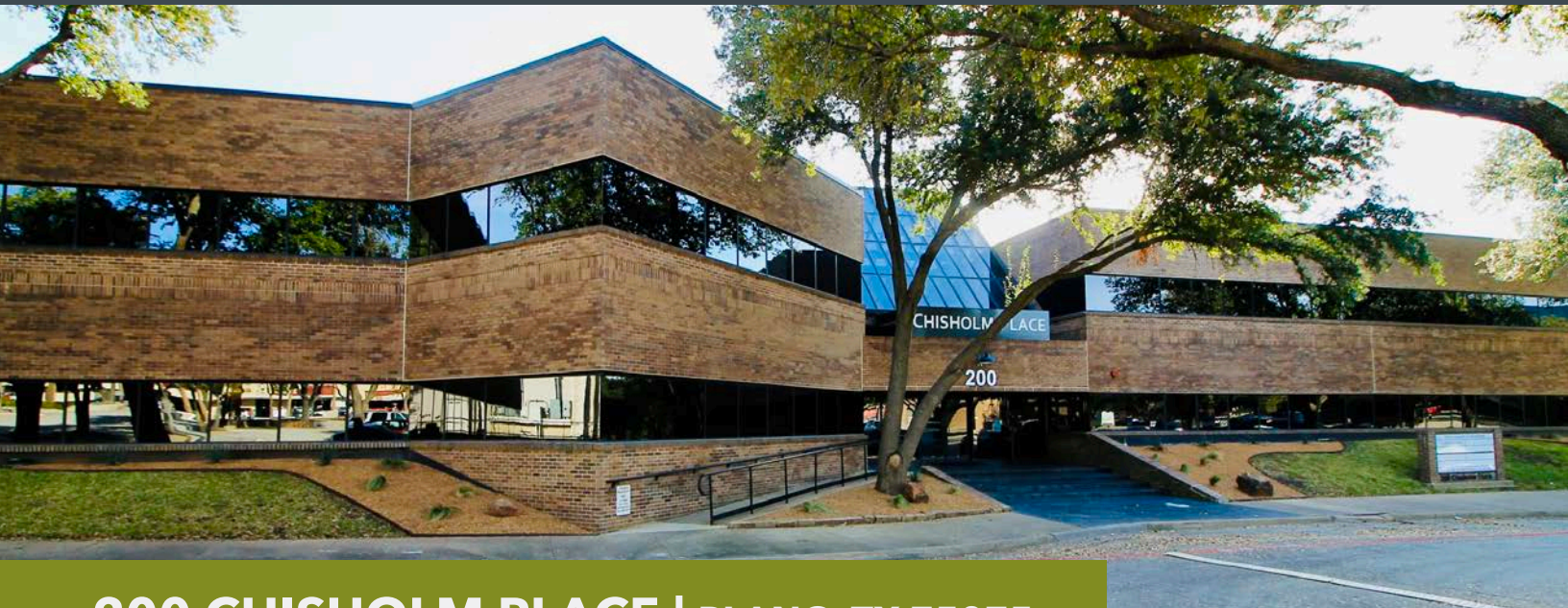


FOR LEASE

45,292 SF OFFICE BUILDING | PLANO, TEXAS



200 CHISHOLM PLACE | PLANO, TX 75075

SUITES AVAILABLE FROM 1,543 – 3,179 SF



AVAILABILITY HIGHLIGHTS

- Contemporary, Modern Design with High-End Finish Outs & Furnishings Throughout
- New Upgraded Lobby, Common Area & Break Room
- Fully Renovated 2020/2021
- Original Build 1985
- Oversized Stairs With Modern Floating Design & Iron Accents
- Secure, Key Card Access
- Expertly Maintained Courtyard With Creek View

FOR LEASING INFORMATION:

George Tanghongs SIOR, CCIM
george@lee-associates.com
D 972.934.4008
C 214.718.1817

Jessica Reinhardt
jreinhardt@lee-associates.com
D 972.934.4005
C 972.891.5236

CHISHOLM PLACE
200 Chisholm Place
Plano, TX 75075

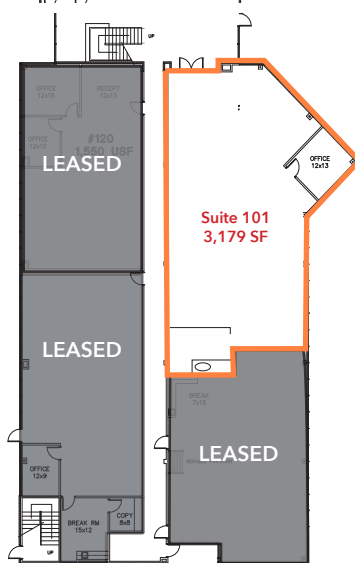
FOR LEASE

FLOOR PLANS & AVAILABILITIES

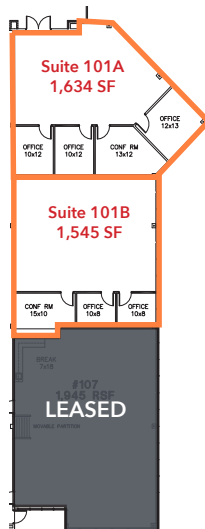
FIRST FLOOR



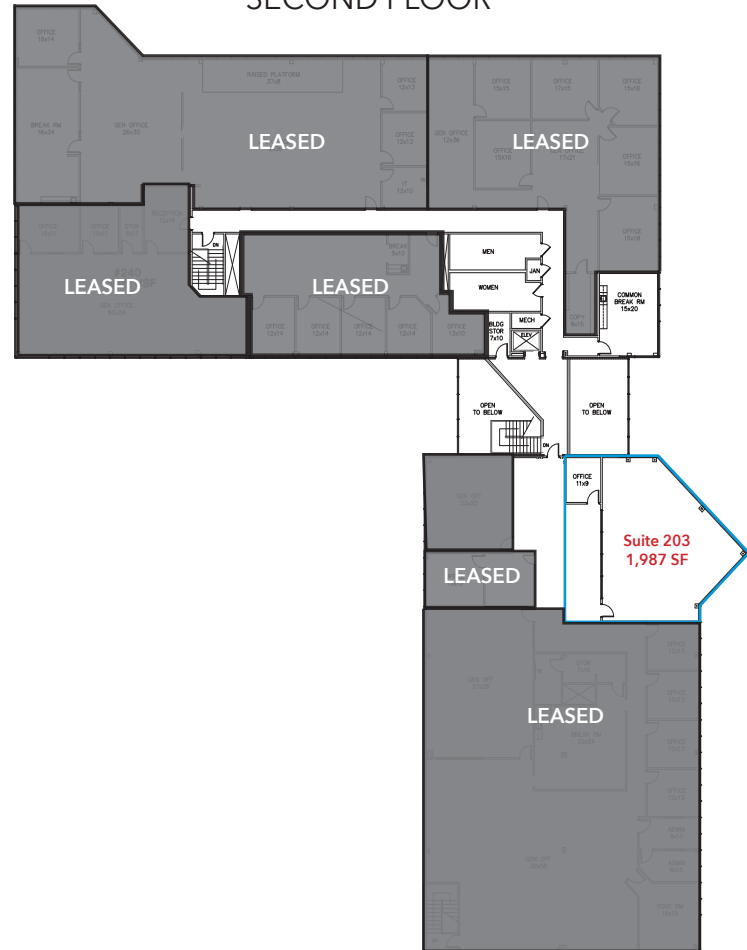
SUITE 101	3,179 SF
SUITE 101A	1,634 SF
SUITE 101B	1,545 SF
SUITE 130	1,543 SF
SUITE 203	1,987 SF



PROPOSED LAYOUT



SECOND FLOOR



FOR LEASING INFORMATION:

George Tanghongs SIOR, CCIM
 george@lee-associates.com
 D 972.934.4008
 C 214.718.1817

Jessica Reinhardt
 jreinhardt@lee-associates.com
 D 972.934.4005
 C 972.891.5236

CHISHOLM PLACE
 200 Chisholm Place
 Plano, TX 75075

FOR LEASE

COMMON AREA HIGHLIGHTS



FOR LEASING INFORMATION:

George Tanghongs SIOR, CCIM
george@lee-associates.com
D 972.934.4008
C 214.718.1817

Jessica Reinhardt
jreinhardt@lee-associates.com
D 972.934.4005
C 972.891.5236

CHISHOLM PLACE
200 Chisholm Place
Plano, TX 75075

