

FOR LEASE

11,000 SF | AVAILABLE



1210 W SCYENE, SUITE A | MESQUITE, TX 75149

PROPERTY HIGHLIGHTS

AVAILABLE

11,000 SF

SUITE A

11,000 SF

±1,100 SF reception/office
1 Grade level door (12'X14')

CLEAR HEIGHT

15'-17'

SPRINKLERED

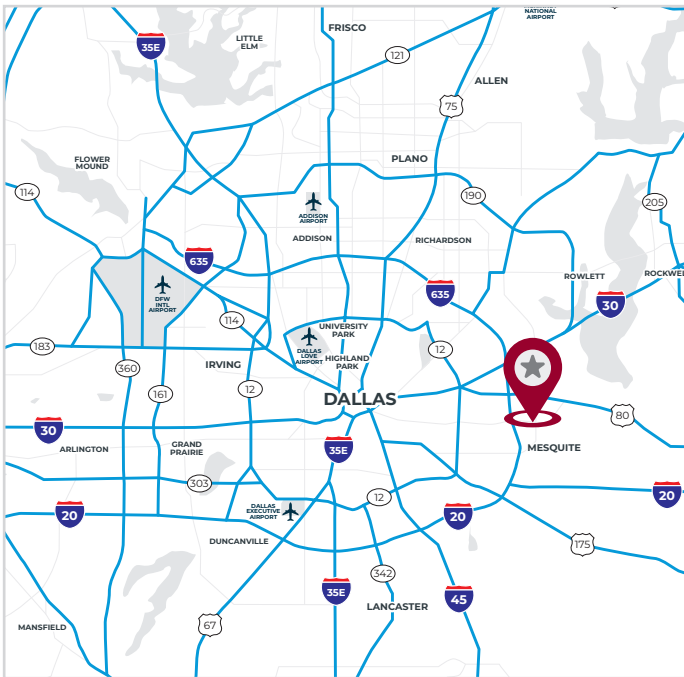
Yes

POWER

3 phase power / 200 amps

COMMENTS

- Recently painted exterior
- Ability to be 100% HVAC
- Very easy and close access to I-635
- Excess parking area adjacent to Suite B (end cap suite)
- New motivated ownership



FOR INFORMATION:

Taylor Stell

tstell@lee-associates.com
214.558.1969

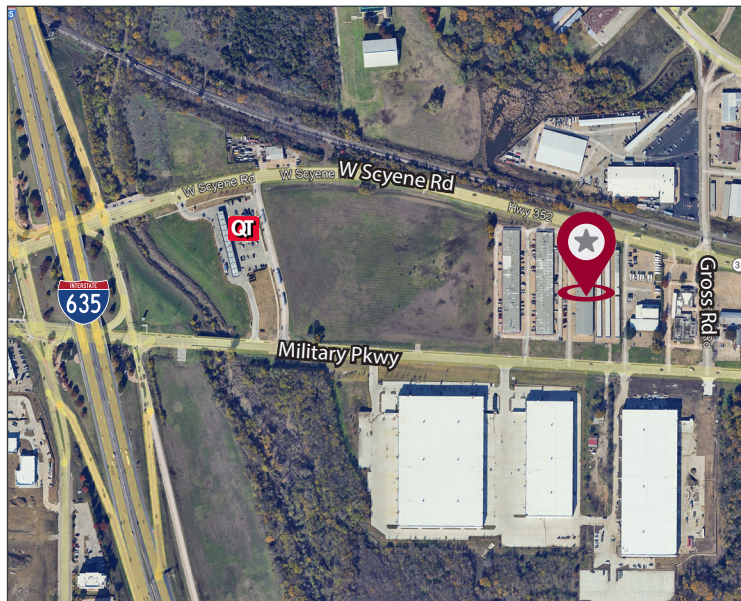
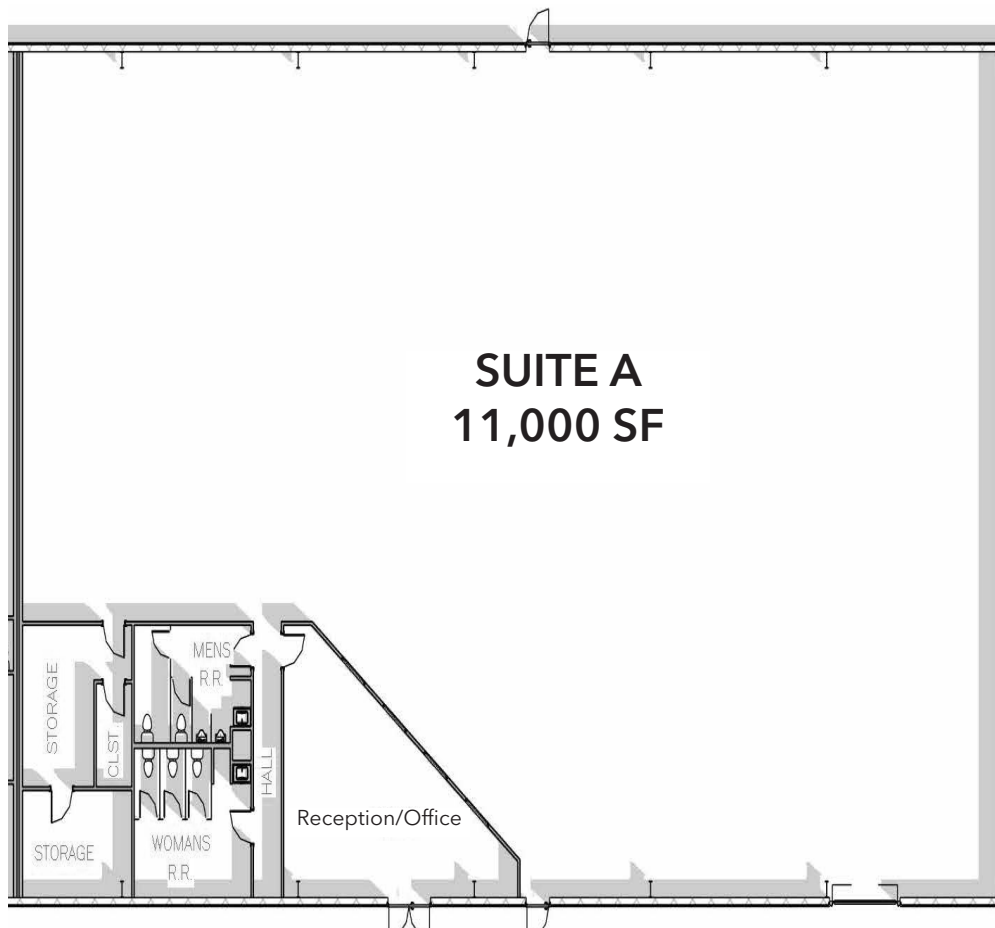
Brett Lewis, SIOR

blewis@lee-associates.com
972.934.4018

LEE & ASSOCIATES
COMMERCIAL REAL ESTATE SERVICES

11,000 SF | SUITE A

FOR LEASE



All information furnished regarding property for sale, rental or financing is from sources deemed reliable, but no warranty or representation is made to the accuracy thereof and same is submitted to errors, omissions, change of price, rental or other conditions prior to sale, lease or financing or withdrawal without notice. No liability of any kind is to be imposed on the broker herein.

FOR INFORMATION:

Taylor Stell

tstell@lee-associates.com

214.558.1969

Brett Lewis, SIOR

blewis@lee-associates.com

972.934.4018

LEE & ASSOCIATES
COMMERCIAL REAL ESTATE SERVICES