

# FOR LEASE

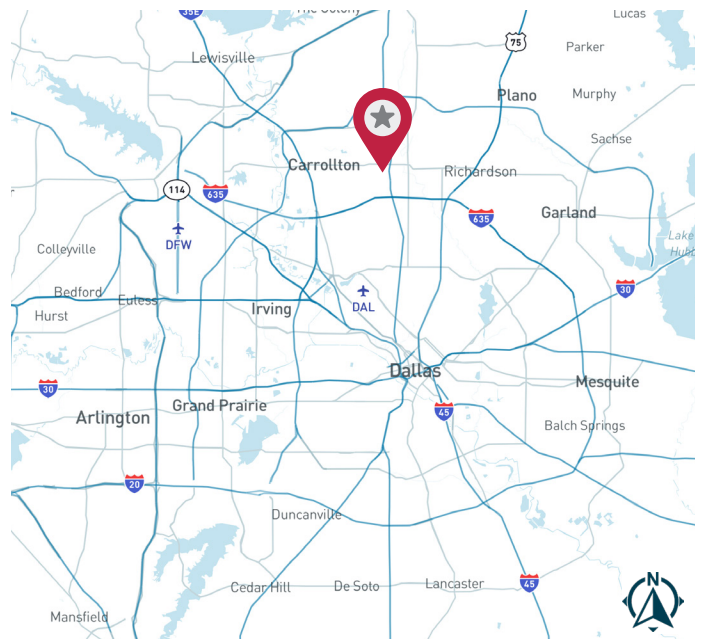
**3330 Earhart Drive, Suite 100 | Carrollton, TX 75006**



Midway Commerce Center  
**±1,568 - 64,911 SF**

## AVAILABILITY HIGHLIGHTS

- Built in 1984
- 14' Clear Height
- Rear loading with grade level and/or dock high doors, double personnel or roll up doors
- Near Addison Airport
- High end office showroom



FOR MORE INFORMATION:

**JESSICA REINHARDT**  
972.934.4005  
jreinhardt@lee-associates.com

**SUSAN CANCEMI**  
972.934.4005  
scancemi@lee-associates.com

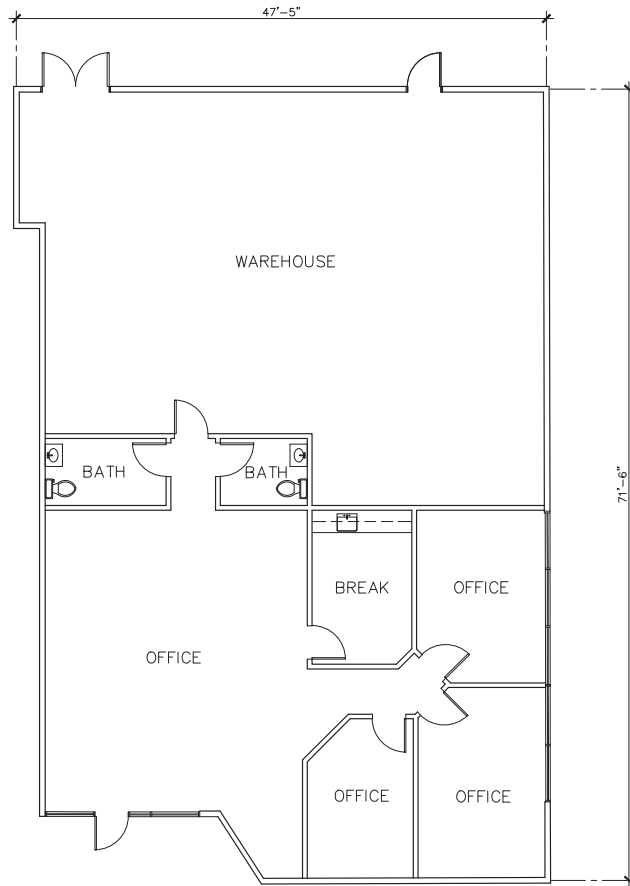
MANAGED BY:

**CIP** REAL ESTATE

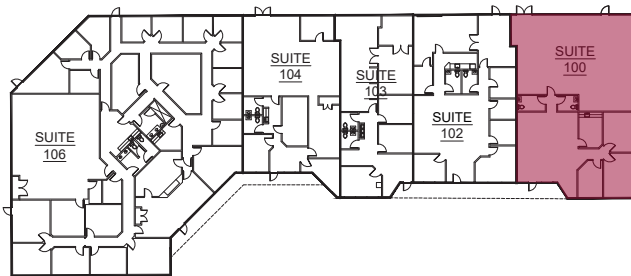
**LEE & ASSOCIATES**  
COMMERCIAL REAL ESTATE SERVICES  
[leedallas.com](http://leedallas.com)

## FLOOR PLAN

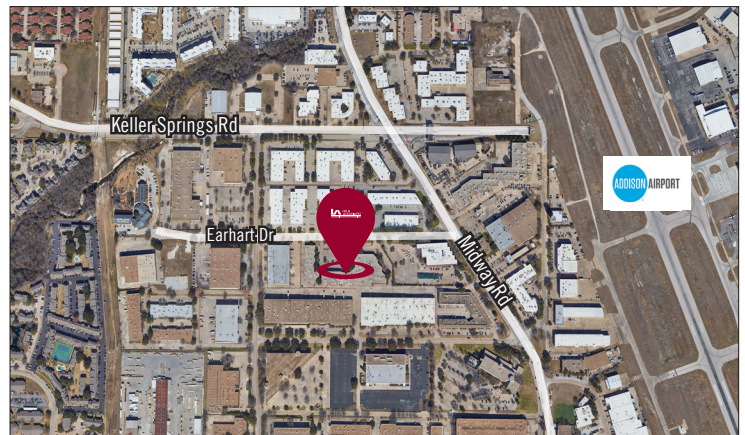
**STE 100**  
±3,034 SF



## SITE PLAN



## AERIAL



All information furnished regarding property for sale, rental or financing is from sources deemed reliable, but no warranty or representation is made to the accuracy thereof and same is submitted to errors, omissions, change of price, rental or other conditions prior to sale, lease or financing or withdrawal without notice. No liability of any kind is to be imposed on the broker herein.

FOR MORE INFORMATION:

**JESSICA REINHARDT**  
972.934.4005  
jreinhardt@lee-associates.com

**SUSAN CANCEMI**  
972.934.4005  
scancemi@lee-associates.com

MANAGED BY:

