

# FOR LEASE



## GROVE BUSINESS PARK

777-797 GROVE RD | RICHARDSON, TX 75081



### LISTING HIGHLIGHTS

|               |  |
|---------------|--|
| ADDRESS:      | 777-797 Grove Rd   |
| AVAILABLE SF: | 1,550 - 124,187 SF   |
| YEAR BUILT:   | 1983   |
| CLEAR HEIGHT: | 14'20"   |
| PARKING:      | 434 Concrete parking spaces  |
| NOTES:        | Rear loading with dock high, grade level or double personnel doors |

#### FOR LEASING INFORMATION:

**Jessica Reinhardt**  
jreinhardt@lee-associates.com  
972.934.4005  
972.891.5236

**Susan Cancemi**  
scancemi@lee-associates.com  
972.934.4005  
469.236.3386

#### OWNED BY:



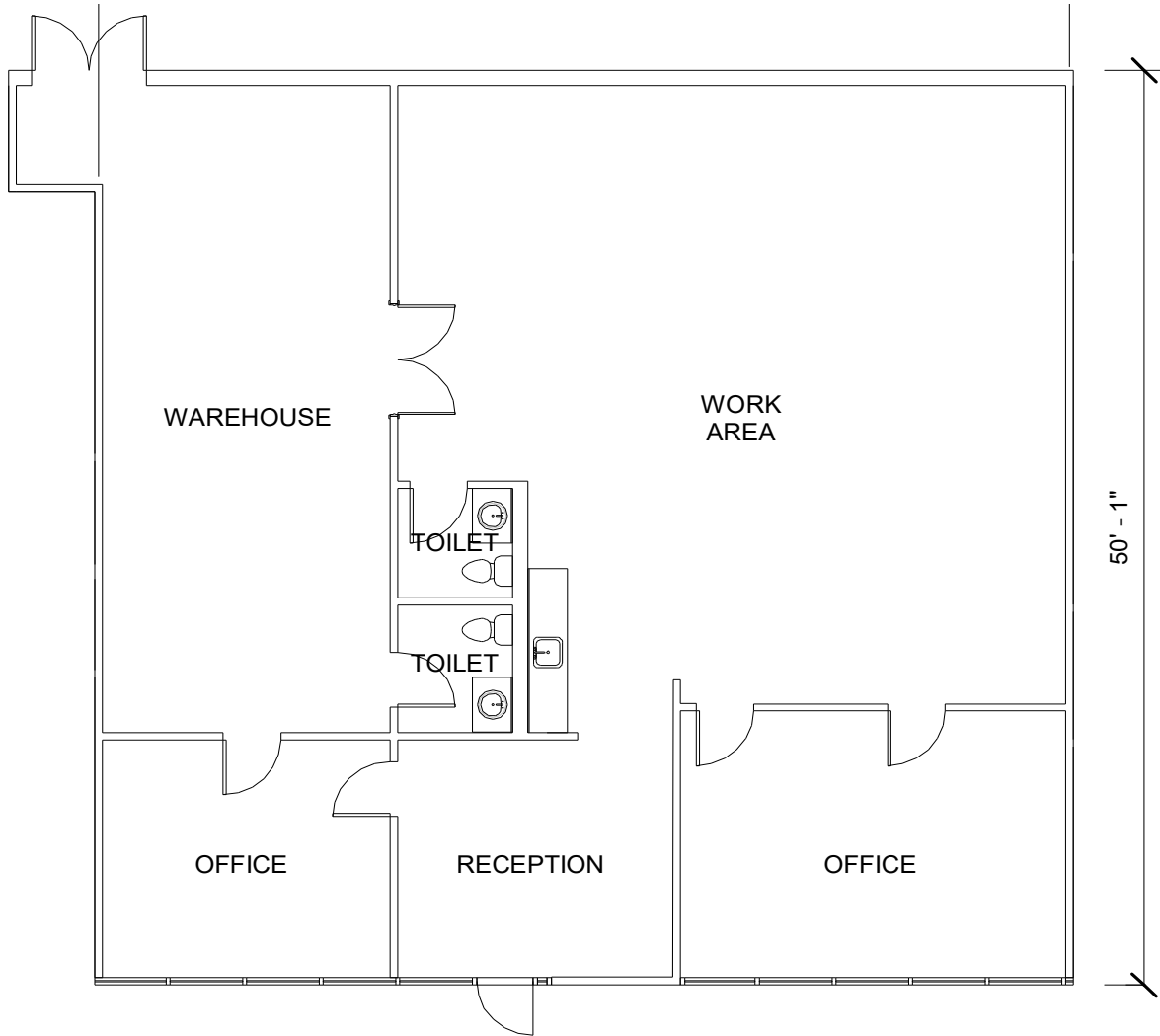
#### LEASED BY:



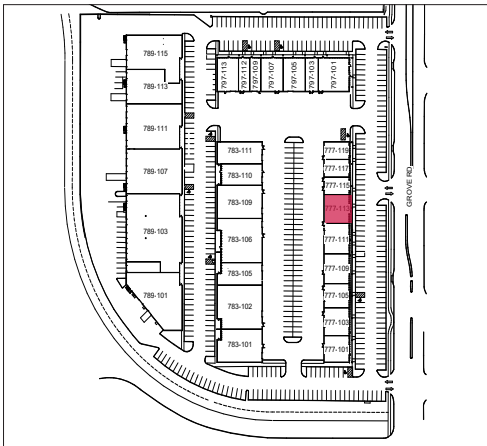
# 777 GROVE RD

# FOR LEASE

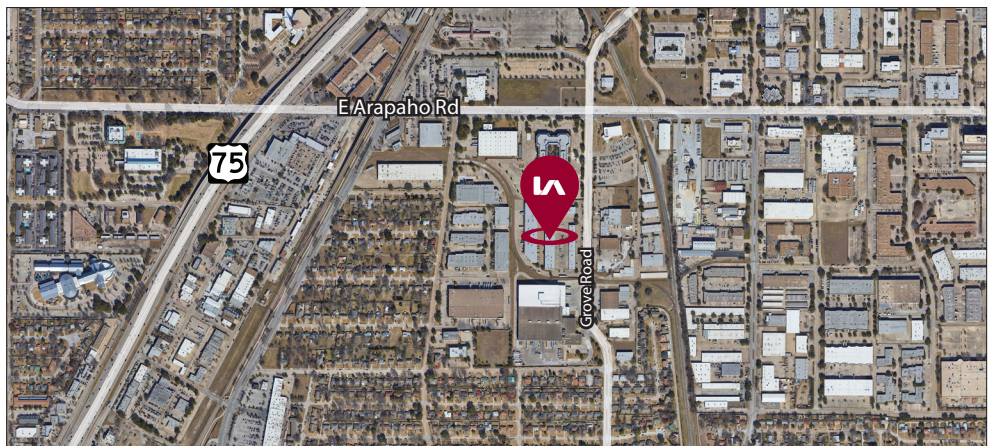
**STE 113**  
2,572 SF



**SITE PLAN**



**AERIAL**



All information furnished regarding property for sale, rental or financing is from sources deemed reliable, but no warranty or representation is made to the accuracy thereof and same is submitted to errors, omissions, change of price, rental or other conditions prior to sale, lease or financing or withdrawal without notice. No liability of any kind is to be imposed on the broker herein.

**Jessica Reinhardt**

jreinhardt@lee-associates.com

972.934.4005

972.891.5236

**Susan Cancemi**

scancemi@lee-associates.com

972.934.4005

469.236.3386

OWNED BY:



LEASED BY:

