

FOR SUBLEASE

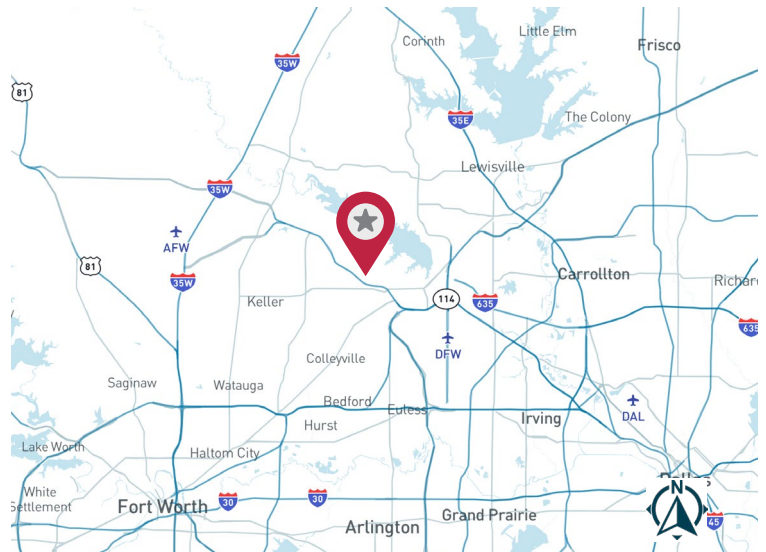
1220 N Kimball Ave, Suite 120 | Southlake, TX 76092



±2,824 SF

AVAILABILITY HIGHLIGHTS

- 2,824 SF Office Space
- Sublease through November 30, 2030
- Built-Out Medical/Physical Therapy Space
- New construction
- Located off Hwy 114 and near DFW Airport
- High-traffic visibility on Kimball Ave

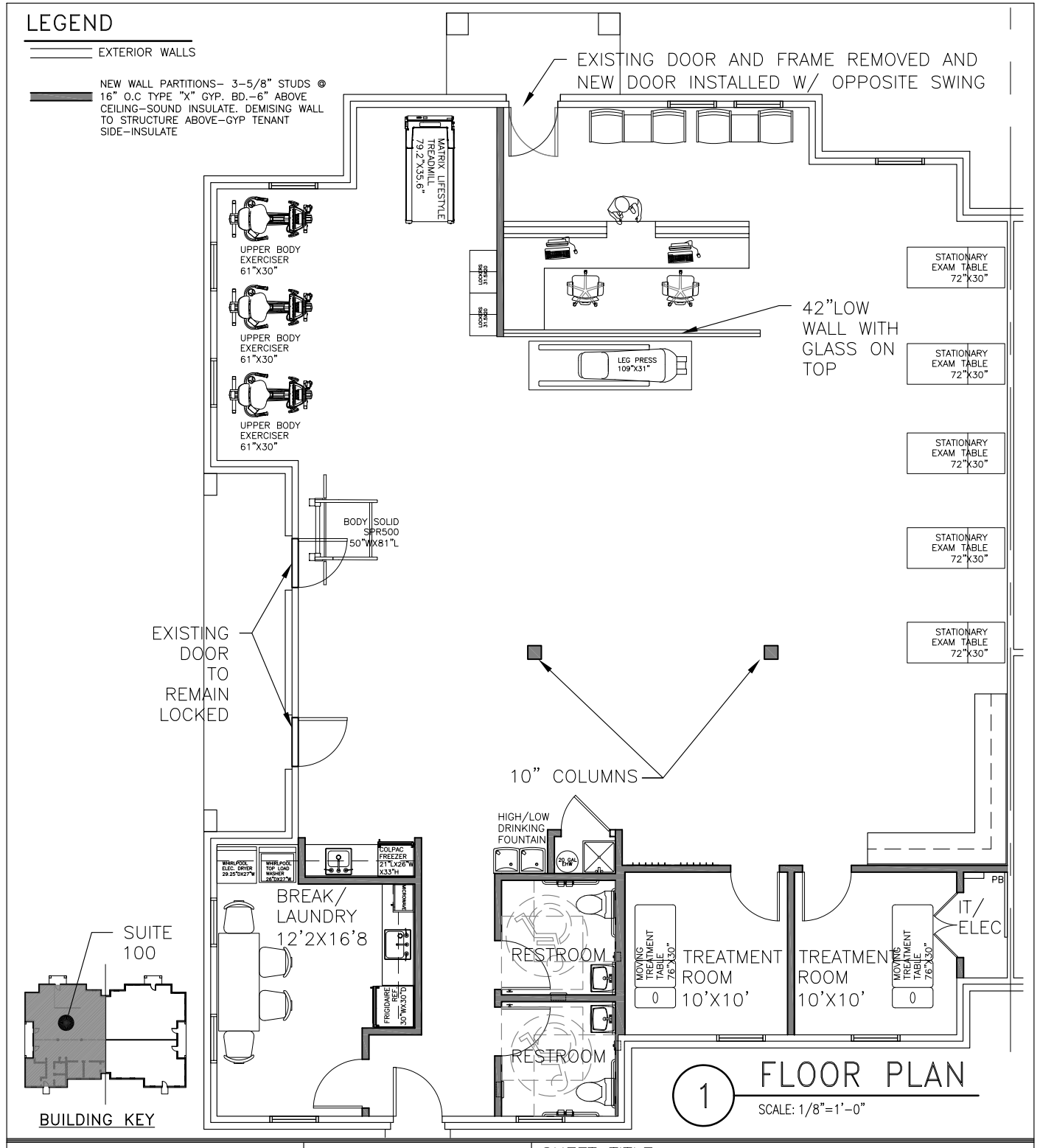


FOR MORE INFORMATION:

Lauren Konen
832.515.4062
lkonen@lee-associates.com

LEE & ASSOCIATES
COMMERCIAL REAL ESTATE SERVICES
leadallas.com

FLOOR PLAN



All information furnished regarding property for sale, rental or financing is from sources deemed reliable, but no warranty or representation is made to the accuracy thereof and same is submitted to errors, omissions, change of price, rental or other conditions prior to sale, lease or financing or withdrawal without notice. No liability of any kind is to be imposed on the broker herein.

FOR MORE INFORMATION:

Lauren Konen

832.515.4062

lkonen@lee-associates.com

LEE & ASSOCIATES
COMMERCIAL REAL ESTATE SERVICES
leedallas.com

FOR SUBLEASE

PROPERTY IMAGES



All information furnished regarding property for sale, rental or financing is from sources deemed reliable, but no warranty or representation is made to the accuracy thereof and same is submitted to errors, omissions, change of price, rental or other conditions prior to sale, lease or financing or withdrawal without notice. No liability of any kind is to be imposed on the broker herein.

FOR MORE INFORMATION:

Lauren Konen
832.515.4062
lkonen@lee-associates.com

LEE & ASSOCIATES
COMMERCIAL REAL ESTATE SERVICES
leedallas.com