

FOR LEASE

BUILDING D
TOTALING 115,208 SF

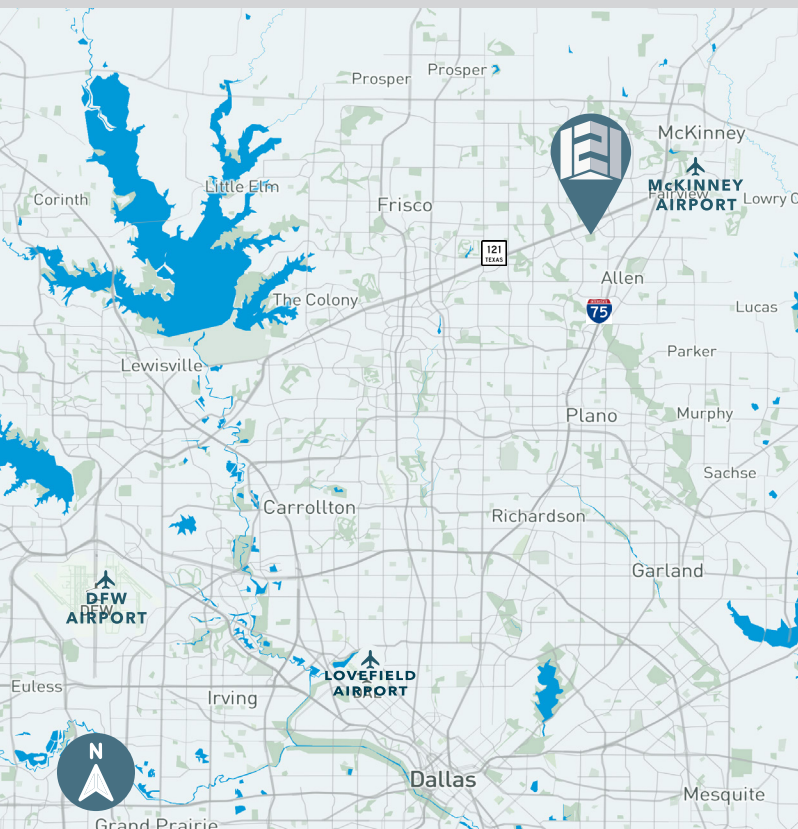


TECHNOLOGY PARK



121 TECHNOLOGY PARK

859 STATE HWY 121 | ALLEN, TX 75013



PROJECT HIGHLIGHTS

- 69,942 SF Total Available
- Building Power - 2500 Amps | 3 Phase
- Building Depth - 230'
- High Image Modern Design
- Build to Suit Office Layouts
- ESFR Sprinkler System
- Full Vapor Barrier
- 75 Total Car Parks
- 26 Dock High Doors
- 32' Clear Height
- Typical Column Spacing - 54' W x 50' D
- 210' Shared Truck Court
- Project Fronts Highway 121 (82,000 Vehicles per day)

FOR LEASING INFORMATION:

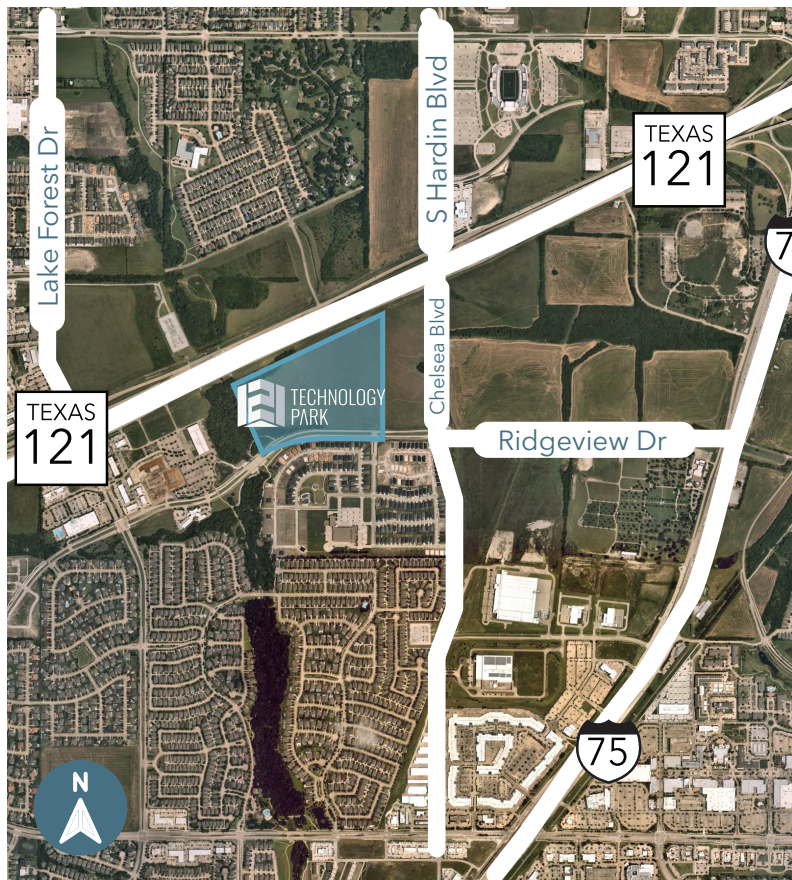
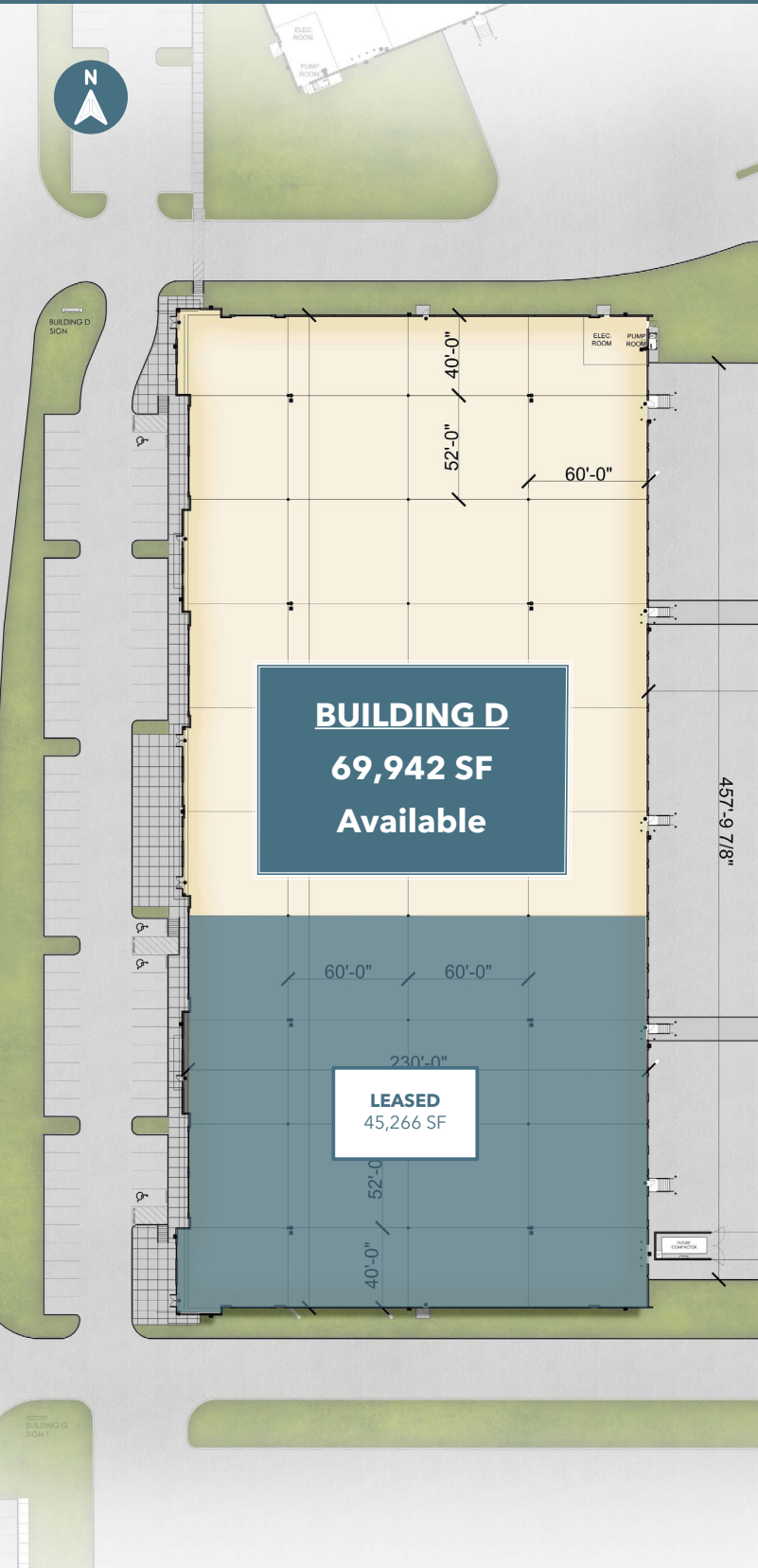


Ken Wesson, SIOR, CCIM
kwesson@lee-associates.com
C: 469-855-5222

DEVELOPED BY:



SITE PLAN



FOR LEASING INFORMATION:

LEE & ASSOCIATES
COMMERCIAL REAL ESTATE SERVICES

Ken Wesson, SIOR, CCIM
kwesson@lee-associates.com
C: 469-855-5222

DEVELOPED BY:

SW **STILLWATER CAPITAL**