

1202-1210 Avenue S

Grand Prairie, TX 75050

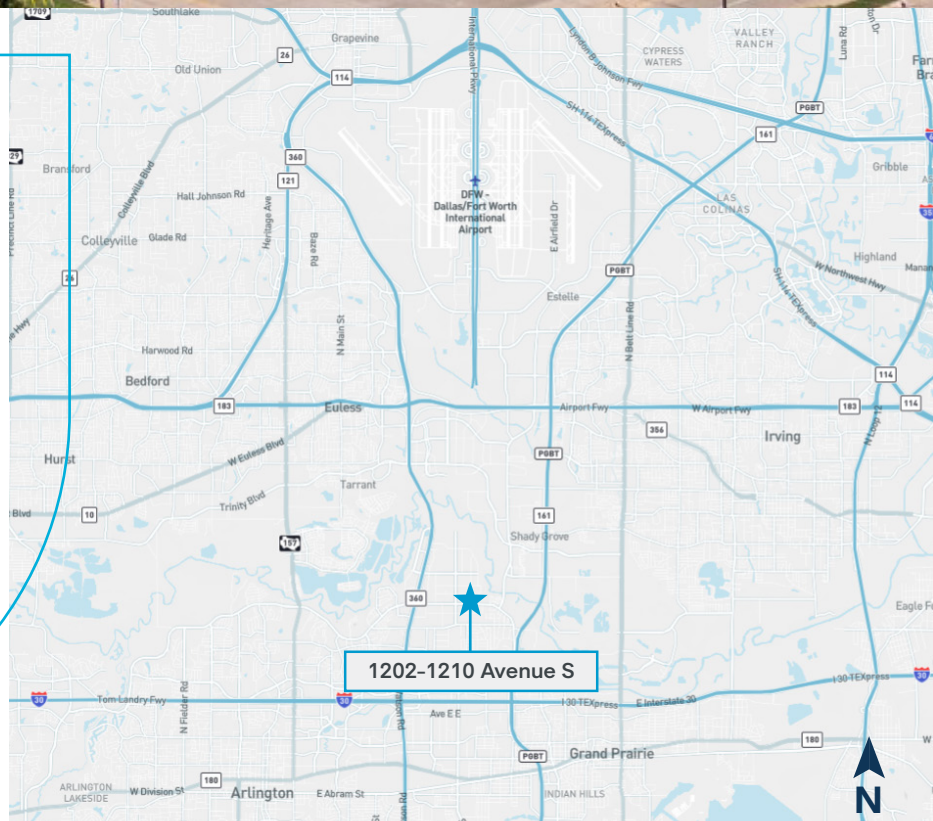
Brookfield
Properties

±40,069-
80,185 SF
Industrial Space
for Lease



Facility Highlights

- Available SF: ±40,069-80,185 SF
- Office Space: ±8,024 Total SF
- Clear Height: 23'
- 17 Dock Doors
- 1 Door with Ramp
- Sprinklered
- Centrally located in the heart of the Dallas/Fort Worth metroplex (GSW Submarket)
- Easy access to DFW International Airport



Leasing Contacts

Mark Graybill, SIOR, CCIM
214.914.5537
mgraybill@lee-associates.com

Reed A. Parker, SIOR
214.558.5558
rparker@lee-associates.com

RJ Flores
310.968.9362
rjflores@lee-associates.com

LEE & ASSOCIATES
COMMERCIAL REAL ESTATE SERVICES

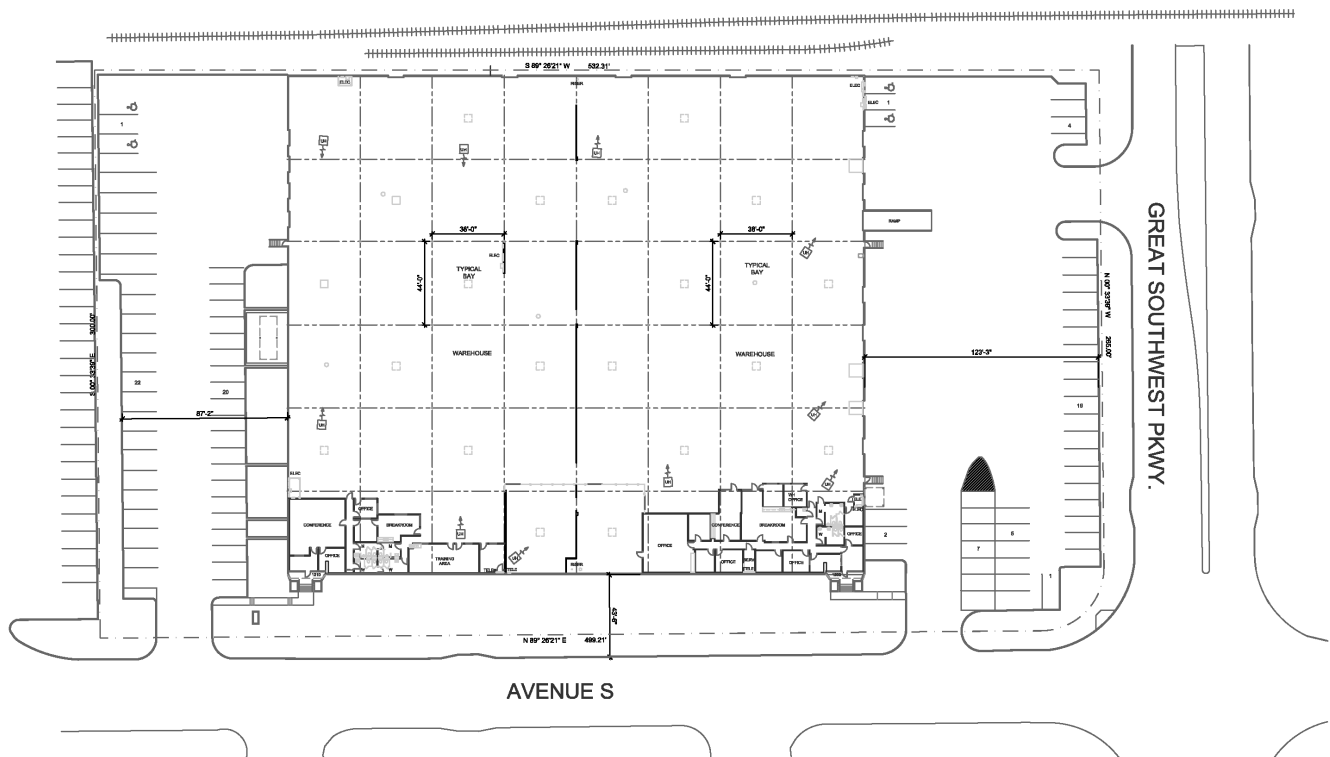
1202-1210 Avenue S, Grand Prairie, TX 75050

±40,069-80,185 SF Industrial Space for Lease

**Brookfield
Properties**



Site Plan



Office Space	East Office ±3,378 SF West Office ±4,646 SF	Truck Court	123' Truck Court (West) 87' Truck Court (East)
Power	480V/3-Phase	Column Spacing	44' x 38'
Roof	2017 TPO	Other Notes:	Warehouse LEDs Professional Landscaping

Leasing Contacts

Mark Graybill, SIOR, CCIM
214.914.5537
mgraybill@lee-associates.com

Reed A. Parker, SIOR
214.558.5558
rparker@lee-associates.com

RJ Flores
310.968.9362
rjflores@lee-associates.com

LEE & ASSOCIATES
COMMERCIAL REAL ESTATE SERVICES