

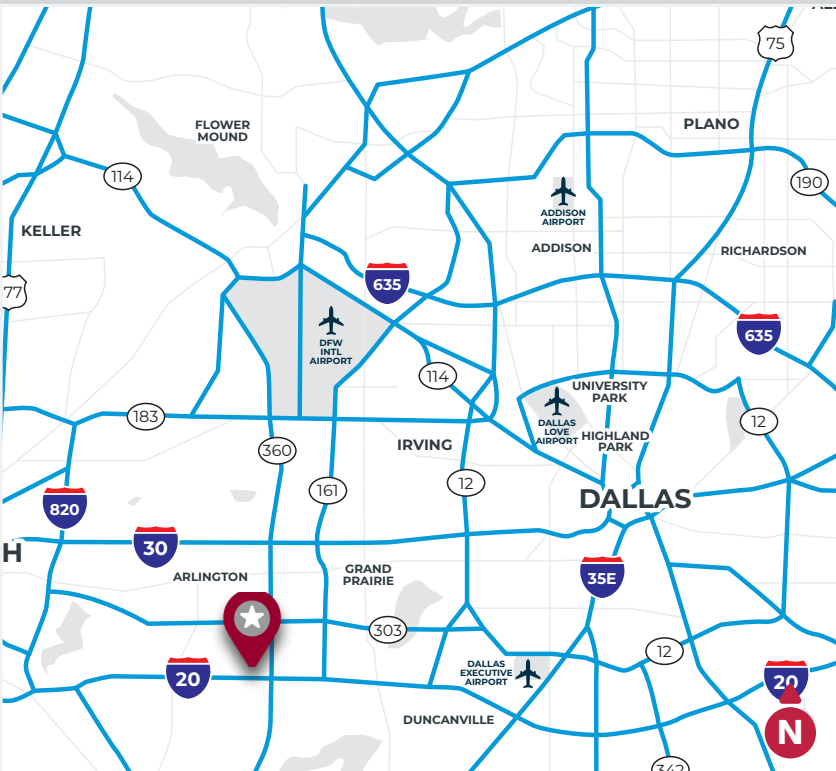
# FOR LEASE

±38,078 SF | DISTRIBUTION AND MANUFACTURING



## ARLINGTON TECH CENTRE

2000 E Arbrook Blvd, Suite 100  
Arlington, TX 76014



## AVAILABILITY HIGHLIGHTS

- ±38,078 SF Available | End-Cap Location
- ±2,611 SF of Main Office
- 10 Dock High Doors
- One (1) Oversized 12'x14' Ramped Door
- 32' Clear Height
- ESFR Fire Suppression
- LED Warehouse Lighting
- Front Park / Rear Load
- Ideal for "will call" & supply house uses

### LEASING INFORMATION:

**Mark Graybill, SIOR, CCIM**  
214.914.5537  
mgraybill@lee-associates.com

**Reed Parker, SIOR**  
214.558.5558  
rparker@lee-associates.com

**RJ Flores**  
310.968.9362  
rjflores@lee-associates.com

### LEASED BY:

**LEE & ASSOCIATES**  
COMMERCIAL REAL ESTATE SERVICES

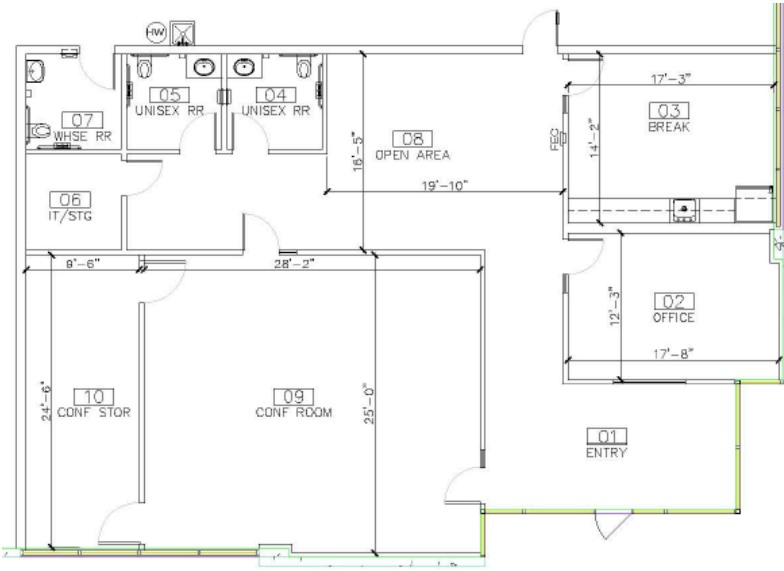
### OWNED BY:

**EASTGROUP**  
PROPERTIES

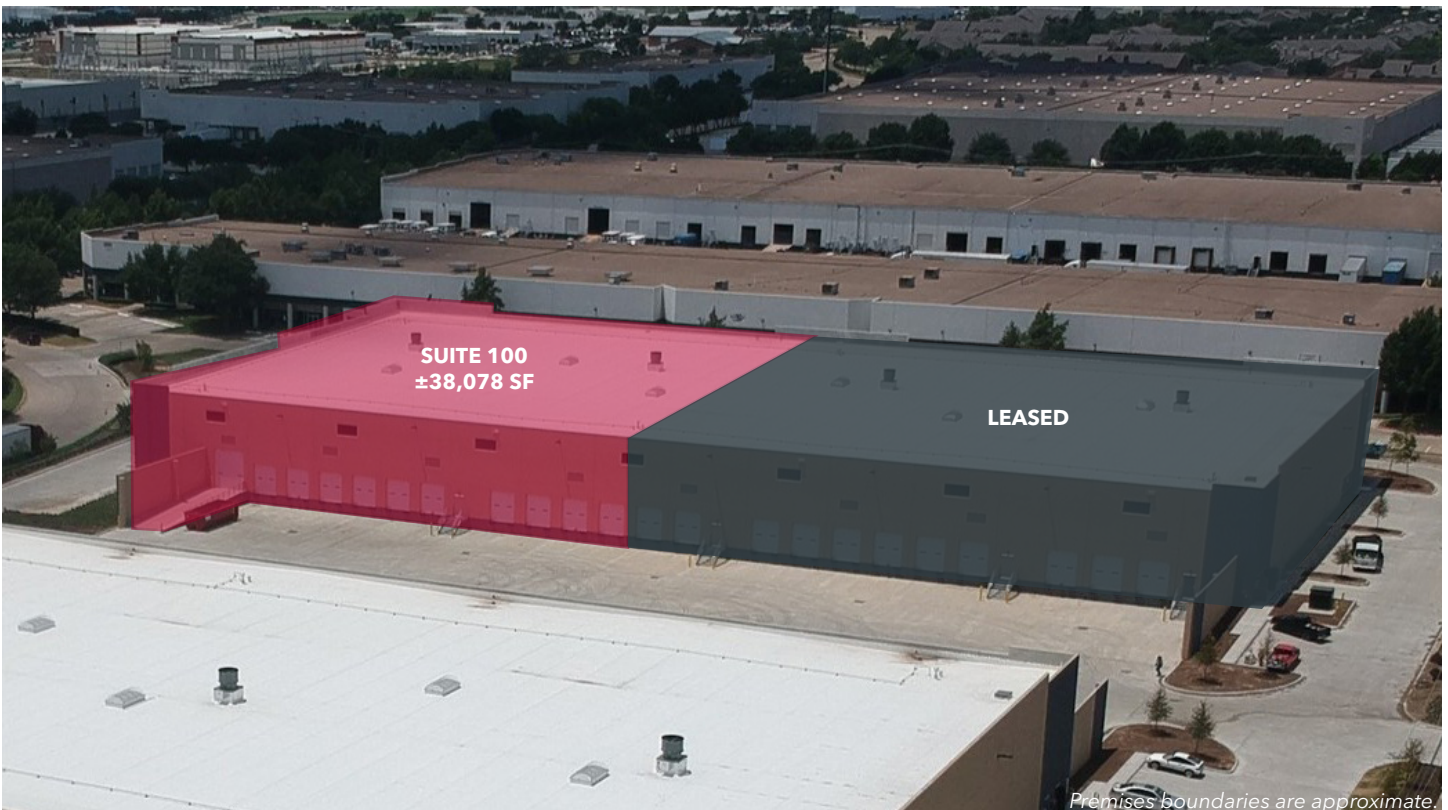
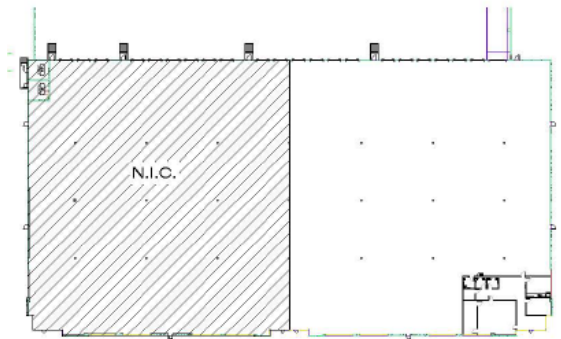
±38,078 SF | SUITE 100

FOR LEASE

OFFICE



SITE PLAN



Premises boundaries are approximate.

LEASING INFORMATION:

**Mark Graybill, SIOR, CCIM**  
214.914.5537  
mgraybill@lee-associates.com

**Reed Parker, SIOR**  
214.558.5558  
rparker@lee-associates.com

**RJ Flores**  
310.968.9362  
rjflores@lee-associates.com

LEASED BY:

**LEE & ASSOCIATES**  
COMMERCIAL REAL ESTATE SERVICES

OWNED BY:

**EASTGROUP**  
PROPERTIES