

FOR LEASE

11140 Petal Street, Suite 500 | Dallas, TX 75238



Northeast Dallas Business Park
±5,250 SF

AVAILABILITY HIGHLIGHTS

- ±5,250 SF Available Space
- Built in 1983
- 16'-18' Clear Height
- 1 Dock High Loading Door; 1 Ramped Loading Door
- 4 Building Project
- Distinctive landscaping and extensive lighting
- Easy access to I-635



FOR MORE INFORMATION:

JESSICA REINHARDT
972.934.4005
jreinhardt@lee-associates.com

SUSAN CANCEMI
972.934.4005
scancemi@lee-associates.com

MANAGED BY:

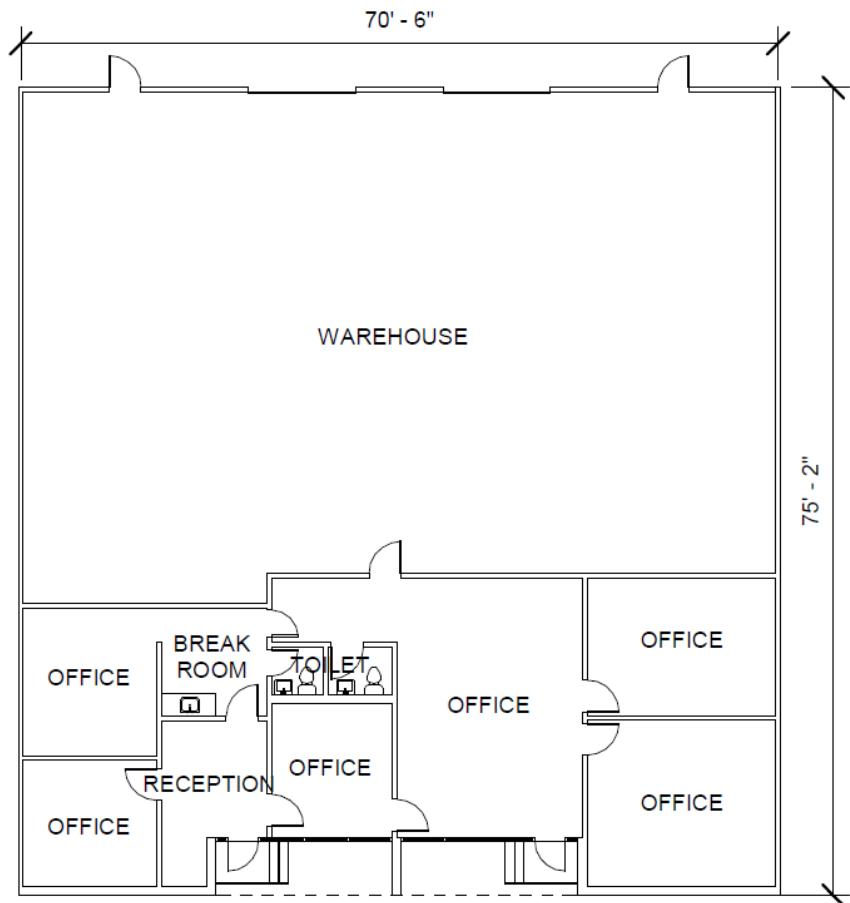


FOR LEASE

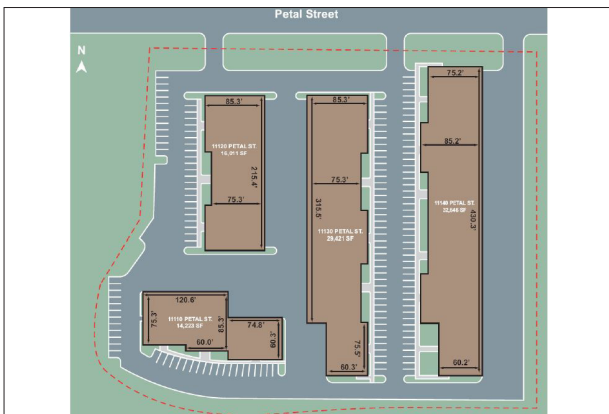
NORTHEAST DALLAS BUSINESS PARK

FLOOR PLAN

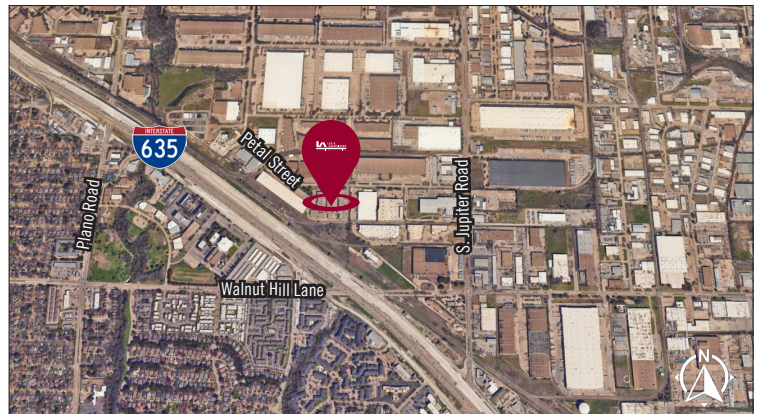
STE 500
± 5,250 SF



SITE PLAN



AERIAL



All information furnished regarding property for sale, rental or financing is from sources deemed reliable, but no warranty or representation is made to the accuracy thereof and same is submitted to errors, omissions, change of price, rental or other conditions prior to sale, lease or financing or withdrawal without notice. No liability of any kind is to be imposed on the broker herein.

FOR MORE INFORMATION:

JESSICA REINHARDT
972.934.4005
jreinhardt@lee-associates.com

SUSAN CANCEMI
972.934.4005
scancemi@lee-associates.com

MANAGED BY:

