

# FOR LEASE

## 777-797 Grove Road | Richardson, TX 75081



Grove Business Park  
**±1,550-124,187 SF**

### PROPERTY HIGHLIGHTS

- 4 Building Business Park
- ±1,550-124,187 SF
- Built in 1983
- Clear Height 14'-20'
- Parking Ratio 3.49/1,000
- Rear loading with dock high, grade level or double personnel doors



FOR MORE INFORMATION:

**JESSICA REINHARDT**  
972.934.4005  
jreinhardt@lee-associates.com

**SUSAN CANCEMI**  
972.934.4005  
scancemi@lee-associates.com

MANAGED BY:

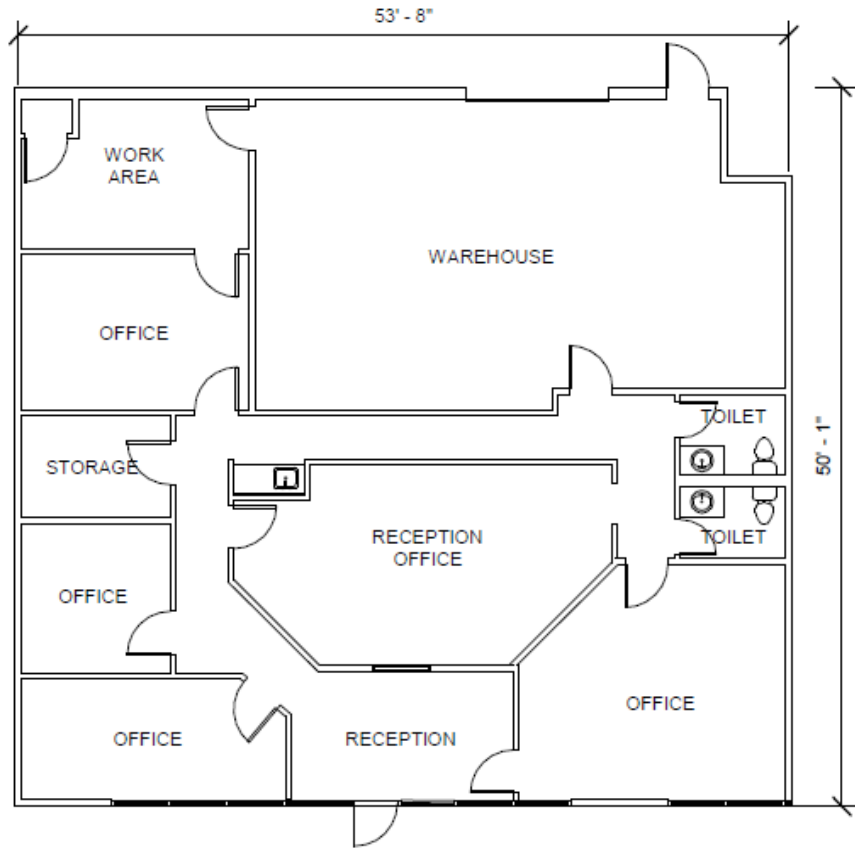


## AVAILABILITY HIGHLIGHTS

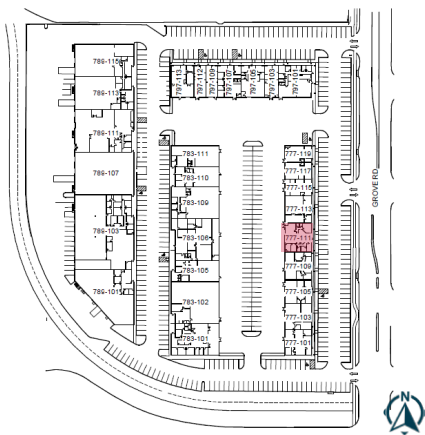
### 777 GROVE RD | SUITE 111

- ±2,650 SF
- Mix of office, work area, and warehouse space
- 2 Restrooms
- 14' Clear Height
- Rear loading with 1 Grade Level Door

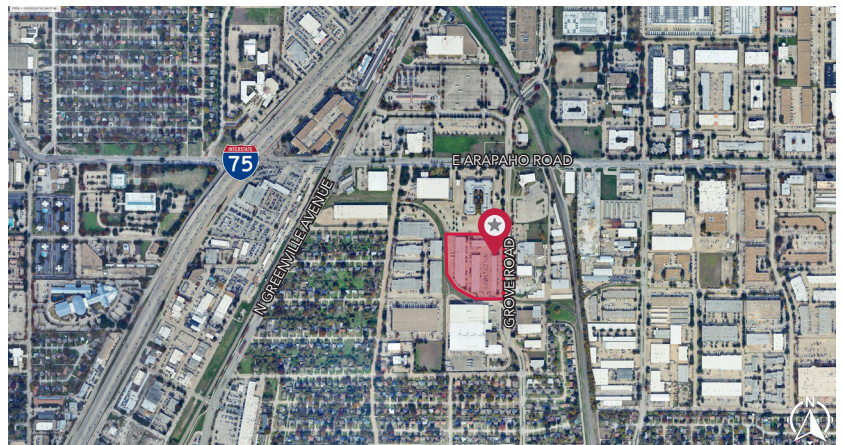
### FLOOR PLAN



### SITE PLAN



### AERIAL



All information furnished regarding property for sale, rental or financing is from sources deemed reliable, but no warranty or representation is made to the accuracy thereof and same is submitted to errors, omissions, change of price, rental or other conditions prior to sale, lease or financing or withdrawal without notice. No liability of any kind is to be imposed on the broker herein.

FOR MORE INFORMATION:

**JESSICA REINHARDT**  
972.934.4005  
jreinhardt@lee-associates.com

**SUSAN CANCEMI**  
972.934.4005  
scancemi@lee-associates.com

MANAGED BY:

