

# FOR LEASE



## NORTHEAST DALLAS BUSINESS PARK

11110-11140 PETAL ST | DALLAS, TX 75238



### LISTING HIGHLIGHTS

- |                      |  |
|----------------------|--|
| <b>ADDRESS:</b>      | 11110 - 11140 Petal Street   |
| <b>AVAILABLE SF:</b> | 2,550 - 91,815 SF  |
| <b>YEAR BUILT:</b>   | 1983   |
| <b>CLEAR HEIGHT:</b> | 16' - 18'  |
| <b>PARKING:</b>      | 157 Concrete parking spaces  |
| <b>NOTES:</b>        | <ul style="list-style-type: none"><li>• 4 Building project</li><li>• Easy access to I-635</li><li>• Distinctive landscaping and extensive lighting</li></ul> |

FOR LEASING INFORMATION:

**Jessica Reinhardt**  
jreinhardt@lee-associates.com  
972.934.4005  
972.891.5236

**Susan Cancemi**  
scancemi@lee-associates.com  
972.934.4005  
469.236.3386

OWNED BY:



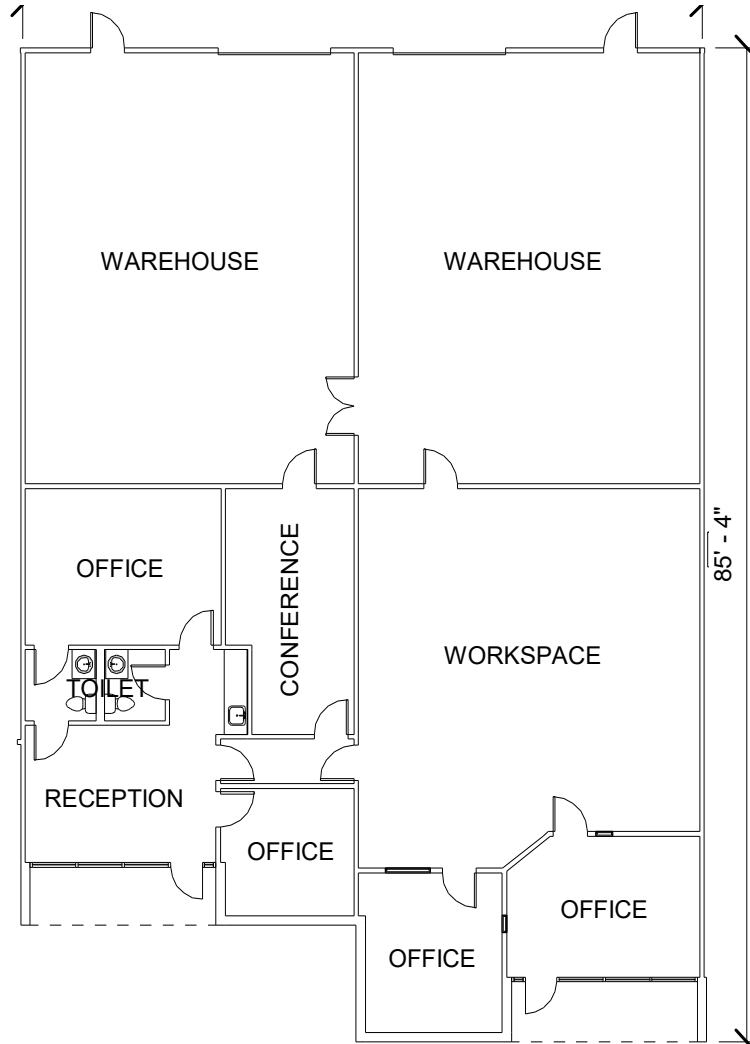
LEASED BY:



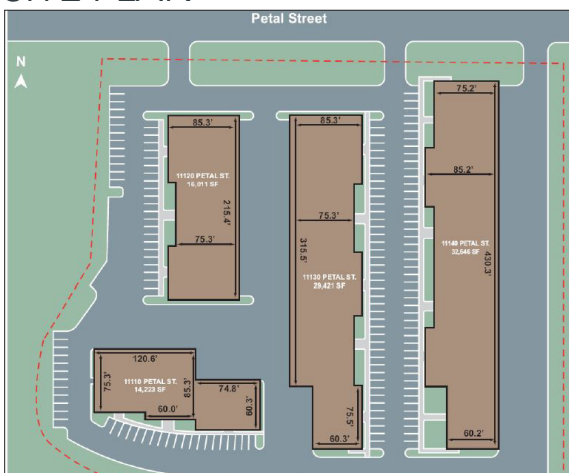
# 11110 PETAL ST

# FOR LEASE

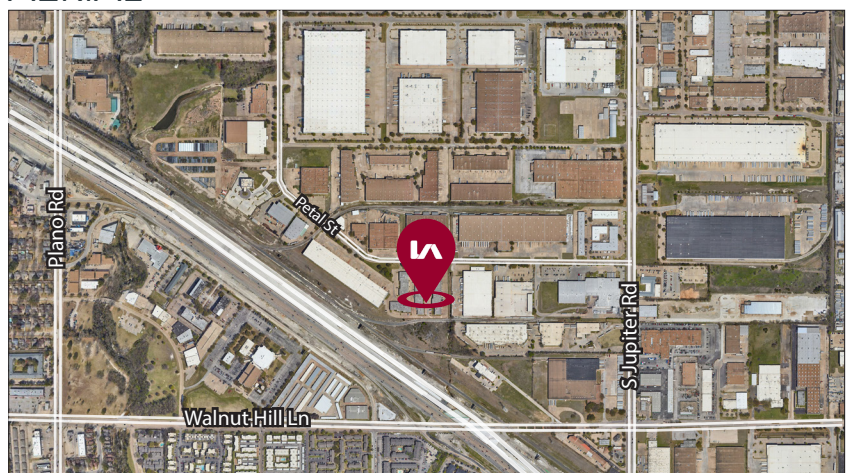
STE 300  
4,715 SF



SITE PLAN



AERIAL



All information furnished regarding property for sale, rental or financing is from sources deemed reliable, but no warranty or representation is made to the accuracy thereof and same is submitted to errors, omissions, change of price, rental or other conditions prior to sale, lease or financing or withdrawal without notice. No liability of any kind is to be imposed on the broker herein.

**Jessica Reinhardt**  
jreinhardt@lee-associates.com  
972.934.4005  
972.891.5236

**Susan Cancemi**  
scancemi@lee-associates.com  
972.934.4005  
469.236.3386

OWNED BY:



LEASED BY:

