

FOR LEASE

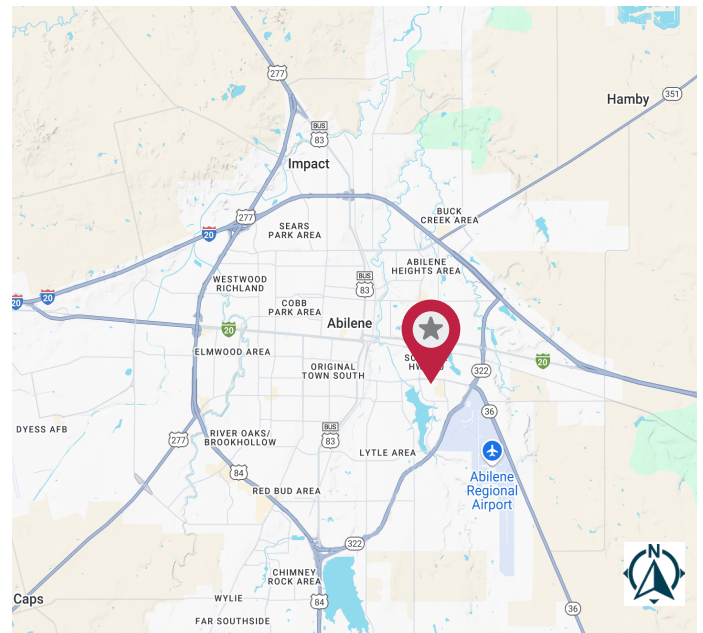
1215 E South 11th St | Abilene, TX 79602



±1,755 - 4,558 SF | OFFICE

AVAILABILITY HIGHLIGHTS

- Total Size: 1,755 - 4,558 sf
- Suite A: 1,755 sf
- Suite B: 2,803 sf
- Suites A & B can be combined for a total of 4,558 sf
- Available Immediately



FOR MORE INFORMATION:

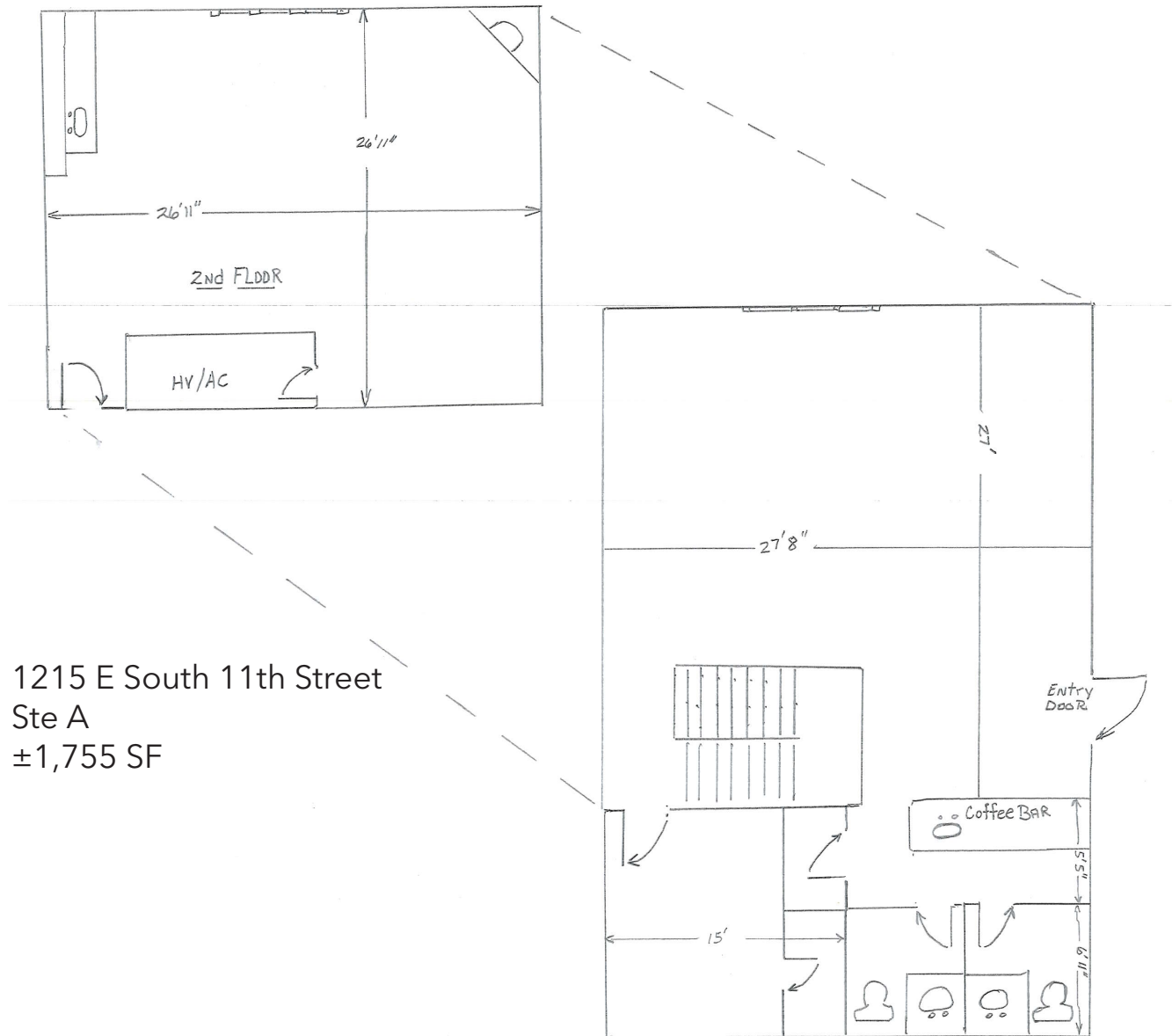
COLTON RHODES

325.660.2636

crhodes@lee-associates.co

LEE & ASSOCIATES
COMMERCIAL REAL ESTATE SERVICES
leedallas.com

FLOOR PLAN



1215 E South 11th Street
Ste A
±1,755 SF

All information furnished regarding property for sale, rental or financing is from sources deemed reliable, but no warranty or representation is made to the accuracy thereof and same is submitted to errors, omissions, change of price, rental or other conditions prior to sale, lease or financing or withdrawal without notice. No liability of any kind is to be imposed on the broker herein.

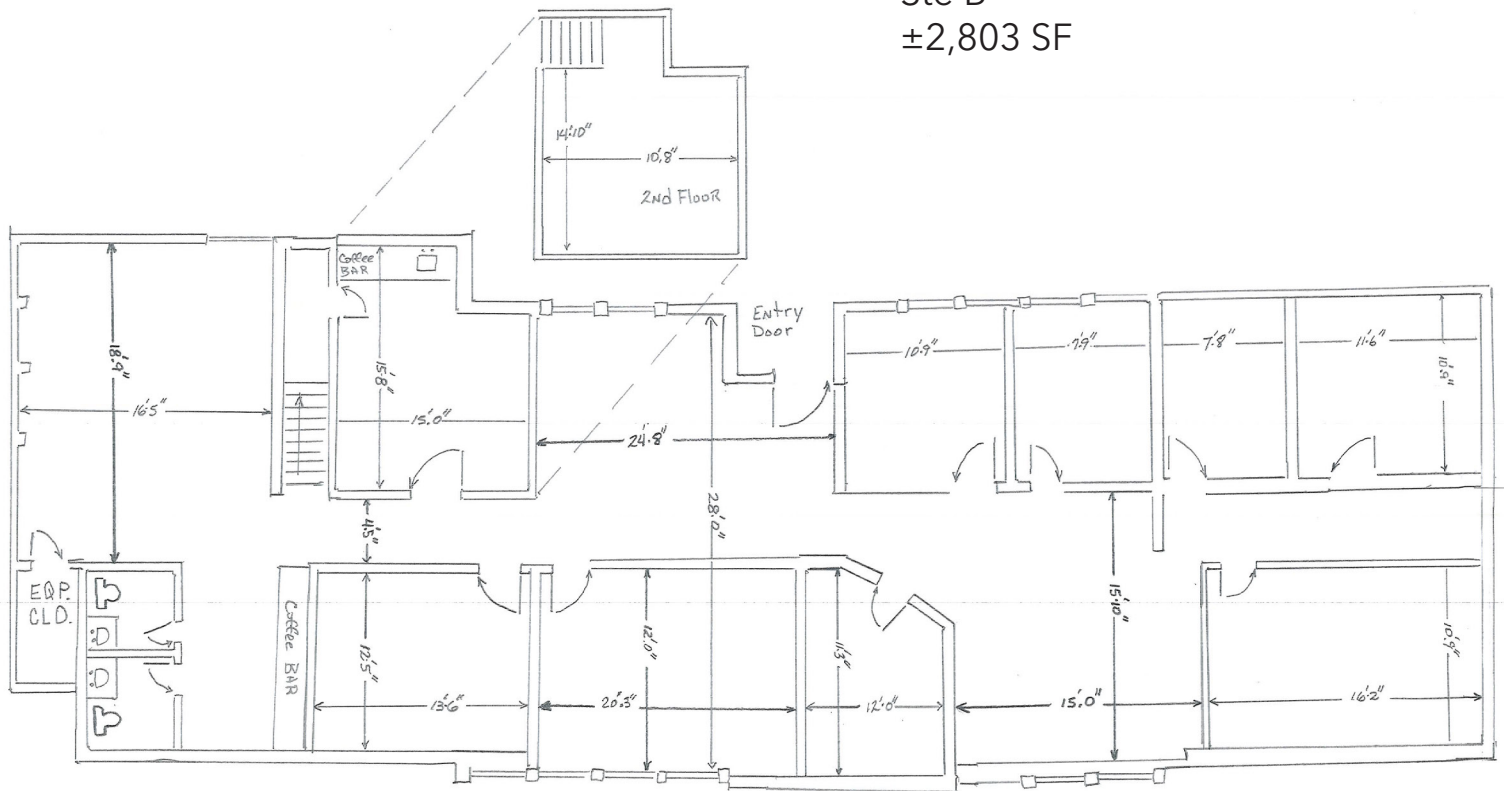
FOR MORE INFORMATION:

COLTON RHODES
325.660.2636
crhodes@lee-associates.co

LEE & ASSOCIATES
COMMERCIAL REAL ESTATE SERVICES
leadallas.com

FLOOR PLAN

1215 E South 11th Street
Ste B
±2,803 SF



All information furnished regarding property for sale, rental or financing is from sources deemed reliable, but no warranty or representation is made to the accuracy thereof and same is submitted to errors, omissions, change of price, rental or other conditions prior to sale, lease or financing or withdrawal without notice. No liability of any kind is to be imposed on the broker herein.

FOR MORE INFORMATION:

COLTON RHODES
325.660.2636
crhodes@lee-associates.co

LEE & ASSOCIATES
COMMERCIAL REAL ESTATE SERVICES
leedallas.com