

FIRST PARK 121 BUILDING F

527 Holfords Prairie Road | Lewisville, TX 75056



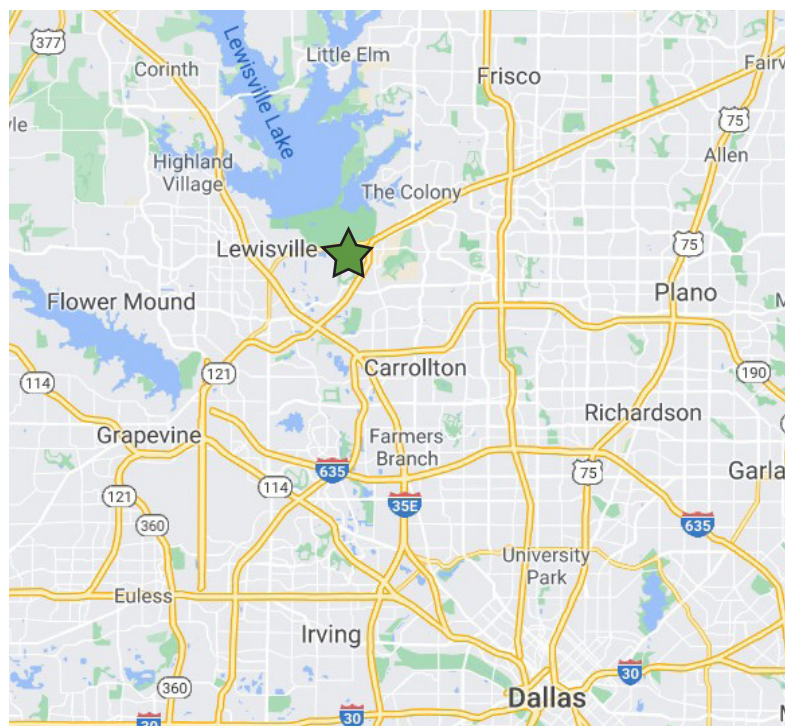
176,182 SQUARE FEET | **FOR LEASE**

PROPERTY SPECIFICATIONS

Available Space:	176,182 SF
Spec Office:	3,965 SF
Ceiling Height:	36' clear
Sprinkler System:	ESFR
Dock Doors:	36 Dock High (9' x 10')
Ramps:	2 Ramp (12' x 14')
Roof:	60 Mil TPO
Roof Insulation:	R-20
Trailer Parks:	49
Car Parks:	124
Electrical Service:	1,200 amps at 480 volts

PROPERTY HIGHLIGHTS

- Business friendly municipality offering Triple Freeport
- Excellent access to SH-121, with close proximity to I-35E and the North Dallas Tollway
- 7 miles from Plano's Legacy Business Park and Frisco's 5 Billion Dollar Mile, and abundant shopping, dining, and other amenities nearby



BROKER CONTACT

Adam Graham, CCIM, SIOR
Principle
972.934.4011
agraham@lee-associates.com

Mark Graybill, CCIM, SIOR
Principle
972.934.4007
mgraybill@lee-associates.com



LEE & ASSOCIATES

COMMERCIAL REAL ESTATE SERVICES

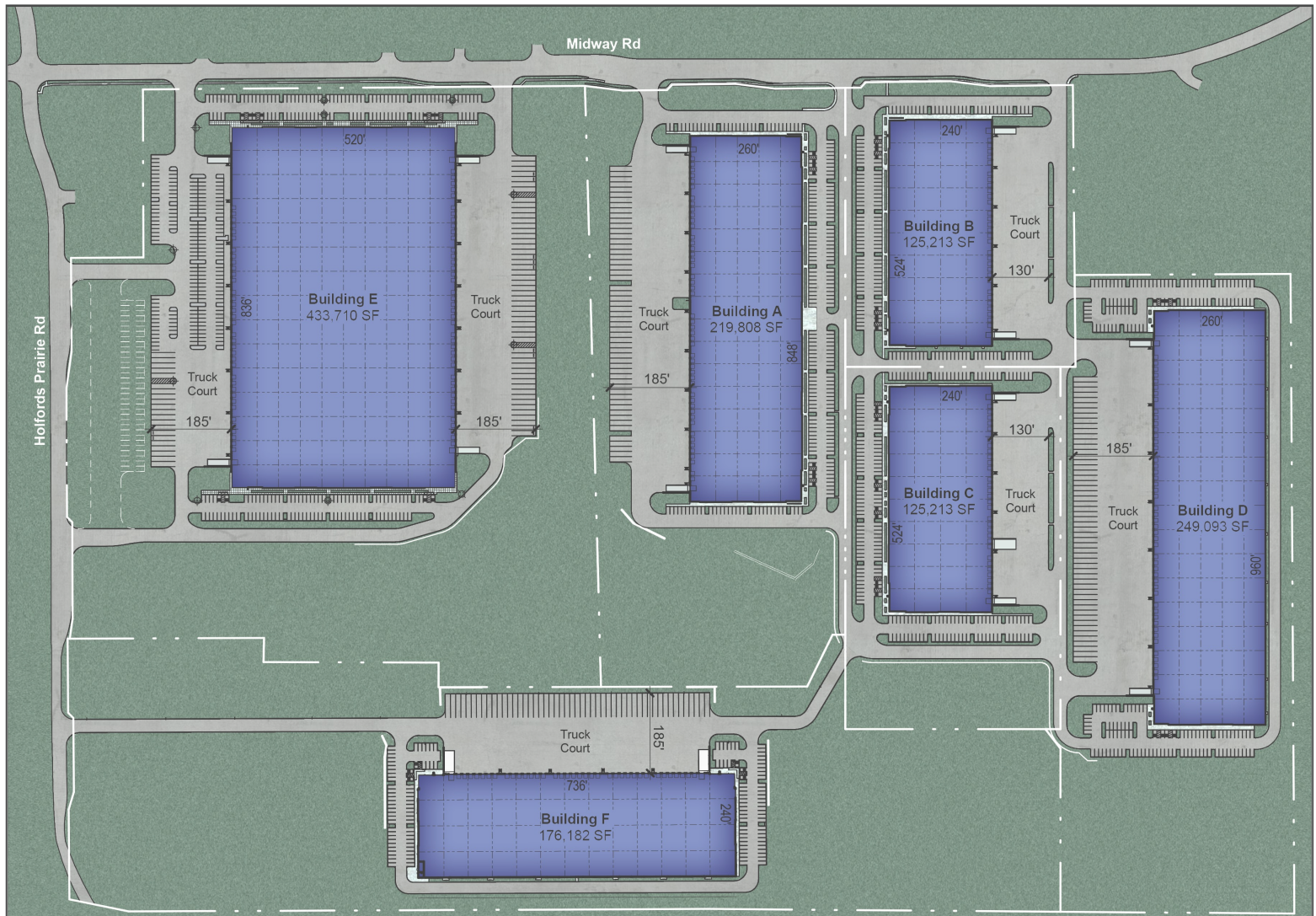
OWNER CONTACT

Robert Allen
Senior Regional Director
972.419.5715
rallen@firstindustrial.com

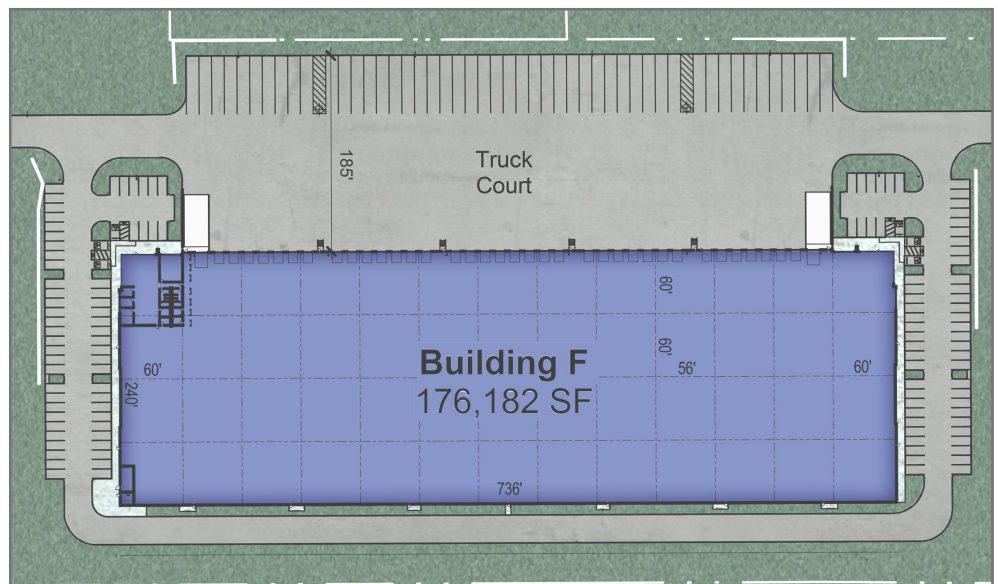
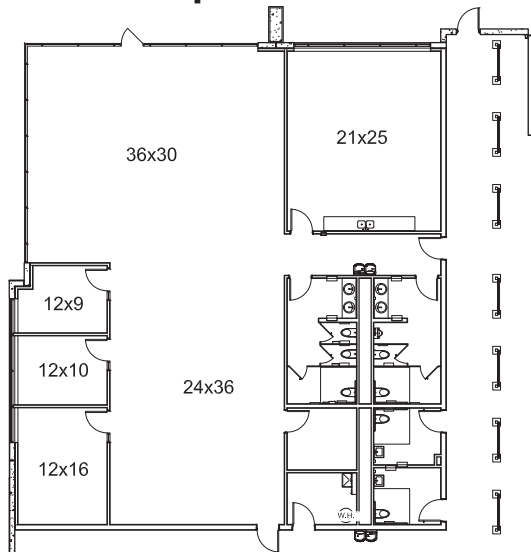


FIRST PARK 121 BUILDING F

176,182 SQUARE FEET | FOR LEASE



Spec Office



5310 Harvest Hill Road, Suite 270 Dallas, TX 75230 972.386.4700

www.firstindustrial.com

All information furnished regarding the property for sale, rental or financing is obtained from sources deemed reliable. No representation is made to the accuracy thereof and is submitted subject to errors, omissions, change of price rental or other conditions, prior sale, lease, or financing, or withdrawal without notice. First Industrial Realty Trust, Inc. represents the Seller in this transaction and as such owes all duties and obligations thereto.