

First Park 121 Building A

2001 Midway Road Suite 200 | Lewisville, TX



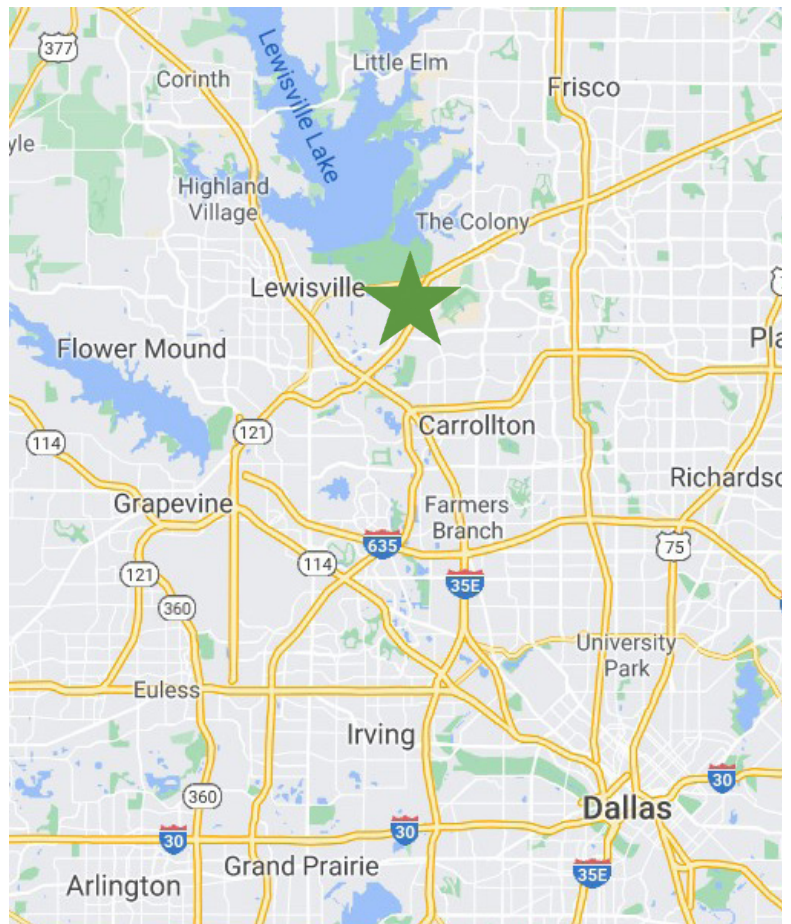
96,539 SQUARE FEET | FOR LEASE

PROPERTY SPECIFICATIONS

Available Space:	96,539 SF
Office Space:	4,069 SF
Clear Height:	32'
Sprinkler:	ESFR
Door Docks:	21 Dock (9'x10') 1 Ramp (12'x14')
Roof:	60 Mil TPO
Roof Insulation:	R-20
Trailer Parks:	22
Car Parks:	94

PROPERTY HIGHLIGHTS

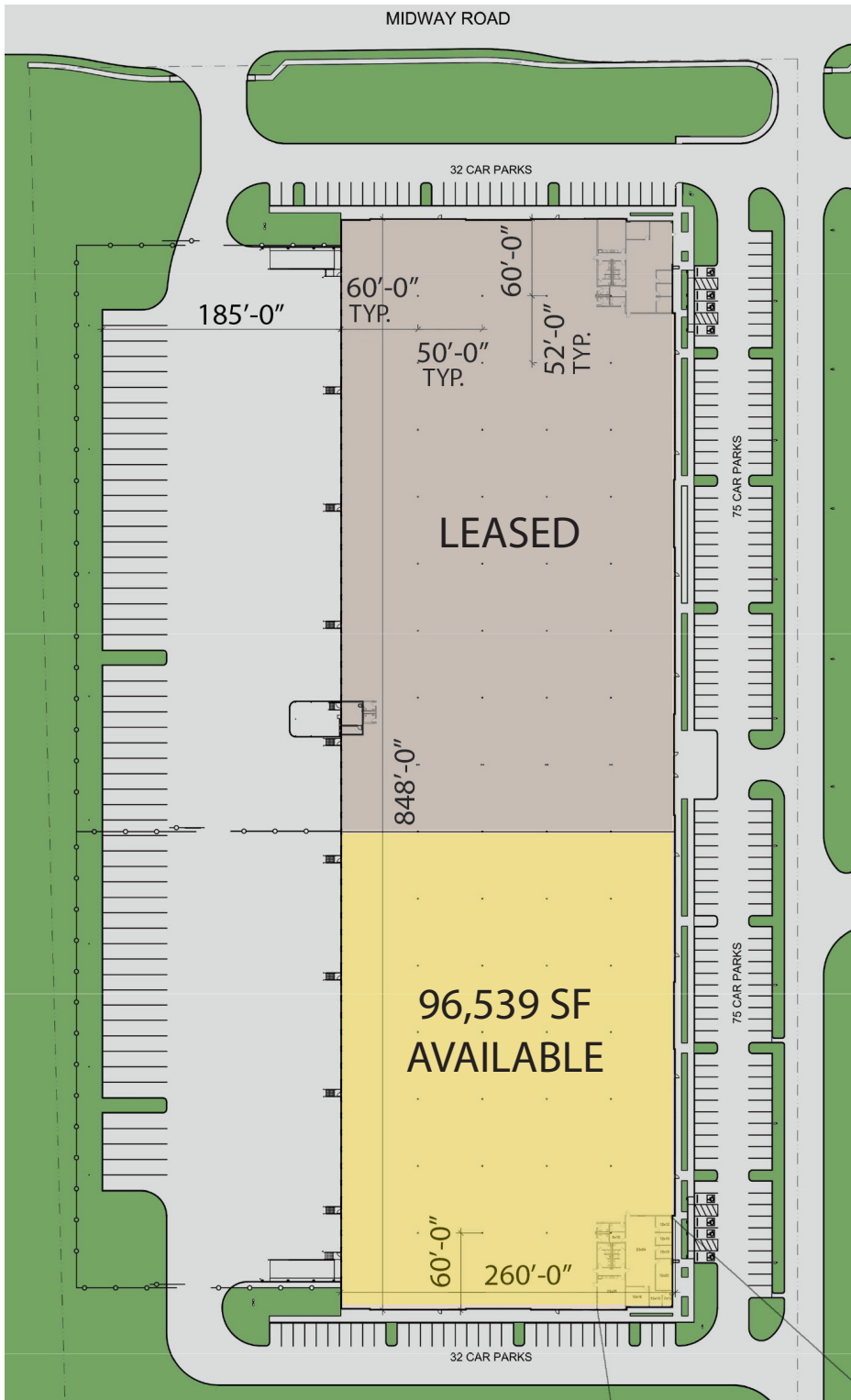
- Business friendly municipality offering TripleFreeport
- Excellent access to SH-121, with close proximity to I-35E and the North Dallas Tollway
- 7 miles from Plano's Legacy Business Park and Frisco's 5 Billion Dollar Mile, and abundant shopping, dining, and other amenities nearby



First Park 121 Building A

96,539 SQUARE FEET | FOR LEASE

SPACE PLAN



BROKER CONTACT

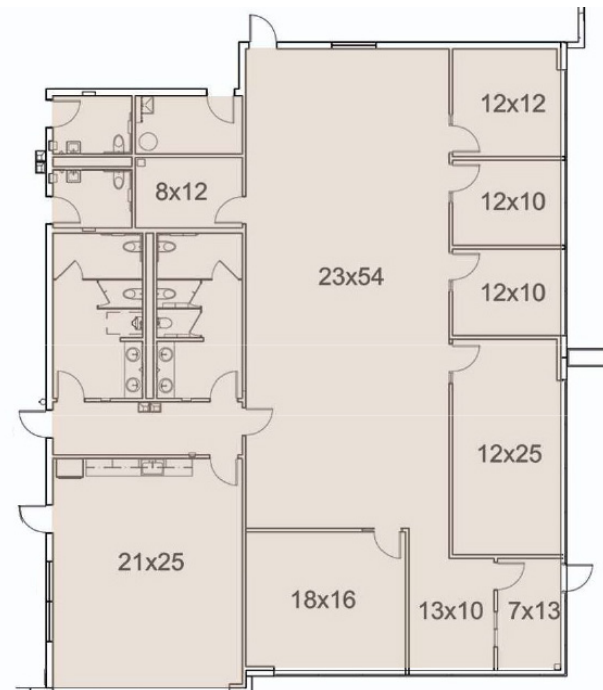
Mark Graybill, CCIM, SIOR
Principal
972.934.4007
mgraybill@lee-associates.com

Adam Graham, CCIM, SIOR
Principal
972.934.4011
agraham@lee-associates.com



OWNER CONTACT

Robert Allen
Senior Regional Director
972.419.5715
rallen@firstindustrial.com



5310 Harvest Hill Road, Suite 270

Dallas, TX 75230

972.386.4700

www.firstindustrial.com

All information furnished regarding the property for sale, rental or financing is obtained from sources deemed reliable. No representation is made to the accuracy thereof and is submitted subject to errors, omissions, change of price rental or other conditions, prior sale, lease, or financing, or withdrawal without notice. First Industrial Realty Trust, Inc. represents the Seller in this transaction and as such owes all duties and obligations thereto.