

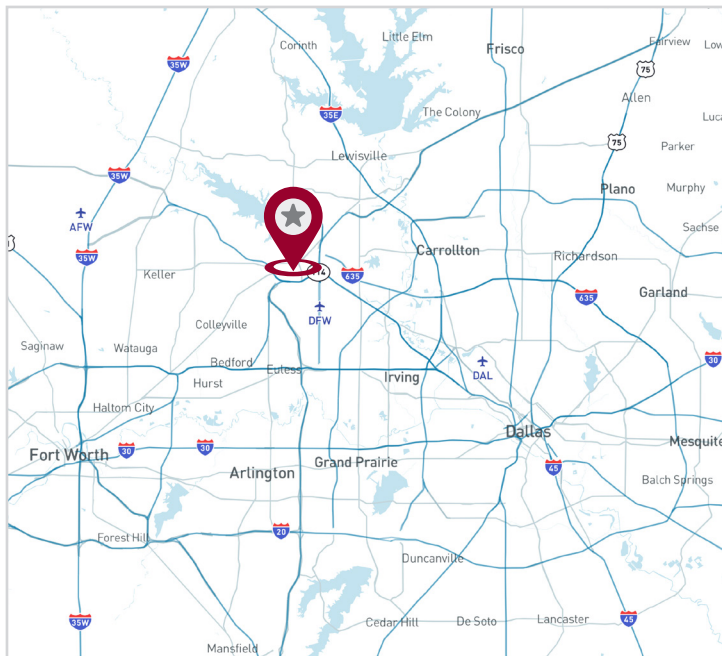
FOR LEASE

11,279 SF | CROSSDOCK WAREHOUSE



1104 E DALLAS RD, SUITE 200

Grapevine, TX 76051



AVAILABILITY HIGHLIGHTS

- 11,279 SF Total
- ±2,635 SF Office
- 23 Clear Height
- 16 Dock High Overhead Doors
- Cross Dock
- Available Immediately

FOR LEASING INFORMATION:

Chris Hillman
Director

chillman@lee-associates.com
972.934.4004

Adam Graham, SIOR, CCIM
Principal

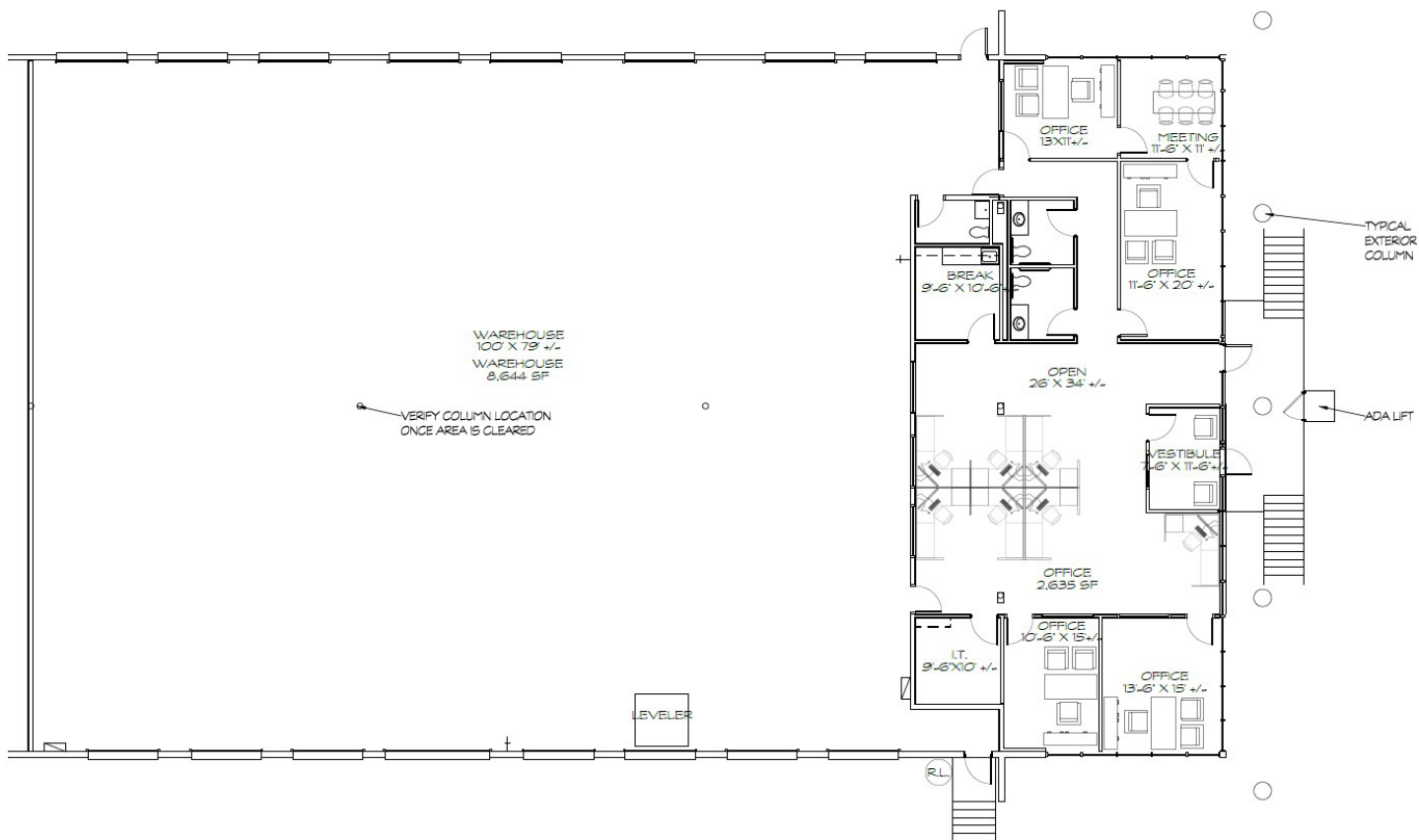
agraham@lee-associates.com
972.934.4011

LEASING:

LEE & ASSOCIATES
COMMERCIAL REAL ESTATE SERVICES

SITE PLAN

SQUARE FOOT ANALYSIS	
OFFICE	2,635 SF
WAREHOUSE SF	8,644 SF
TOTAL SF	11,279



All information furnished regarding property for sale, rental or financing is from sources deemed reliable, but no warranty or representation is made to the accuracy thereof and same is submitted to errors, omissions, change of price, rental or other conditions prior to sale, lease or financing or withdrawal without notice. No liability of any kind is to be imposed on the broker herein.

FOR LEASING INFORMATION:

Chris Hillman
Director

chillman@lee-associates.com
972.934.4004

Adam Graham, SIOR, CCIM
Principal

agraham@lee-associates.com
972.934.4011

LEASING:

LEE & ASSOCIATES
COMMERCIAL REAL ESTATE SERVICES