

MLP

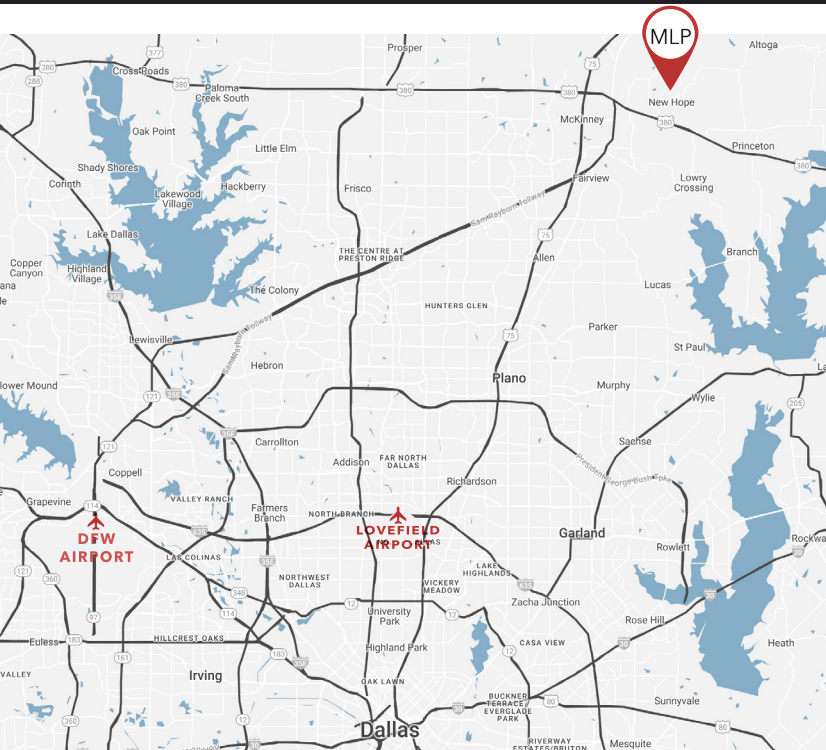
**MCKINNEY
LOGISTICS
PARK**

**FOR LEASE
BUILDING 2
209,016 SF AVAILABLE**



McKINNEY LOGISTICS PARK

BUILDING 2 | 600 MCINTYRE ROAD | MCKINNEY, TX 75071



PROJECT HIGHLIGHTS

- Available Space: 209,016 SF (Full Building)
- Office: ± 1,996 SF
- Clear Height: 32'
- Dock Doors: 38 Dock High (19 outfitted with 40,000lb Pneumatic Airbag Levelers)
- Ramps: 2 (12' x 14')
- Building Depth: 276'
- Column Spacing: 50' x 54' (60' Speed Bay)
- Car Parks: 173 (Full Building)
- Trailer Stalls: 30 Dedicated
- Sprinkler: ESFR
- Amenities: Two Storefront Entrances, 2,000 Amp, 480V, Electrical Service, Whiteboxed Warehouse with LED Lighting (25' FC)

FOR LEASING INFORMATION:



Ken Wesson, SIOR, CCIM
kwesson@lee-associates.com
C: 469.855.5222

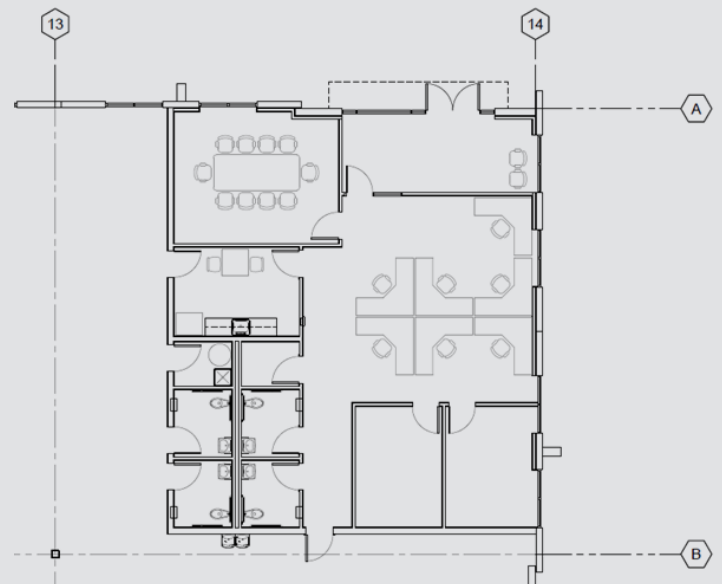
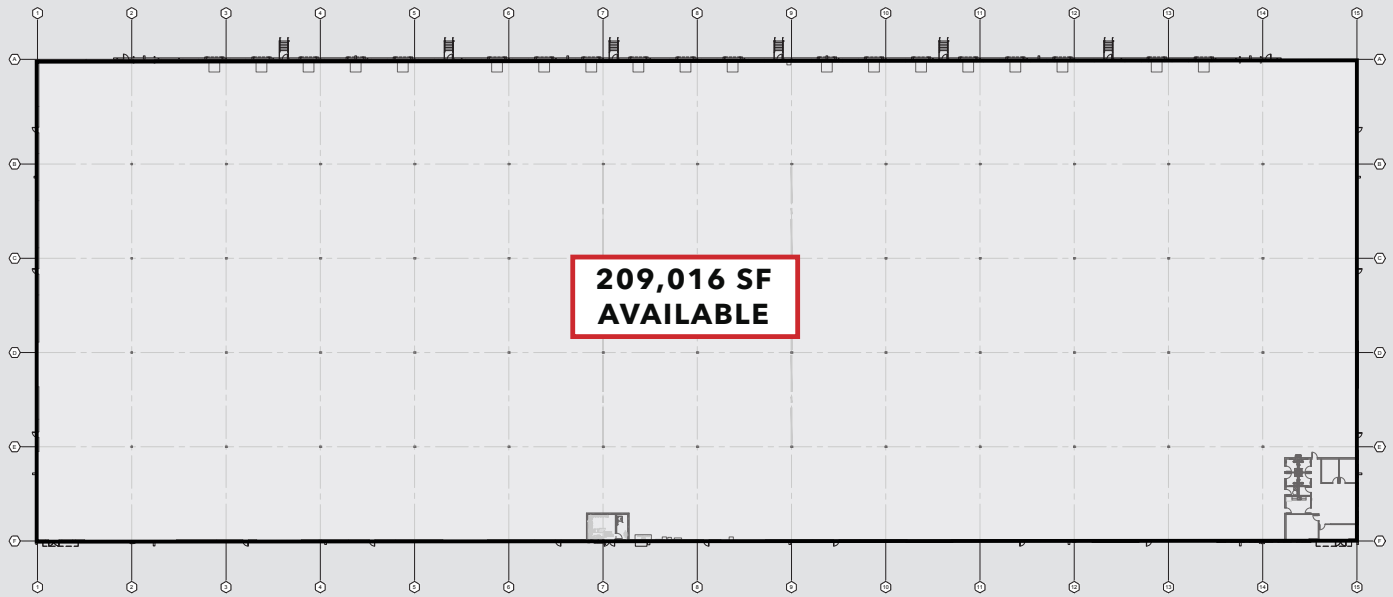
Adam Graham, SIOR, CCIM
agraham@lee-associates.com
C: 214.335.3320

DEVELOPED AND MANAGED BY:



FLOOR PLAN

BUILDING 2 AVAILABILITY



OFFICE - 1996 SF

FOR LEASING INFORMATION:



Ken Wesson, SIOR, CCIM
kwesson@lee-associates.com
C: 469 855 5222

Adam Graham, SIOR, CCIM
agraham@lee-associates.com
C: 214.335.3320

DEVELOPED AND MANAGED BY:

