

FOR LEASE

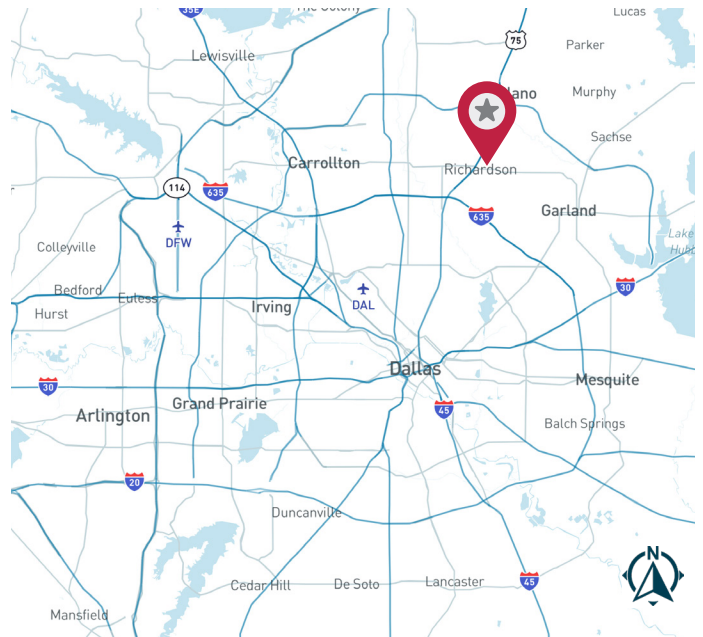
1122 Commerce Drive | Richardson, TX 75081



Commerce Service Center
±2,801 SF

AVAILABILITY HIGHLIGHTS

- Built in 1978
- 14' Clear Height
- Rear loading with semi-dock high roll up doors
- Easy access to Central Expressway, Tollway 190, and I-635



FOR MORE INFORMATION:

JESSICA REINHARDT
972.934.4005
jreinhardt@lee-associates.com

SUSAN CANCEMI
972.934.4005
scancemi@lee-associates.com

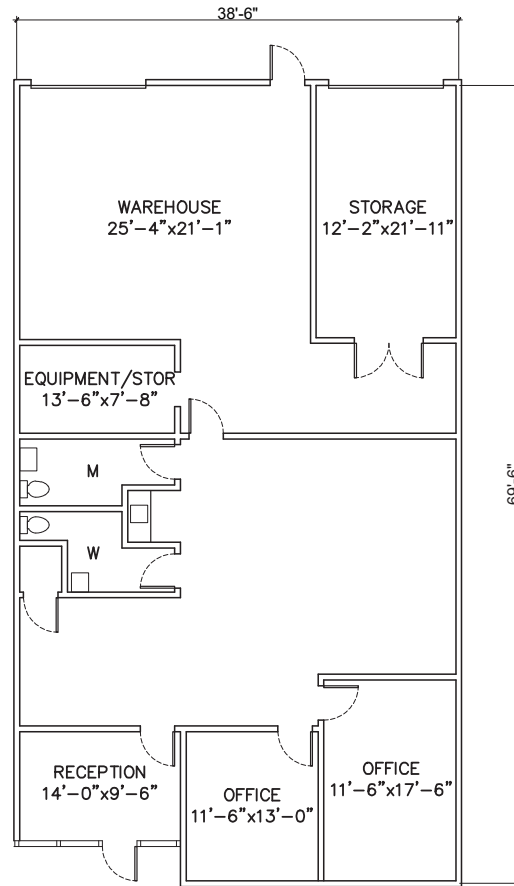
MANAGED BY:

CIP REAL ESTATE

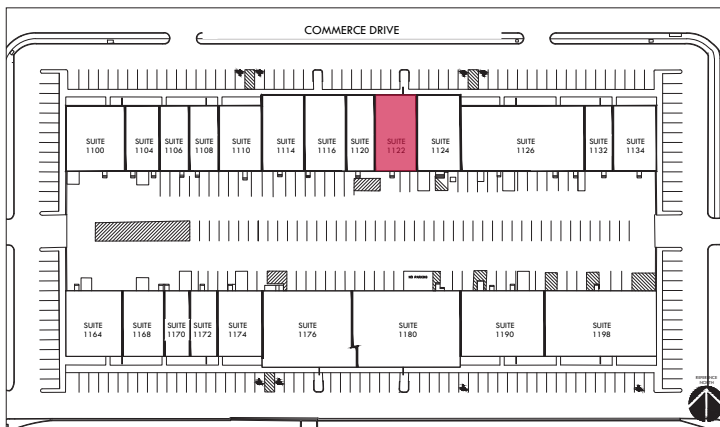
LEE & ASSOCIATES
COMMERCIAL REAL ESTATE SERVICES
leedallas.com

FLOOR PLAN

STE 1122
±2,801 SF



SITE PLAN



AERIAL



All information furnished regarding property for sale, rental or financing is from sources deemed reliable, but no warranty or representation is made to the accuracy thereof and same is submitted to errors, omissions, change of price, rental or other conditions prior to sale, lease or financing or withdrawal without notice. No liability of any kind is to be imposed on the broker herein.

FOR MORE INFORMATION:

JESSICA REINHARDT
972.934.4005
jreinhardt@lee-associates.com

SUSAN CANCEMI
972.934.4005
scancemi@lee-associates.com

MANAGED BY:

