

the **MILLER**
INDUSTRIAL PARK

Strategically located in the Garland submarket, **The Miller Industrial Park** is a four-building, 214,000 square foot modern industrial project of choice for logistics, showroom, distribution, manufacturing, and ecommerce players. As one of the best infill locations in the DFW industrial market, The Miller is located immediately off Miller Road, a main area thoroughfare, with direct access to Interstate 635, providing connectivity to some of the most affluent neighborhoods of north Dallas and the deep labor pools in south Dallas.

Welcome to The Miller!



M2G VENTURES

THE MILLER

PROJECT ATTRIBUTES

214,000 Total SF

Four Buildings

Corner Location

Strong Visibility

Easy Access to Miller Road

98% Leased

PROJECT IMPROVEMENTS

Monument and Wayfinding
Signage

Fresh Exterior Paint

Upgraded Landscaping

Improved Exterior Lighting

Updated Parking Lot Striping



M2G VENTURES





**10202 MILLER RD
31,500 SF AVAILABLE**

MILLER ROAD

BROCKWOOD ROAD

**10362 MILLER RD
6,703 SF AVAILABLE**



VACANCY INFORMATION

10362 Miller Road
Dallas, TX 75238

6,703 SF Suite

4,000 SF Office (can be reduced)

16' Clear Height

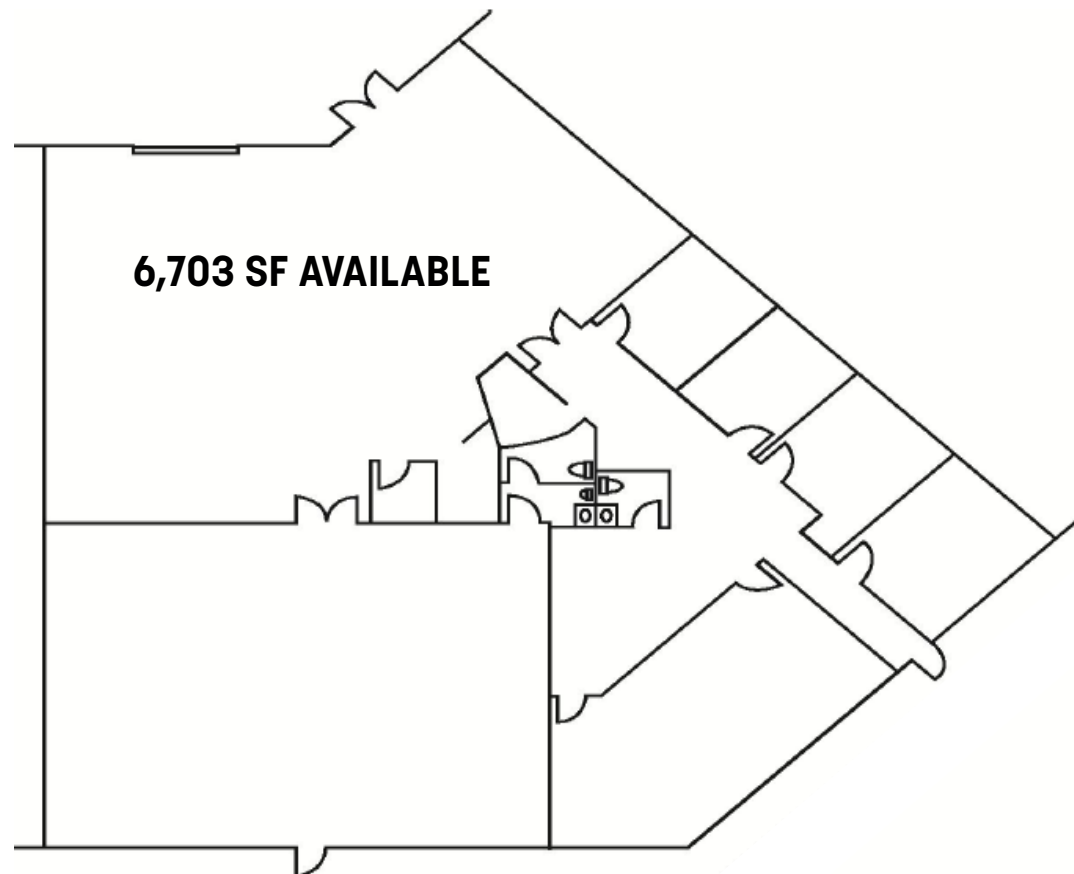
Close Access to 635

Built in 1991

Rear Load Building

1 Grade Level Door

Frontage on Miller Rd



VACANCY INFORMATION

10202 Miller Rd
Dallas, TX 75238

31,500 SF Suite

3,350 SF Office

24' Clear Height

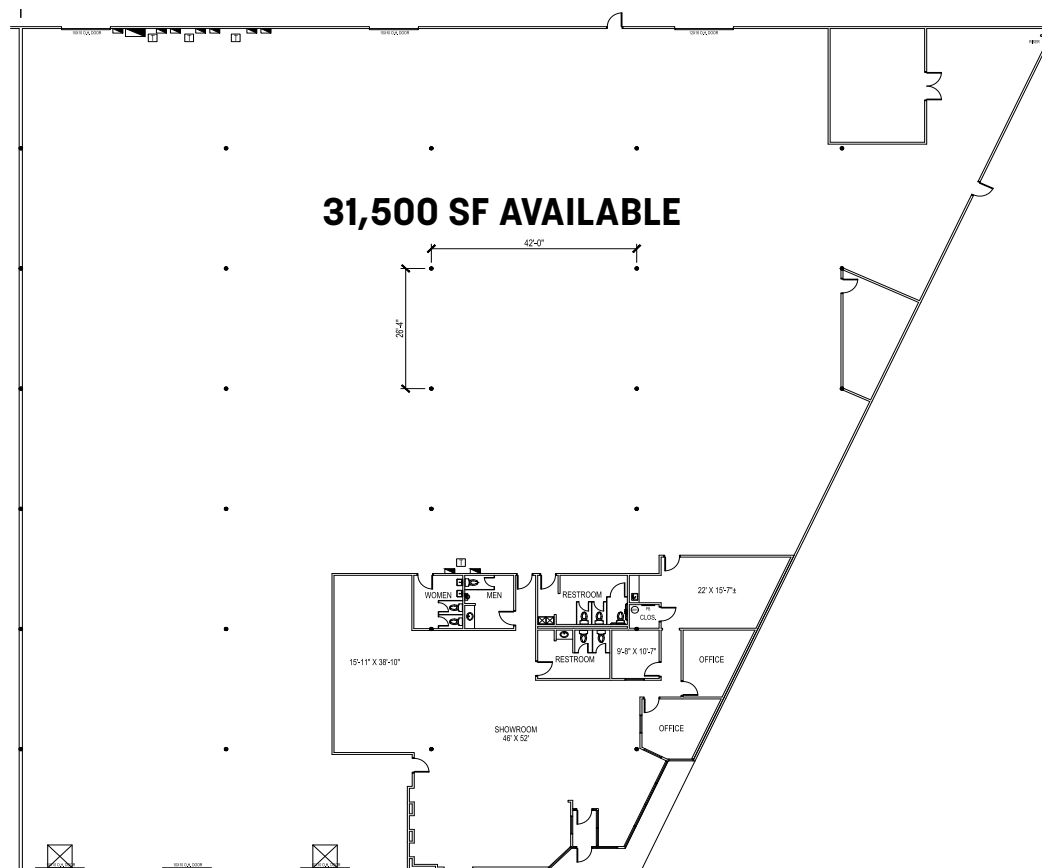
Sprinklered

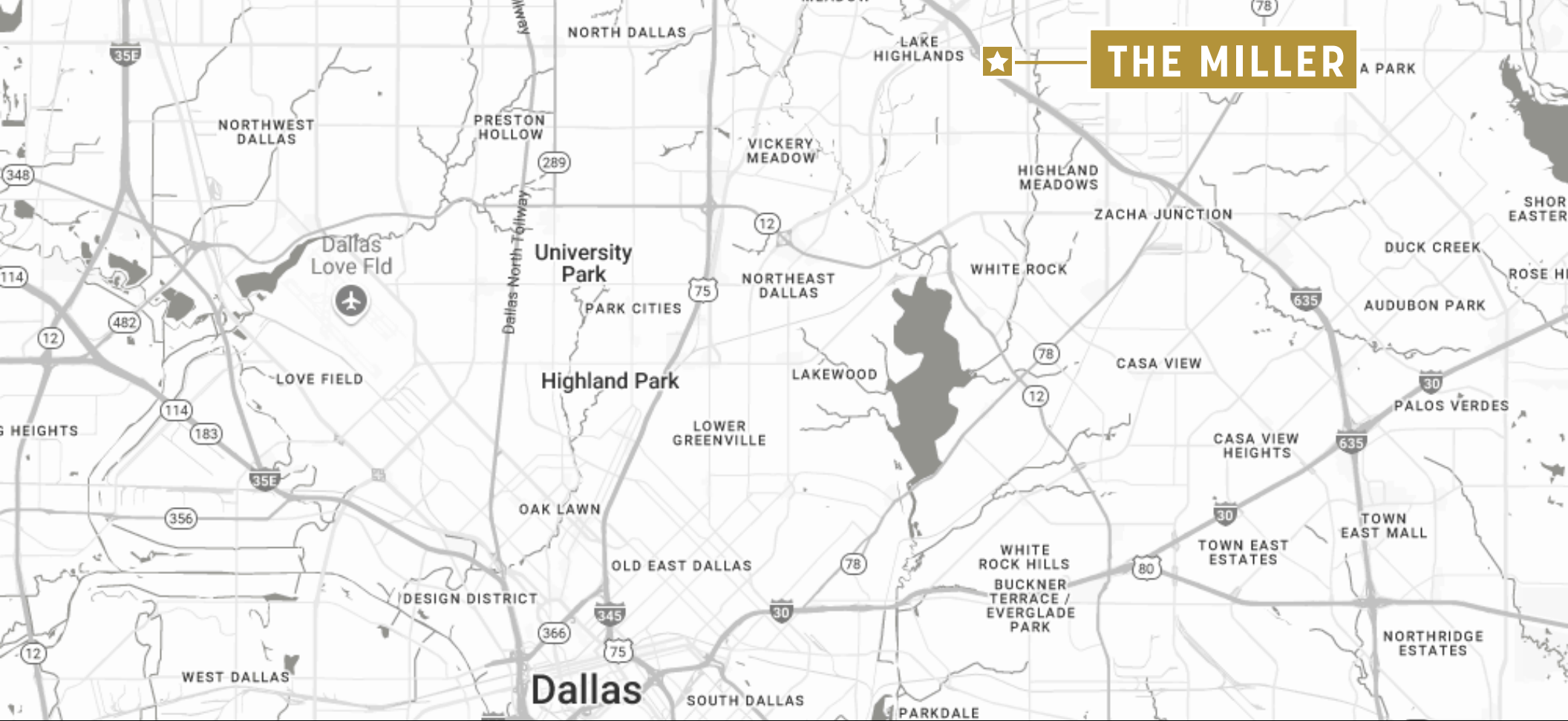
Built in 1991

Immediate Access to I-635

3 Dock High Doors

Frontage on Miller Rd





THE MILLER

PRIME LOCATION

THE MILLER INDUSTRIAL PARK

0.2 MILES

I-635

8 MILES

I-30

15 MILES

I-35

15 MILES

Dallas CBD

16 MILES

Dallas Lovefield

25 MILES

Dallas/Fort Worth International Airport

the **MILLER**

INDUSTRIAL PARK



BRETT LEWIS

214 669 1717

blewis@lee-associates.com

TAYLOR STELL

214 558 1969

tstell@lee-associates.com

THE INFORMATION CONTAINED HEREIN HAS BEEN GIVEN TO US BY THE OWNER OF THE PROPERTY OR OTHER SOURCES WE DEEM RELIABLE. WE HAVE NO REASON TO DOUBT ITS ACCURACY, BUT WE DO NOT GUARANTEE IT. ALL INFORMATION SHOULD BE VERIFIED PRIOR TO PURCHASE OR LEASE.

