

FOR LEASE

11140 Petal Street, Suite 300 | Dallas, TX 75238



Northeast Dallas Business Park
±2,550 SF

AVAILABILITY HIGHLIGHTS

- ±2,550 SF Available Space
- Built in 1983
- 16'-18' Clear Height
- 4 Building Project
- Distinctive landscaping and extensive lighting
- Easy access to I-635



FOR MORE INFORMATION:

JESSICA REINHARDT
972.934.4005
jreinhardt@lee-associates.com

SUSAN CANCEMI
972.934.4005
scancemi@lee-associates.com

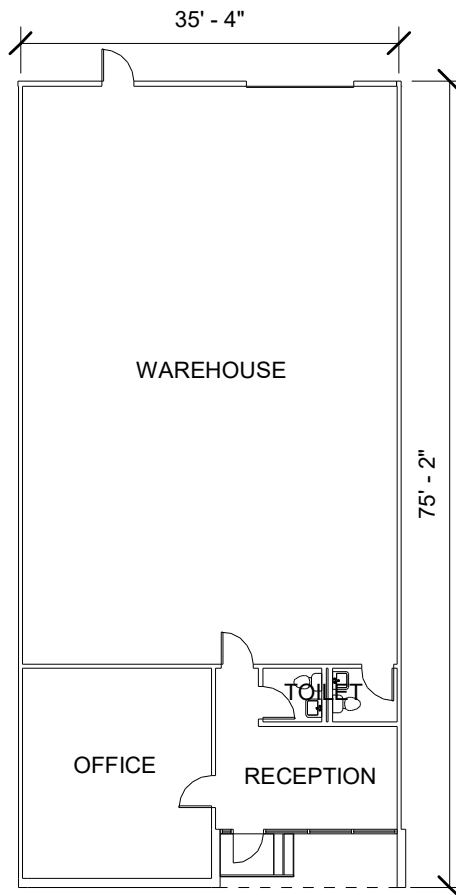
MANAGED BY:



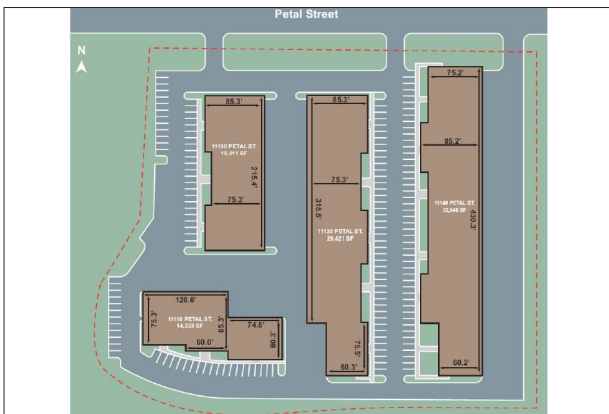
FLOOR PLAN

STE 300
±2,550 SF

- 18' Clear Height
- Dock High Loading



SITE PLAN



AERIAL



All information furnished regarding property for sale, rental or financing is from sources deemed reliable, but no warranty or representation is made to the accuracy thereof and same is submitted to errors, omissions, change of price, rental or other conditions prior to sale, lease or financing or withdrawal without notice. No liability of any kind is to be imposed on the broker herein.

FOR MORE INFORMATION:

JESSICA REINHARDT
972.934.4005
jreinhardt@lee-associates.com

SUSAN CANCEMI
972.934.4005
scancemi@lee-associates.com

MANAGED BY:

