

FOR LEASE

777-797 Grove Road | Richardson, TX 75081



Grove Business Park
±1,346-124,187 SF

PROPERTY HIGHLIGHTS

- 4 Building Business Park
- ±1,346-124,187 SF
- Built in 1983
- Clear Height 14'-20'
- Parking Ratio 3.49/1,000
- Rear loading with dock high, grade level or double personnel doors



FOR MORE INFORMATION:

JESSICA REINHARDT
972.934.4005
jreinhardt@lee-associates.com

SUSAN CANCEMI
972.934.4005
scancemi@lee-associates.com

MANAGED BY:

CIP REAL ESTATE

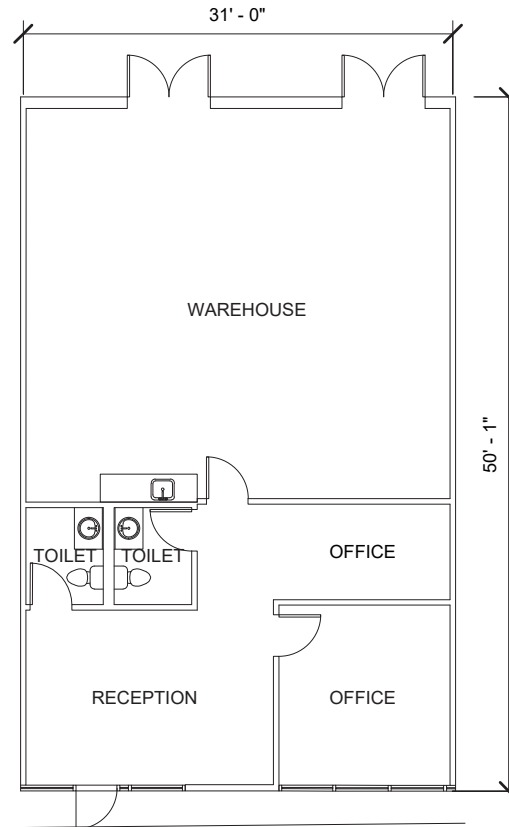
LEE & ASSOCIATES
COMMERCIAL REAL ESTATE SERVICES
leedallas.com

AVAILABILITY HIGHLIGHTS

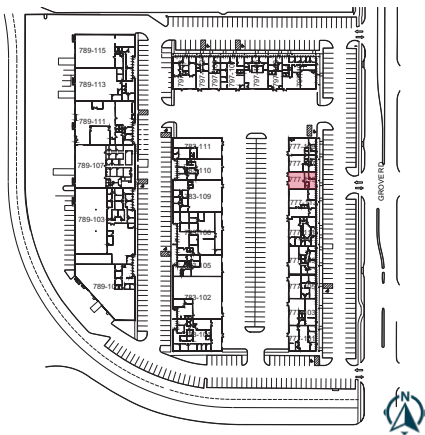
777 GROVE RD | SUITE 115

- ±1,550 SF
- Mix of office, work area, and warehouse space
- Restrooms
- 14' Clear Height

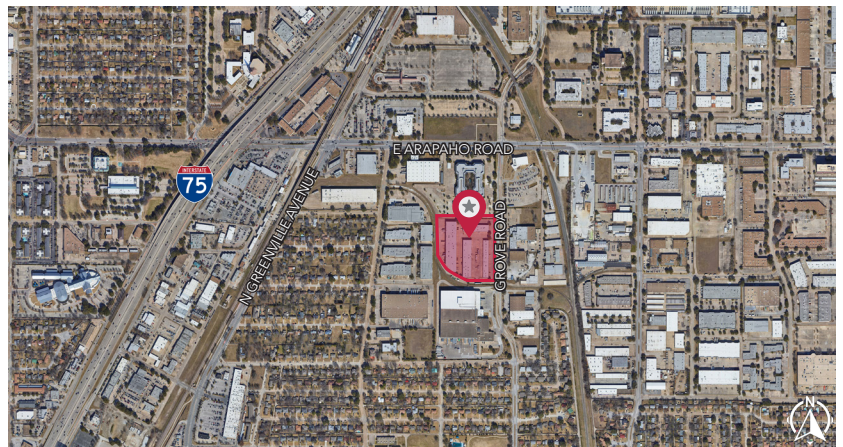
FLOOR PLAN



SITE PLAN



AERIAL



All information furnished regarding property for sale, rental or financing is from sources deemed reliable, but no warranty or representation is made to the accuracy thereof and same is submitted to errors, omissions, change of price, rental or other conditions prior to sale, lease or financing or withdrawal without notice. No liability of any kind is to be imposed on the broker herein.

FOR MORE INFORMATION:

JESSICA REINHARDT
972.934.4005
jreinhardt@lee-associates.com

SUSAN CANCEMI
972.934.4005
scancemi@lee-associates.com

MANAGED BY:

CIP REAL ESTATE

LEE & ASSOCIATES
COMMERCIAL REAL ESTATE SERVICES
leedallas.com