

# FOR LEASE

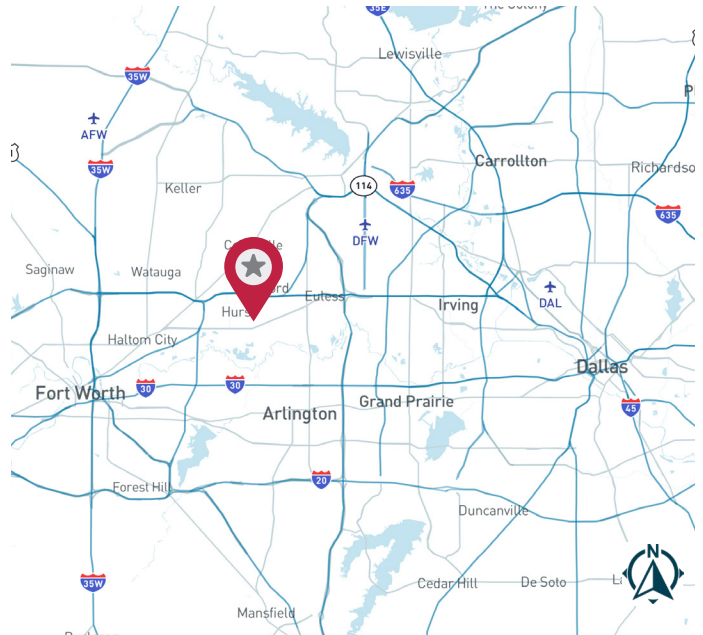
**1105 Arwine Ct** | Euless, TX 76040



ARWINE BUSINESS PARK  
**±867 - 2,853 SF**

## AVAILABILITY HIGHLIGHTS

- ±867 - 2,853 SF Office Spaces
- 8 Offices
- Reception Area, Eat-in Kitchen, Hall
- 2 Restrooms
- Large Sitting Room & Meeting Room
- Porch
- Great parking spaces
- 20 minutes to DFW Airport and 30 minutes to Love Field Airport
- \$10.00/SF Modified Gross



FOR MORE INFORMATION:

**PHILLIP ROSENFELD**

469.222.4159

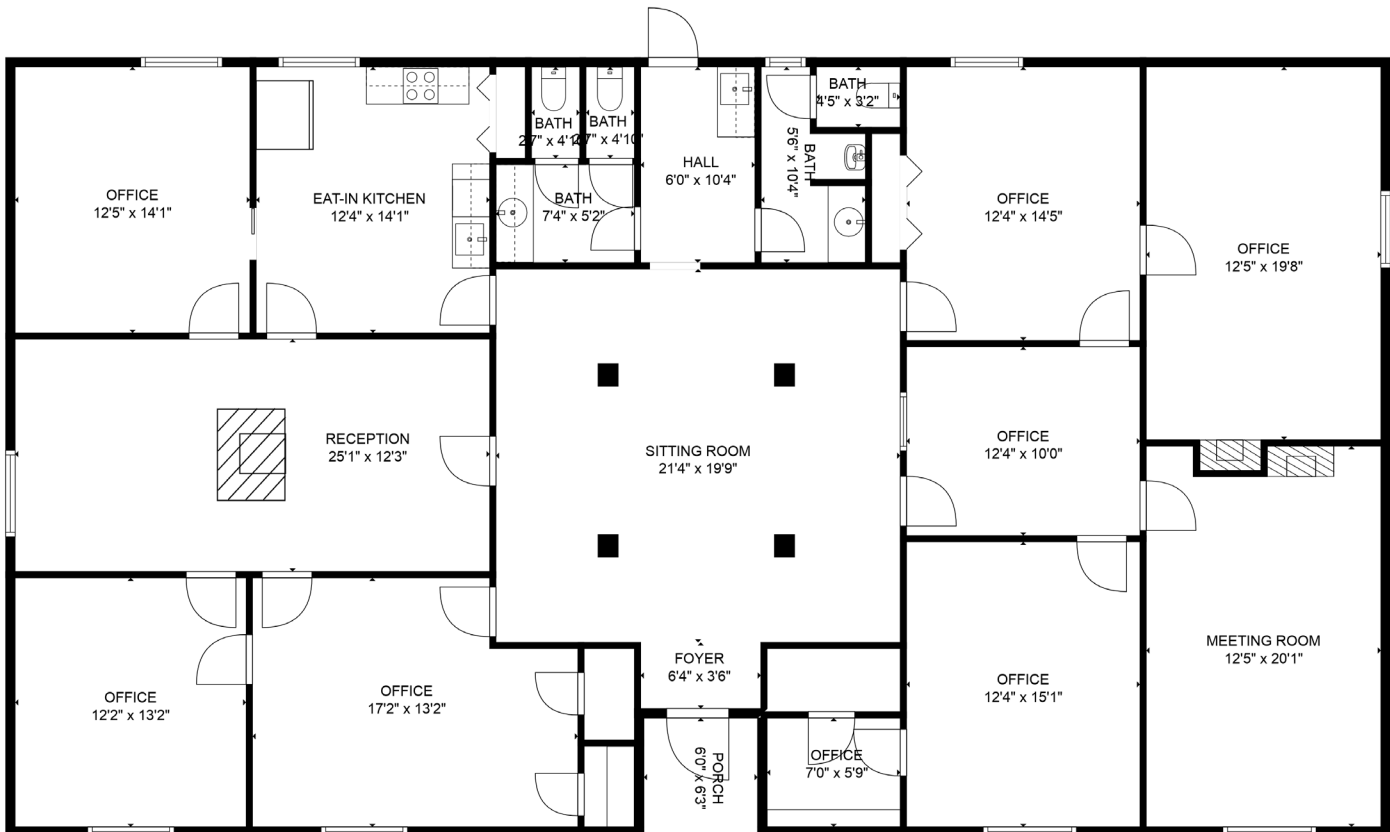
[prosenfeld@lee-associates.com](mailto:prosenfeld@lee-associates.com)

**LEE & ASSOCIATES**  
COMMERCIAL REAL ESTATE SERVICES  
[leedallas.com](http://leedallas.com)

# FOR LEASE

# ARWINE BUSINESS PARK

## FLOOR PLAN



**TOTAL: 2853 sq. ft**  
FLOOR 1: 2853 sq. ft  
EXCLUDED AREAS: PORCH: 38 sq. ft

FLOOR PLAN CREATED BY CUBICASA APP. MEASUREMENTS DEEMED HIGHLY RELIABLE BUT NOT GUARANTEED.

All information furnished regarding property for sale, rental or financing is from sources deemed reliable, but no warranty or representation is made to the accuracy thereof and same is submitted to errors, omissions, change of price, rental or other conditions prior to sale, lease or financing or withdrawal without notice. No liability of any kind is to be imposed on the broker herein.

FOR MORE INFORMATION:

**PHILLIP ROSENFELD**  
469.222.4159  
prosenfeld@lee-associates.com

**LEE & ASSOCIATES**  
COMMERCIAL REAL ESTATE SERVICES  
leedallas.com