

AVAILABLE
FOR LEASE

**121 LOGISTICS
PARK**

BLDG 1 - 500 W STATE HIGHWAY 121
COPPELL, TX 75019

BLDG 2 - 500 W VISTA RIDGE MALL DR
LEWISVILLE, TX 75067



MOVE-IN READY | TWO INFILL AND HIGH VISIBILITY WAREHOUSES TOTALING 339,297 SF

FOR MORE INFORMATION:



ADAM GRAHAM, SIOR, CCIM
214.335.3320
agraham@lee-associates.com

ALEX WILSON
443.370.3427
alexw@lee-associates.com

TOMAS WILSON
857.297.7000
twilson@lee-associates.com

OWNED AND DEVELOPED BY:





121
TEXAS

BUILDING 1
257,598 SF

BUILDING 2
81,689 SF

121
TEXAS

Sam
Rayburn
Tollway
TOLL



DEMOGRAPHICS

Total Population (2025)	43,196
Median Age	39.5
Median Household Income	\$144,246
Coppell City Labor Force	24,512
Average Home Value Increase	\$82,253
Number of Housing Units	15,570

DRIVE DISTANCES

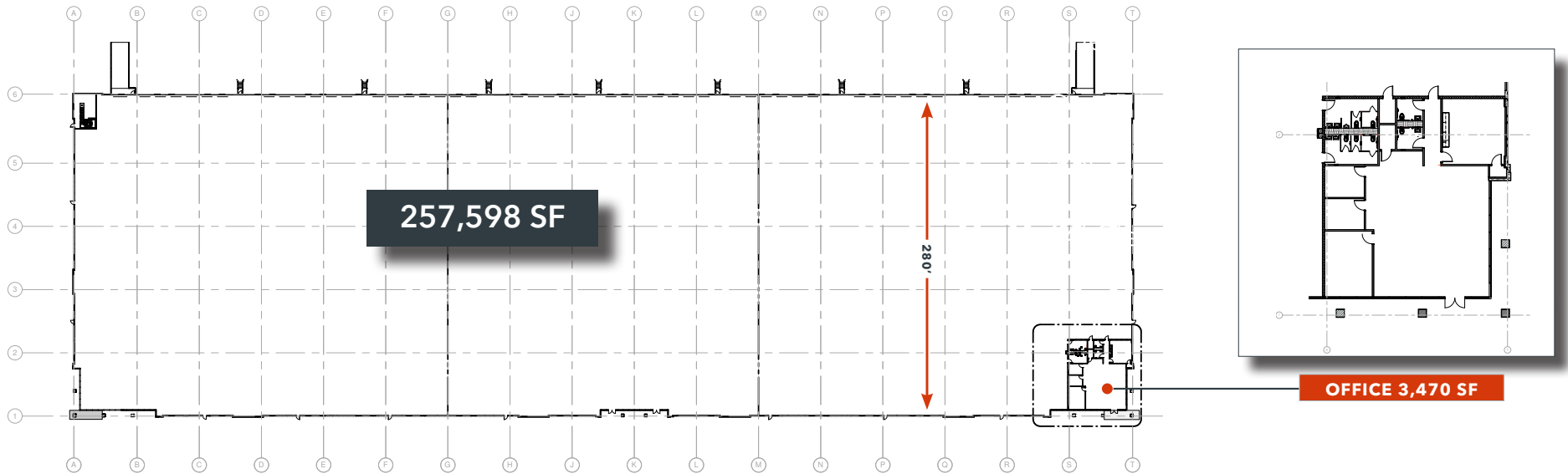
SH 121	Texas Immediate Access
Interstate 635	4 Minutes 3.7 Miles
SH 114	5 Minutes 5.2 Miles
Interstate 35 E	6 Minutes 4 Miles
DFW International Airport	5 Minutes 5.1 Miles
Dallas CBD	26-40 Minutes 24.5 Miles

BUILDING 1 | 500 W STATE HIGHWAY 121

121 LOGISTICS PARK



BLDG 1



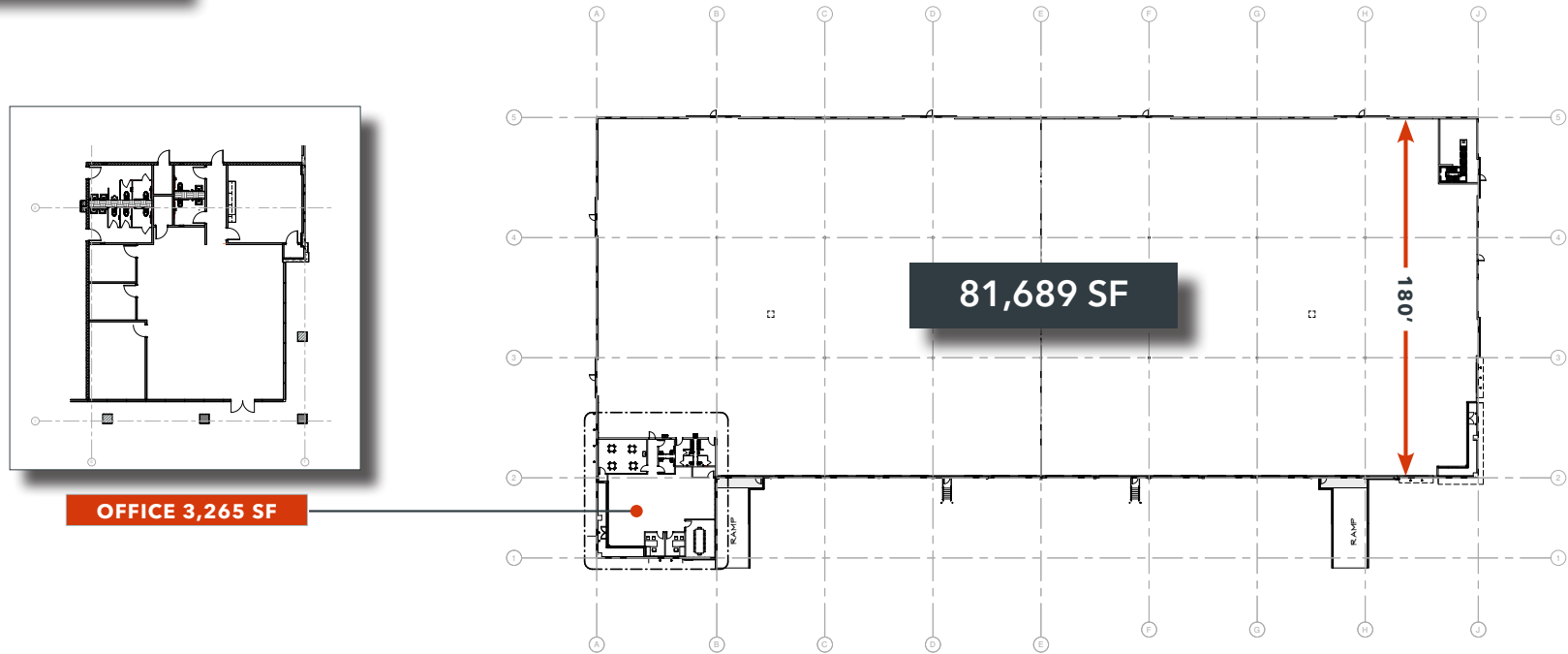
BUILDING HIGHLIGHTS

Building Size	257,598 SF
Office	3,470 SF
Clear Height	36'
Truck Court	185'
Dock Doors	49 (9' x 10')
Ramps	2 (12' x 14')

Dock Levelers	16 (40,000 LB Pit Levelers)
Car Parks	175
Trailer Parks	69
Building Depth	280'
Configuration	Rear Load
Sprinkler	ESFR

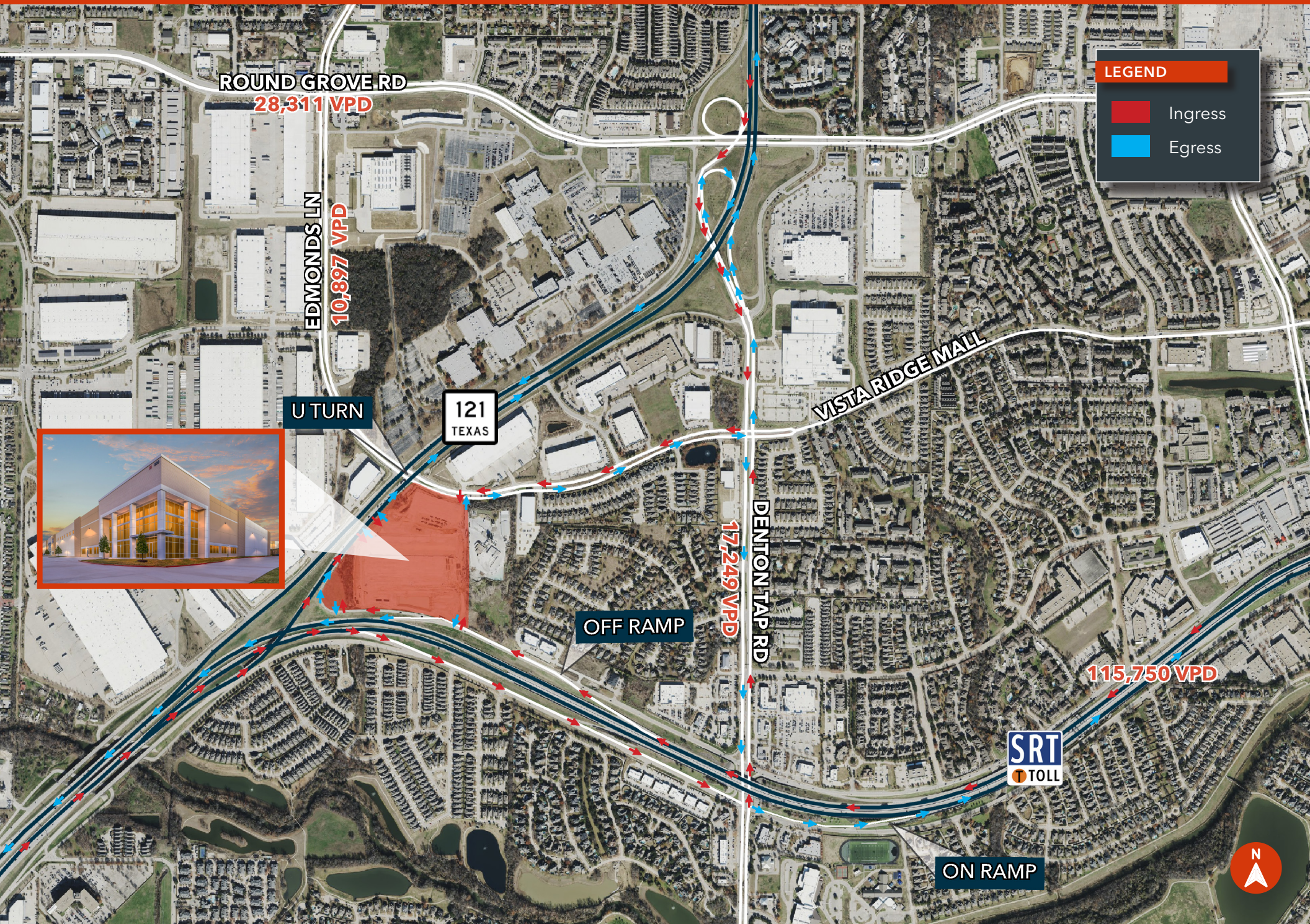


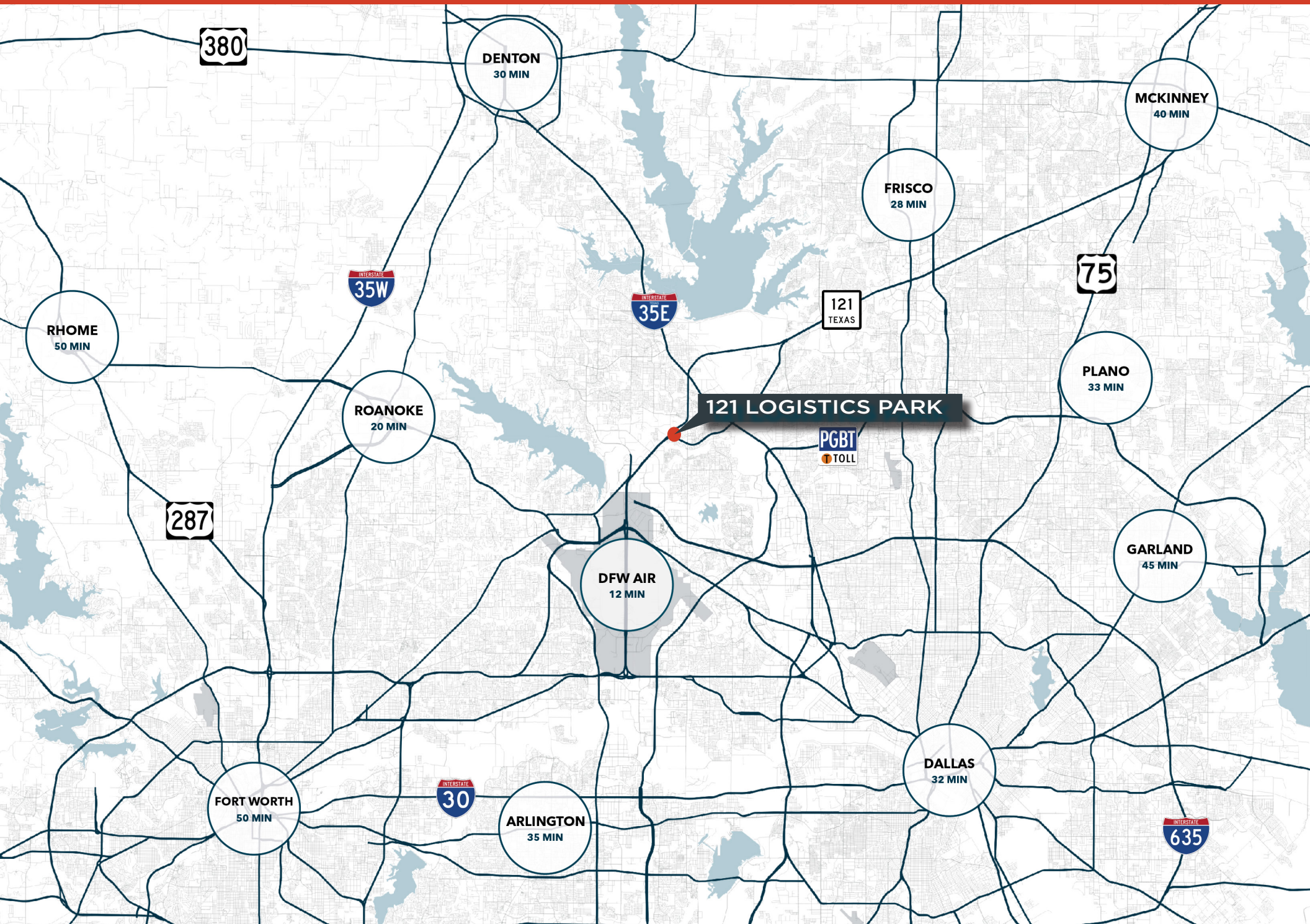
BLDG 2



BUILDING HIGHLIGHTS

Building Size	81,689 SF (Divisible to 62,243 SF)	Dock Levelers	6 (40,000 LB Pit Levelers)
Office	3,265 SF	Car Parks	55
Clear Height	32'	Trailer Parks	12
Truck Court	130' - 185'	Building Depth	180'
Dock Doors	18 (9' x 10')	Configuration	Front Load
Ramps	2 (12' x 14')	Sprinkler	ESFR





121 LOGISTICS PARK

OWNED AND DEVELOPED BY:



FOR MORE INFORMATION:



ADAM GRAHAM, SIOR, CCIM
214.335.3320
agraham@lee-associates.com

ALEX WILSON
443.370.3427
alexw@lee-associates.com

TOMAS WILSON
857.297.7000
twilson@lee-associates.com