

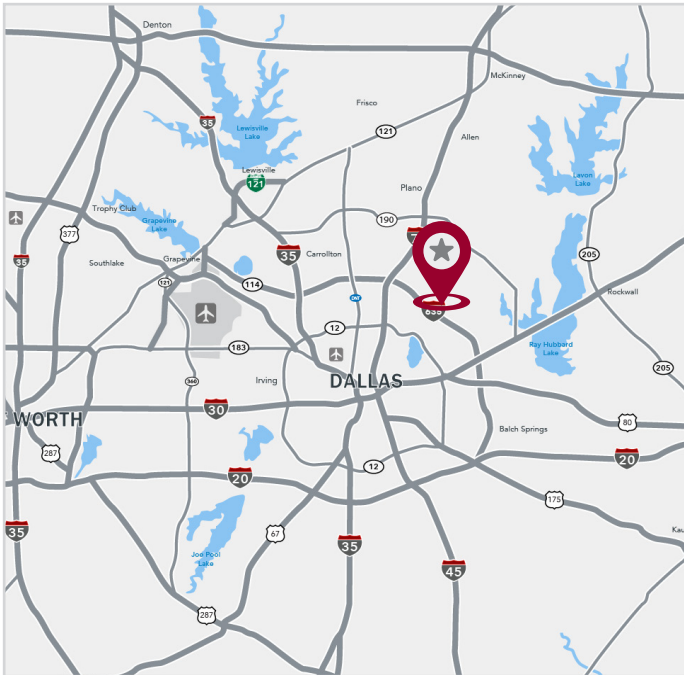
# FOR LEASE



**10840 SANDEN DR, STE B & C | DALLAS, TX 75238**

## LISTING HIGHLIGHTS

AVAILABLE SF	6,498 SF (Divisible)
DIVISIBLE TO	3,249 SF (Suite B) 3,249 SF (Suite C)
YEAR BUILT	1986
LAND SIZE	0.92 Acres
CLEAR HEIGHT	14' - 16'
LOADING	1 Grade level door per suite
COMMENTS	<ul style="list-style-type: none"><li>• High end office finish out</li><li>• Ability to lease one or both suites</li><li>• Easy access to I-635</li></ul>



FOR LEASING INFORMATION:

**Taylor Stell**

tstell@lee-associates.com  
214.558.1969

**Brett Lewis**

blewis@lee-associates.com  
972.934.4018

LISTED BY:

**LEE & ASSOCIATES**  
COMMERCIAL REAL ESTATE SERVICES

SUITE B & C - 3,249 - 6,498 SF

FOR LEASE

**Potential Floor Plan**

SUITE C  
3,249 SF

SUITE B  
3,249 SF



FOR LEASING INFORMATION:

**Taylor Stell**

tstell@lee-associates.com  
214.558.1969

**Brett Lewis**

blewis@lee-associates.com  
972.934.4018

LISTED BY:

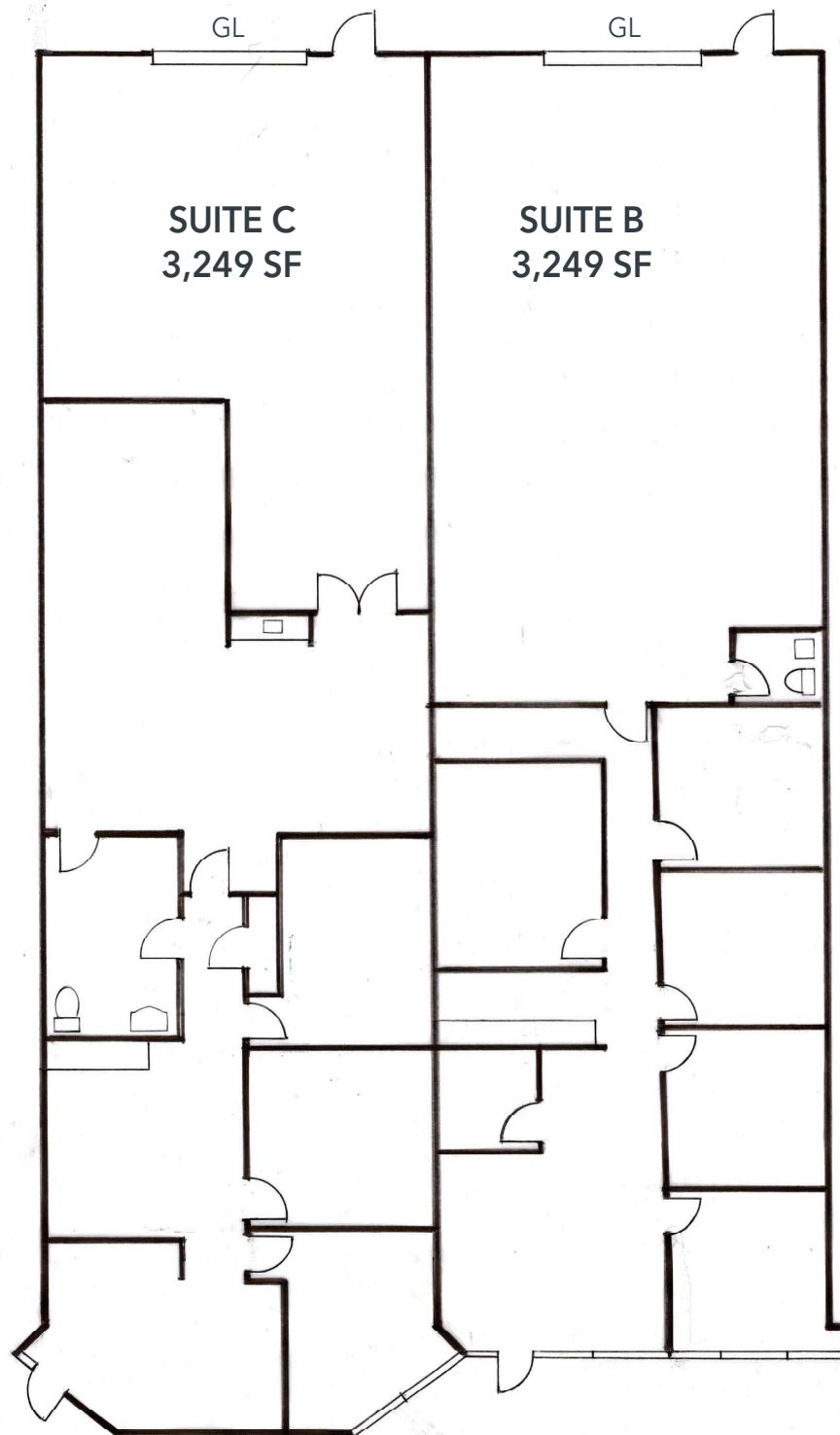
**LEE & ASSOCIATES**  
COMMERCIAL REAL ESTATE SERVICES



SUITE B & C - 3,249 - 6,498 SF

FOR LEASE

### Current Floor Plan



FOR LEASING INFORMATION:

**Taylor Stell**

tstell@lee-associates.com  
214.558.1969

**Brett Lewis**

blewis@lee-associates.com  
972.934.4018

LISTED BY:

**LEE &  
ASSOCIATES**  
COMMERCIAL REAL ESTATE SERVICES