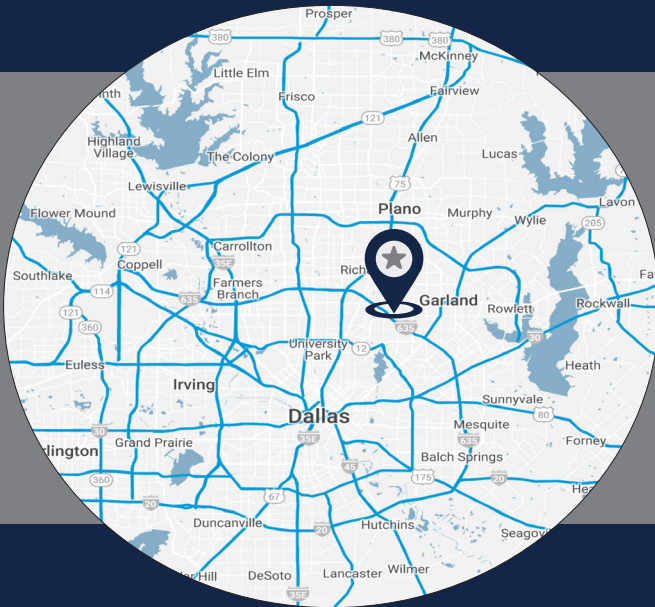


FOR LEASE



NORTHEAST DALLAS BUSINESS PARK

11110-11140 PETAL ST | DALLAS, TX 75238



LISTING HIGHLIGHTS

- | | |
|----------------------|--|
| ADDRESS: | 11110 - 11140 Petal Street |
| AVAILABLE SF: | 2,550 - 91,815 SF |
| YEAR BUILT: | 1983 |
| CLEAR HEIGHT: | 16' - 18' |
| PARKING: | 157 Concrete parking spaces |
| NOTES: | <ul style="list-style-type: none">• 4 Building project• Easy access to I-635• Distinctive landscaping and extensive lighting |

FOR LEASING INFORMATION:

Jessica Reinhardt

jreinhardt@lee-associates.com

972.934.4005

972.891.5236

Susan Cancemi

scancemi@lee-associates.com

972.934.4005

469.236.3386

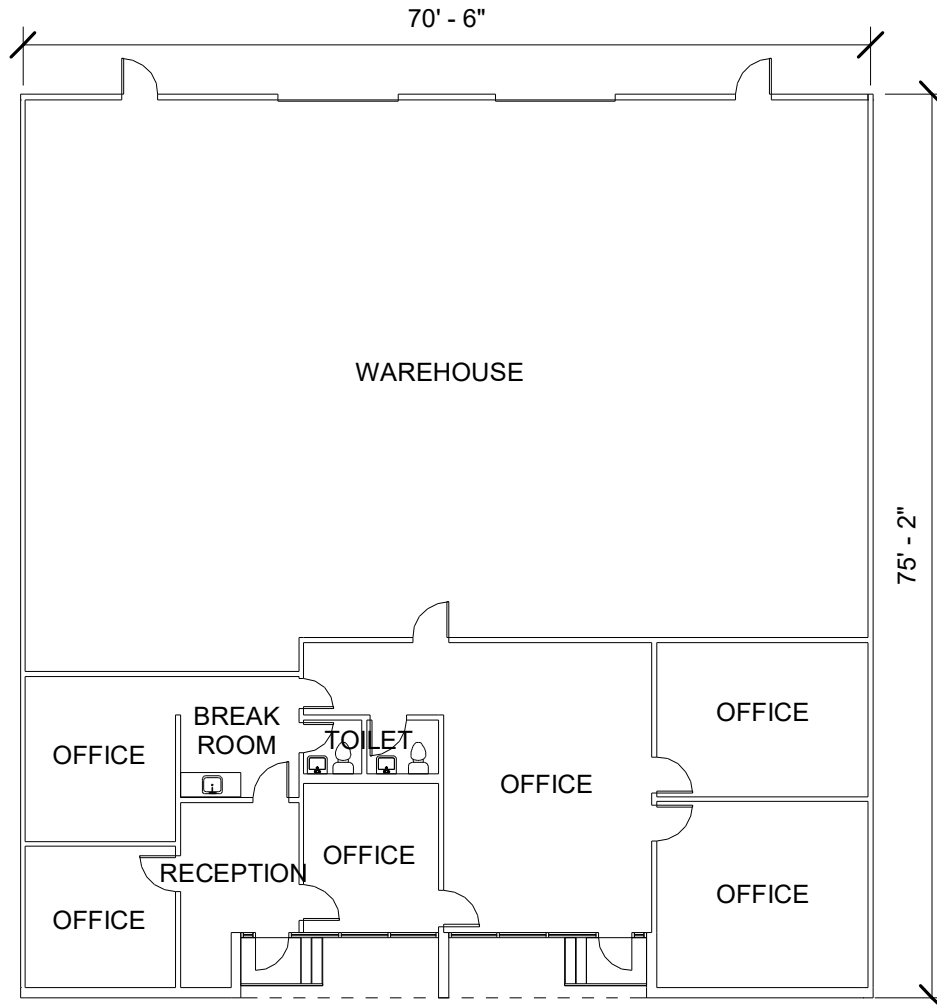
OWNED BY:



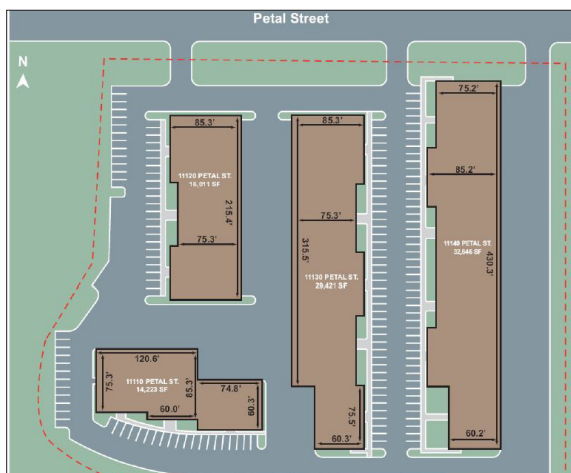
LEASED BY:



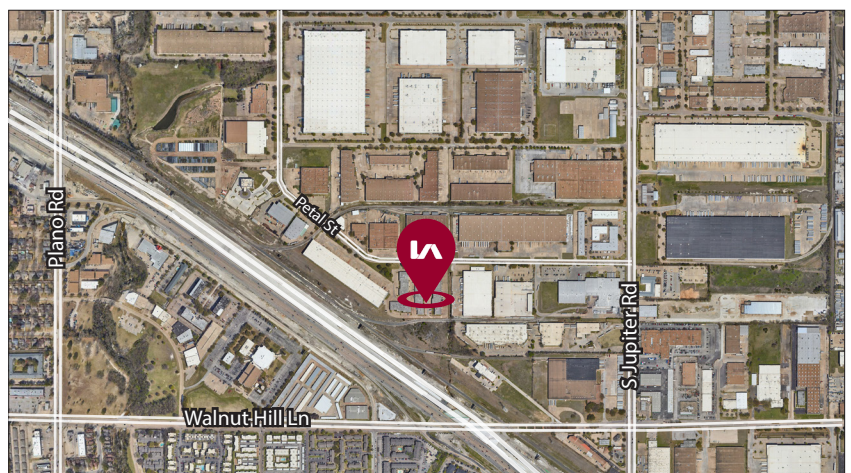
STE 500
5,250 SF



SITE PLAN



AERIAL



All information furnished regarding property for sale, rental or financing is from sources deemed reliable, but no warranty or representation is made to the accuracy thereof and same is submitted to errors, omissions, change of price, rental or other conditions prior to sale, lease or financing or withdrawal without notice. No liability of any kind is to be

Jessica Reinhardt
jreinhardt@lee-associates.com
972.934.4005
972.891.5236

Susan Cancemi
scancemi@lee-associates.com
972.934.4005
469.236.3386

OWNED BY:



LEASED BY:

