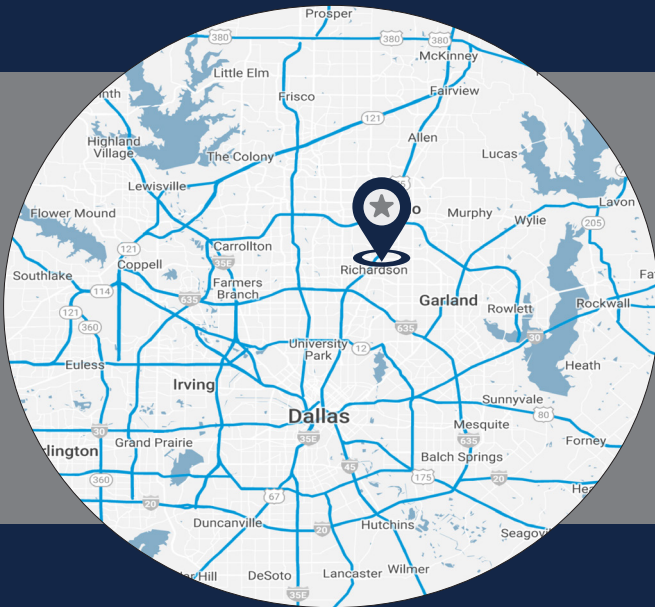


FOR LEASE



TECH CONCEPTS

903 N BOWSER RD | RICHARDSON, TX 75081



LISTING HIGHLIGHTS

ADDRESS:	903 N Bowser Rd
AVAILABLE SF:	±1,184 - 70,219 SF
YEAR BUILT:	1984
CLEAR HEIGHT:	14'
PARKING:	323 Parking spaces
NOTES:	<ul style="list-style-type: none">• 100% HVAC• Rear loading with grade level roll up doors or double doors

FOR LEASING INFORMATION:

Jessica Reinhardt
jreinhardt@lee-associates.com
972.934.4005
972.891.5236

Susan Cancemi
scancemi@lee-associates.com
972.934.4005
469.236.3386

OWNED BY:



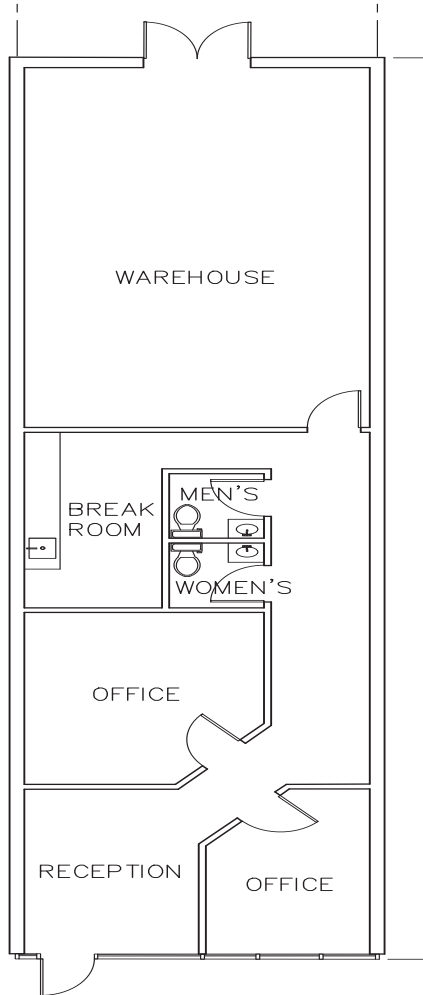
LEASED BY:



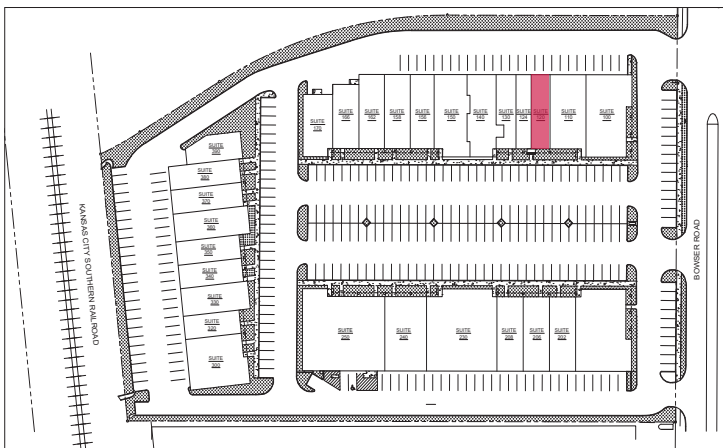
903 N BOWSER

FOR LEASE

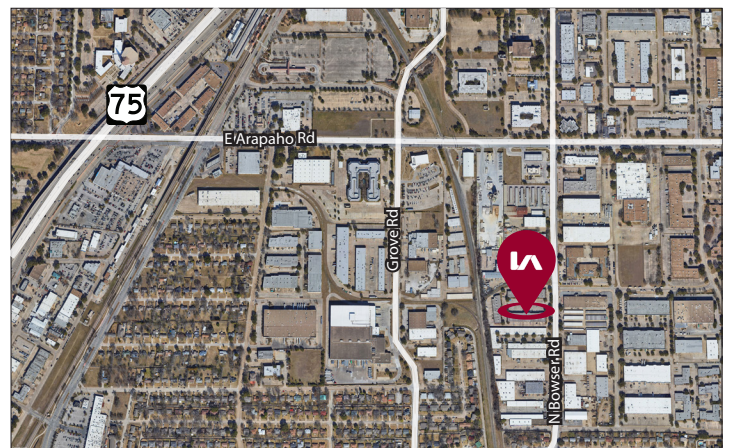
STE 120
1,480 SF



SITE PLAN



AERIAL



All information furnished regarding property for sale, rental or financing is from sources deemed reliable, but no warranty or representation is made to the accuracy thereof and same is submitted to errors, omissions, change of price, rental or other conditions prior to sale, lease or financing or withdrawal without notice. No liability of any kind is to be

Jessica Reinhardt

jreinhardt@lee-associates.com

972.934.4005

972.891.5236

Susan Cancemi

scancemi@lee-associates.com

972.934.4005

469.236.3386

OWNED BY:



LEASED BY:

