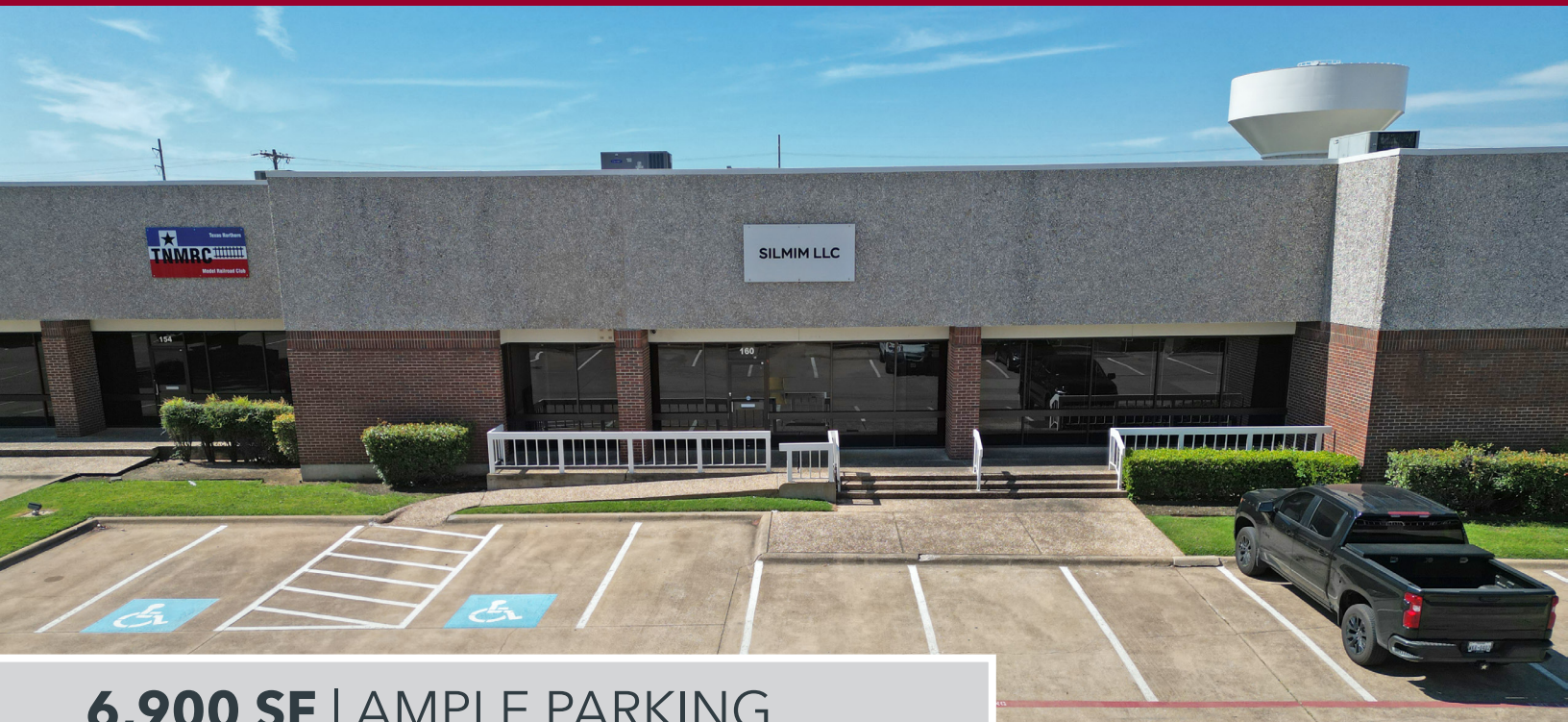


# FOR SUBLEASE

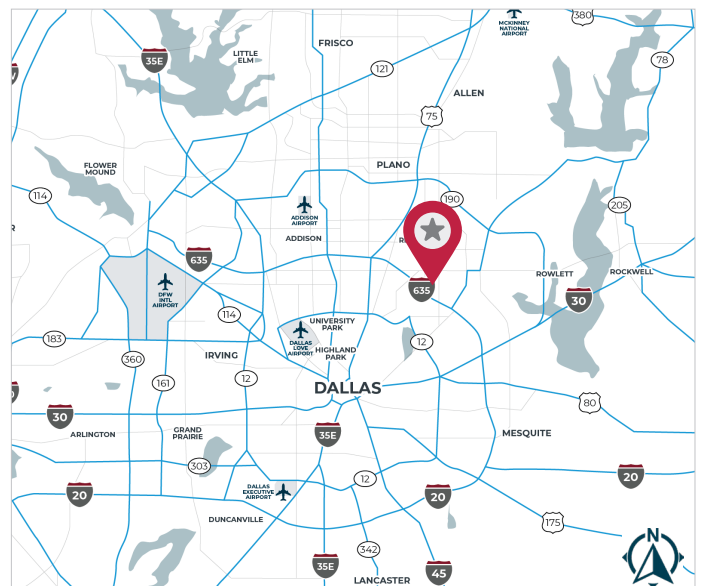
**11999 Plano Rd** | Dallas, TX 75243



**6,900 SF** | AMPLE PARKING

## AVAILABILITY HIGHLIGHTS

<b>Available:</b>	6,900 SF
<b>Office:</b>	±1,440 SF
<b>Clear Height:</b>	±16'
<b>Year Built:</b>	1983
<b>Dock Doors:</b>	2 Dock high
<b>Sprinkler System:</b>	None
<b>Comments:</b>	Ample Parking Professionally Landscaped Easy Access to I-635, US-75 & President George Bush Turnpike



FOR MORE INFORMATION:

**ALLY TANGHONGS**

972.934.4006

atanghongs@lee-associates.com

**TAYLOR STELL**

214.558.1969

tstell@lee-associates.com

LEASED BY:

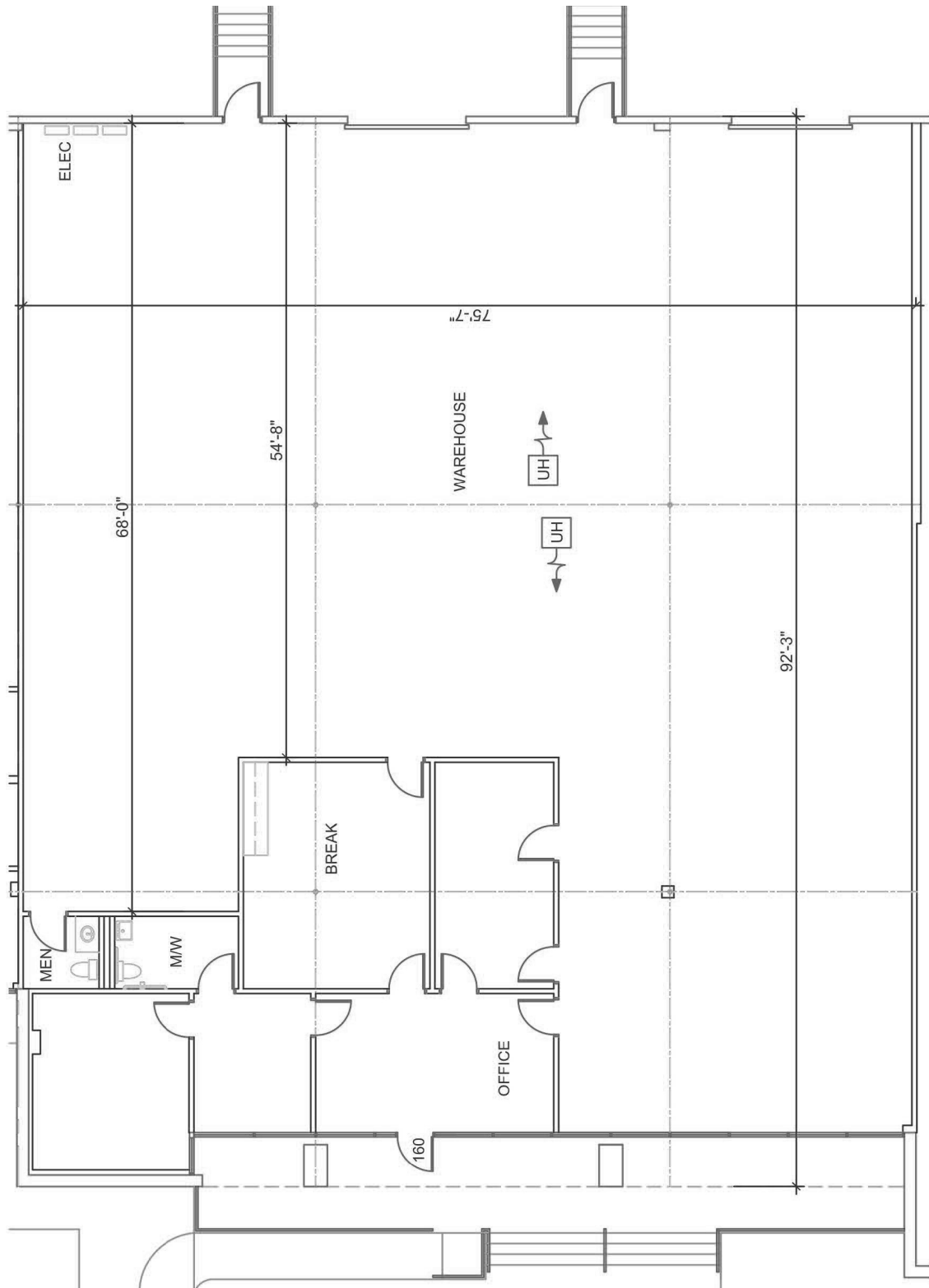
**LEE & ASSOCIATES**

COMMERCIAL REAL ESTATE SERVICES

leedallas.com

# FOR SUBLEASE

11999 PLANO RD, STE 160  
DALLAS, TX 75243



All information furnished regarding property for sale, rental or financing is from sources deemed reliable, but no warranty or representation is made to the accuracy thereof and same is submitted to errors, omissions, change of price, rental or other conditions prior to sale, lease or financing or withdrawal without notice. No liability of any kind is to be imposed on the broker herein.

FOR MORE INFORMATION:

**ALLY TANGHONGS**

972.934.4006

atanghongs@lee-associates.com

**TAYLOR STELL**

214.558.1969

tstell@lee-associates.com

LEASED BY:

**LEE & ASSOCIATES**  
COMMERCIAL REAL ESTATE SERVICES  
[leedallas.com](http://leedallas.com)