

FOR LEASE



NORTHEAST DALLAS BUSINESS PARK

11110-11140 PETAL ST | DALLAS, TX 75238



LISTING HIGHLIGHTS

ADDRESS:	11110 - 11140 Petal Street
AVAILABLE SF:	2,550 - 91,815 SF
YEAR BUILT:	1983
CLEAR HEIGHT:	16' - 18'
PARKING:	157 Concrete parking spaces
NOTES:	<ul style="list-style-type: none">• 4 Building project• Easy access to I-635• Distinctive landscaping and extensive lighting

FOR LEASING INFORMATION:

Jessica Reinhardt

jreinhardt@lee-associates.com

972.934.4005

972.891.5236

Susan Cancemi

scancemi@lee-associates.com

972.934.4005

469.236.3386

OWNED BY:



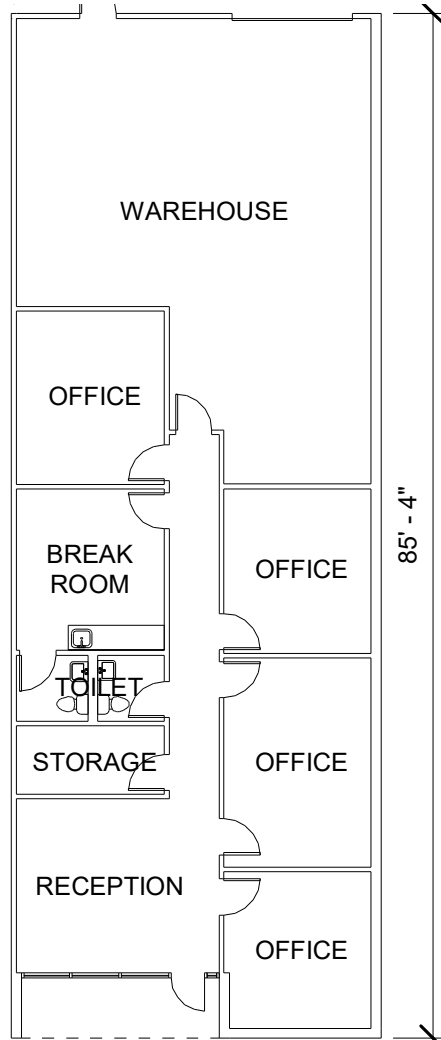
LEASED BY:



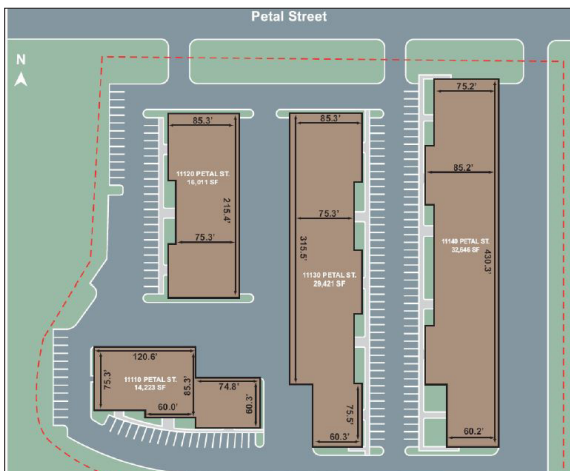
11120 PETAL ST

FOR LEASE

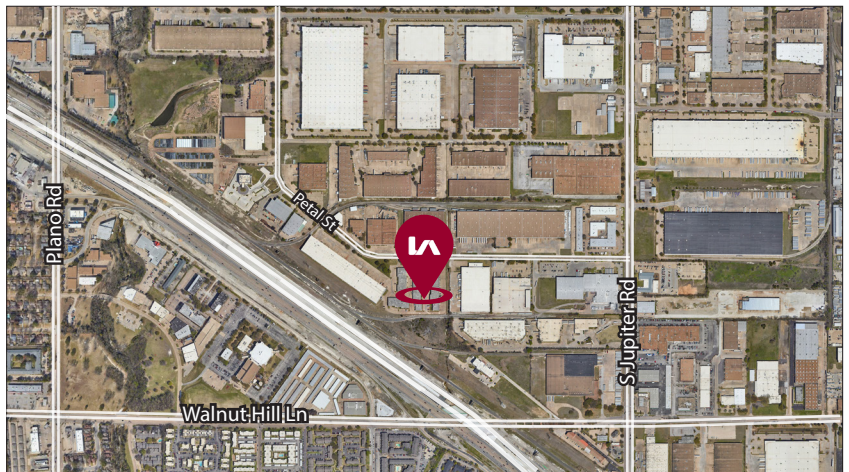
STE 500
2,541 SF



SITE PLAN



AERIAL



All information furnished regarding property for sale, rental or financing is from sources deemed reliable, but no warranty or representation is made to the accuracy thereof and same is submitted to errors, omissions, change of price, rental or other conditions prior to sale, lease or financing or withdrawal without notice. No liability of any kind is to be imposed on the broker herein.

Jessica Reinhardt

jreinhardt@lee-associates.com

972.934.4005

972.891.5236

Susan Cancemi

scancemi@lee-associates.com

972.934.4005

469.236.3386

OWNED BY:



LEASED BY:

