

FOR SALE OR LEASE

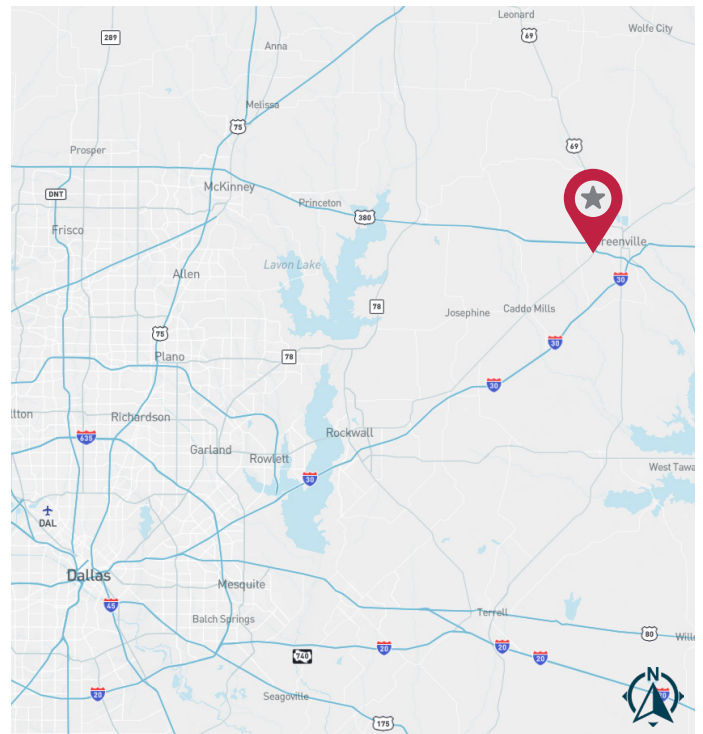
4618 Ed Rutherford Road | Greenville, TX 75402



HUNT COUNTY INDUSTRIAL BUILDING ±6,214 SF

PROPERTY HIGHLIGHTS

- ±6,214 SF Industrial Building
- ±861 SF Office
- 24' Clear Height
- Two (2) 16' Grade-Level Doors
- 408 - 3 Phase Power
- Industrial Sink in Warehouse
- Exterior Wash Bay with Floor Drains
- Fenced Outside Storage with Gravel Lot
- Built 1990
- Steel Panel Construction
- ±1.927 Acres
- Hunt County Submarket



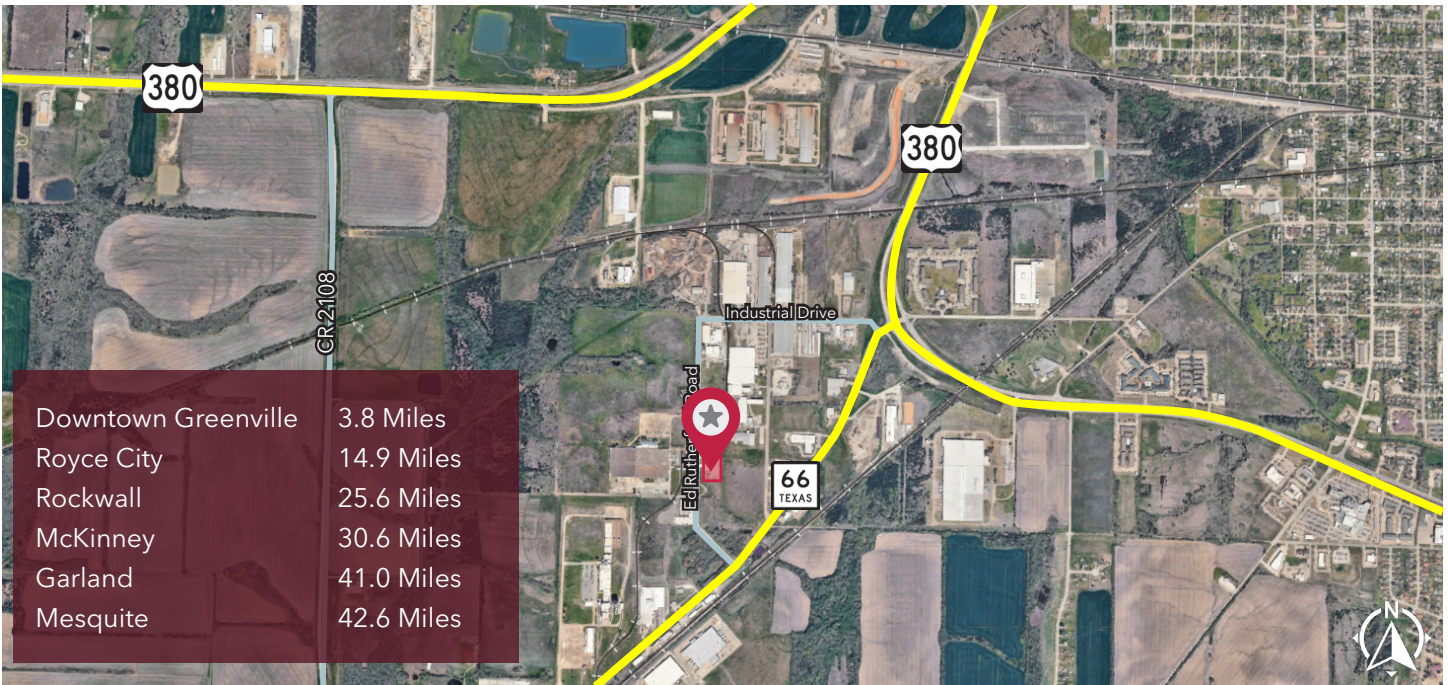
FOR MORE INFORMATION:

NATHAN DENTON, SIOR
214.228.0611
ndenton@lee-associates.com

REID BASSINGER, SIOR
214.208.3194
rbassinger@lee-associates.com

LEE & ASSOCIATES
COMMERCIAL REAL ESTATE SERVICES
leedallas.com

AERIAL MAPS



All information furnished regarding property for sale, rental or financing is from sources deemed reliable, but no warranty or representation is made to the accuracy thereof and same is submitted to errors, omissions, change of price, rental or other conditions prior to sale, lease or financing or withdrawal without notice. No liability of any kind is to be imposed on the broker herein.

FOR MORE INFORMATION:

NATHAN DENTON, SIOR
214.228.0611
ndenton@lee-associates.com

REID BASSINGER, SIOR
214.208.3194
rbassinger@lee-associates.com

LEE & ASSOCIATES
COMMERCIAL REAL ESTATE SERVICES
leedallas.com

FOR SALE OR LEASE

HUNT COUNTY INDUSTRIAL BUILDING

PROPERTY IMAGES



All information furnished regarding property for sale, rental or financing is from sources deemed reliable, but no warranty or representation is made to the accuracy thereof and same is submitted to errors, omissions, change of price, rental or other conditions prior to sale, lease or financing or withdrawal without notice. No liability of any kind is to be imposed on the broker herein.

FOR MORE INFORMATION:

NATHAN DENTON, SIOR
214.228.0611
ndenton@lee-associates.com

REID BASSINGER, SIOR
214.208.3194
rbassinger@lee-associates.com

LEE & ASSOCIATES
COMMERCIAL REAL ESTATE SERVICES
leedallas.com