

FOR LEASE

6,850 SF



1240 TEXAN TRAIL, SUITE 103

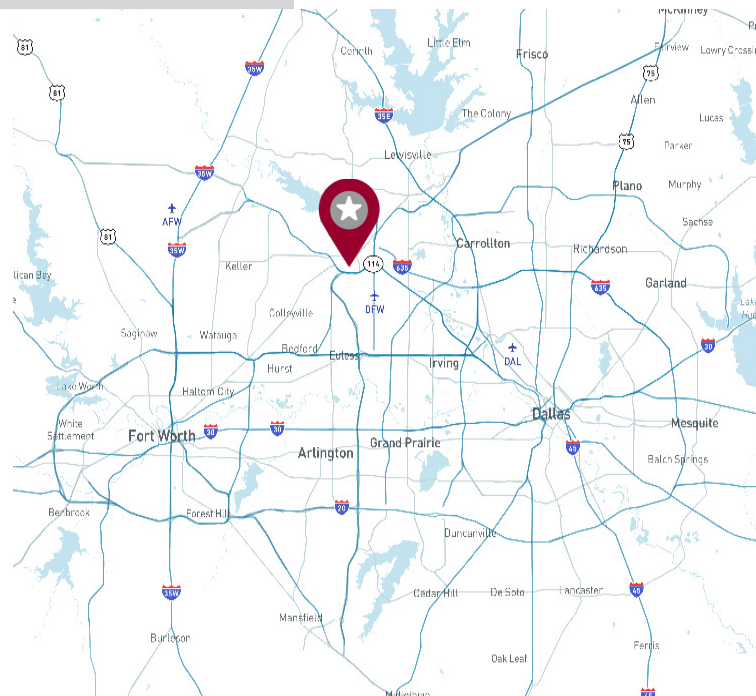
GRAPEVINE, TX 76051

AVAILABILITY HIGHLIGHTS

- 6,850 SF
- Approximately 1,500 SF Office
- 6 Dock High Doors, 1 Ramp
- 16' Clear Height
- Available 7/1/26

ECONOMICS

Contact Broker for Pricing; OPEX \$2.14/psf



FOR LEASING INFORMATION:

Chris Hillman
214.797.2451
chillman@lee-associates.com

Phil Rosenfeld
469.222.4159
prosenfeld@lee-associates.com

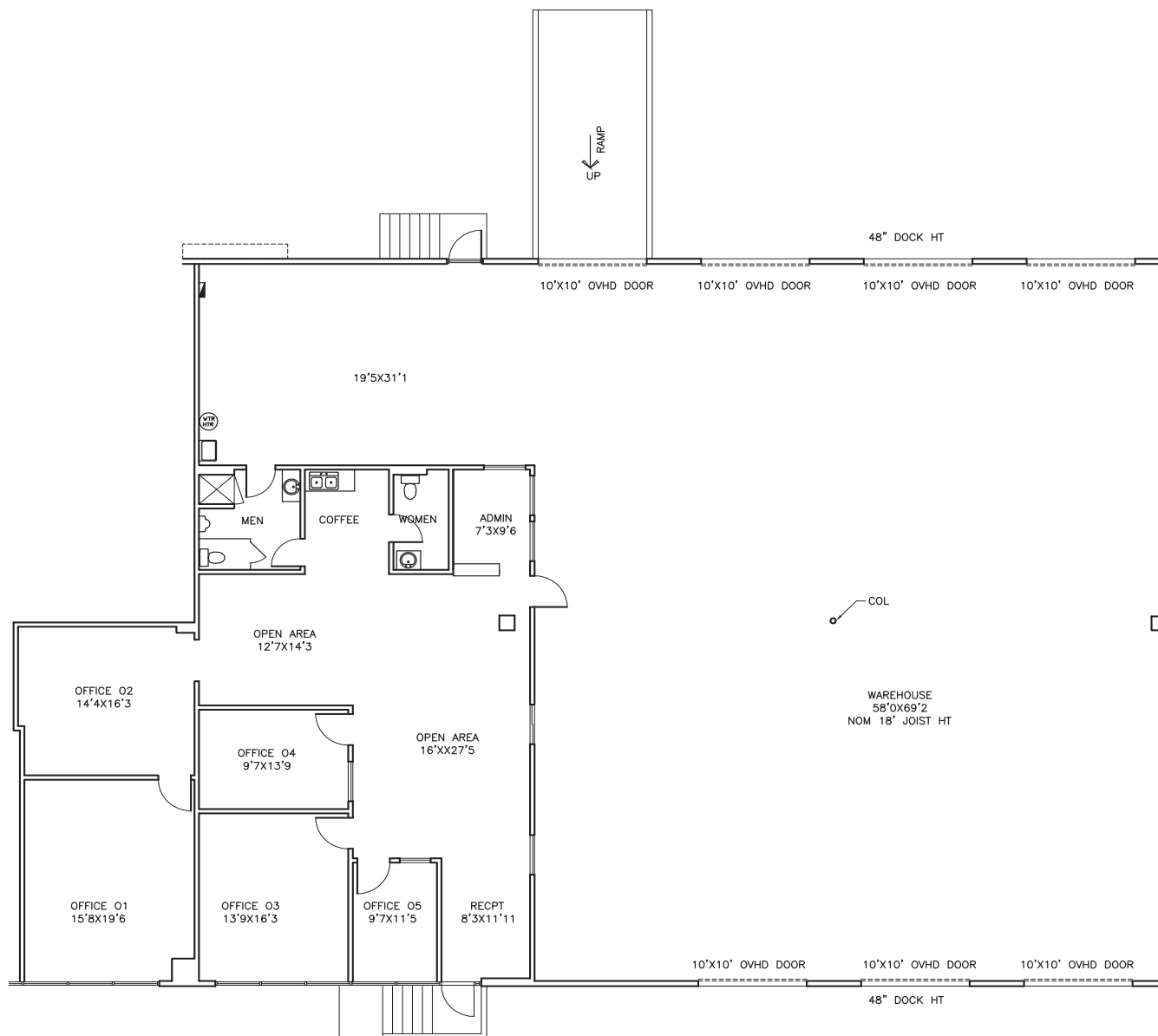
LEE & ASSOCIATES
COMMERCIAL REAL ESTATE SERVICES

leedallas.com

6,850 SF

FOR LEASE

FLOOR PLAN



All information furnished regarding property for sale, rental or financing is from sources deemed reliable, but no warranty or representation is made to the accuracy thereof and same is submitted to errors, omissions, change of price, rental or other conditions prior to sale, lease or financing or withdrawal without notice. No liability of any kind is to be imposed on the broker herein.

FOR LEASING INFORMATION:

Chris Hillman
214.797.2451
chillman@lee-associates.com

Phil Rosenfeld
469.222.4159
prosenfeld@lee-associates.com