

# FOR LEASE

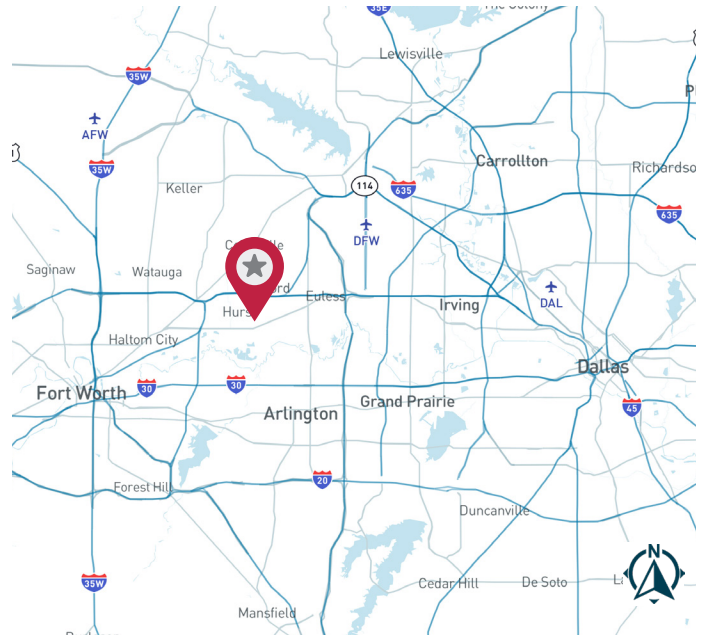
**1101 Arwine Ct** | Suite 100 | Euless, TX 76040



ARWINE BUSINESS PARK  
**±1,180 SF**

## AVAILABILITY HIGHLIGHTS

- ±1,180 SF Office Space
- 4 Offices
- Reception Area and Hall
- 1 Restroom
- Great parking spaces
- 20 minutes to DFW Airport
- 30 minutes to Love Field Airport
- \$10.00/psf Gross



FOR MORE INFORMATION:

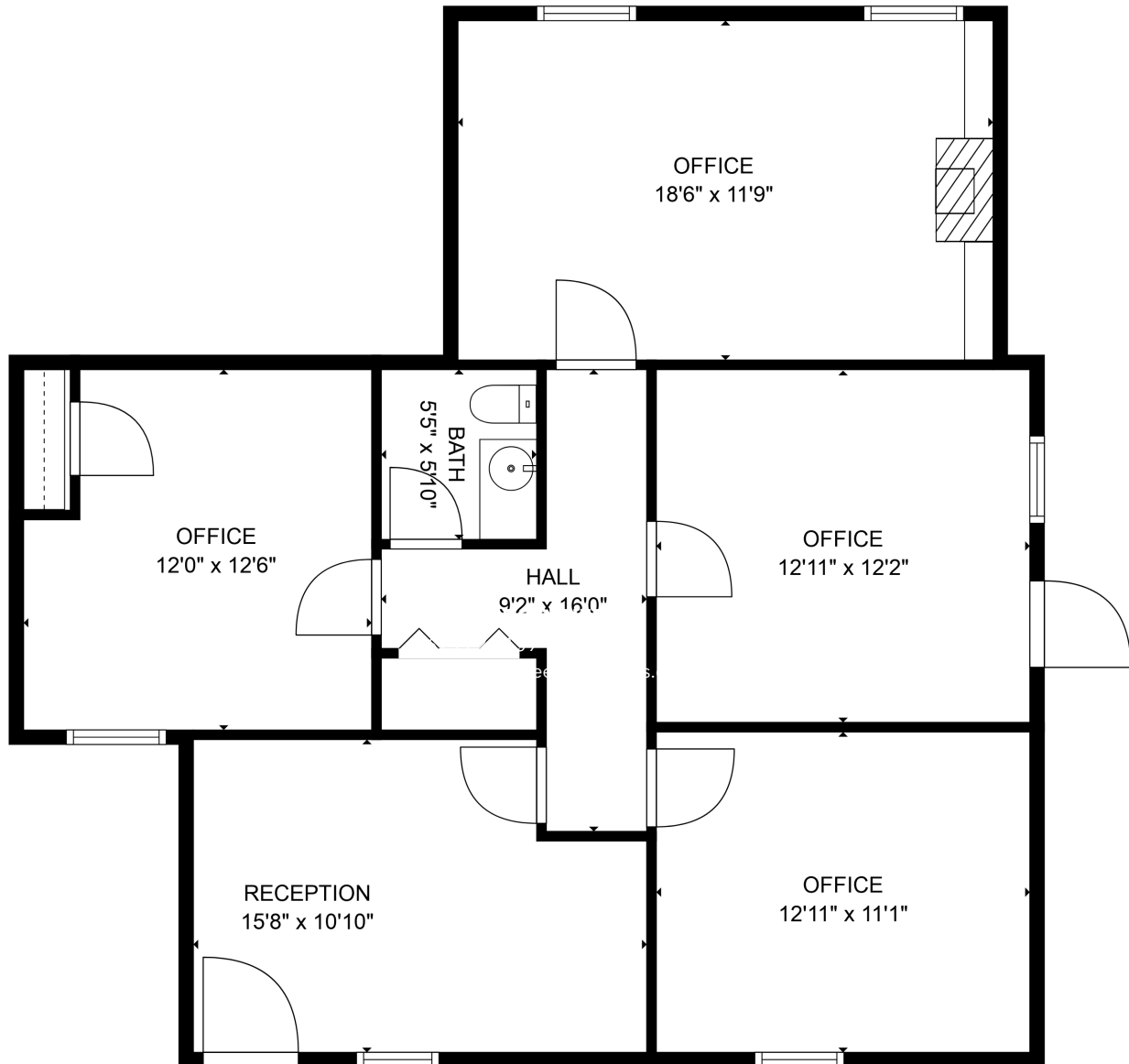
**PHILLIP ROSENFELD**

469.222.4159

[prosenfeld@lee-associates.com](mailto:prosenfeld@lee-associates.com)

**LEE & ASSOCIATES**  
COMMERCIAL REAL ESTATE SERVICES  
[leedallas.com](http://leedallas.com)

## FLOOR PLAN



**1,180 SQ FT**

All information furnished regarding property for sale, rental or financing is from sources deemed reliable, but no warranty or representation is made to the accuracy thereof and same is submitted to errors, omissions, change of price, rental or other conditions prior to sale, lease or financing or withdrawal without notice. No liability of any kind is to be imposed on the broker herein.

FOR MORE INFORMATION:

**PHILLIP ROSENFELD**

469.222.4159

[prosenfeld@lee-associates.com](mailto:prosenfeld@lee-associates.com)