

# FOR LEASE

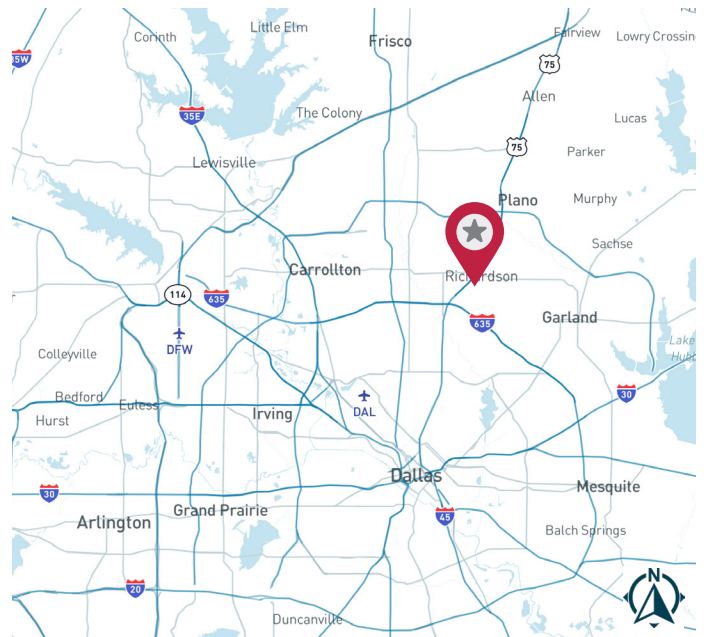
**903 N Bowser Road, Suite 340 | Richardson, TX 75081**



Tech Concepts  
**±1,632 SF**

## AVAILABILITY HIGHLIGHTS

- ±1,632 SF Available Space
- Built in 1984
- 14' Clear Height
- 100% HVAC
- Rear Loading with Grade Level Double Doors



FOR MORE INFORMATION:

**JESSICA REINHARDT**  
972.934.4005  
jreinhardt@lee-associates.com

**SUSAN CANCEMI**  
972.934.4005  
scancemi@lee-associates.com

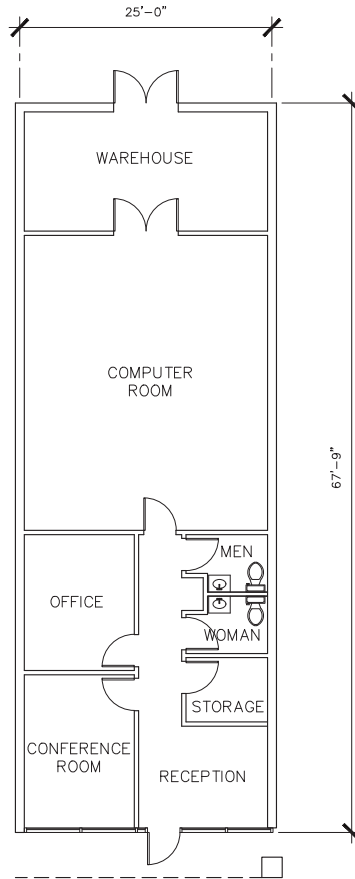
MANAGED BY:

**CIP REAL ESTATE**

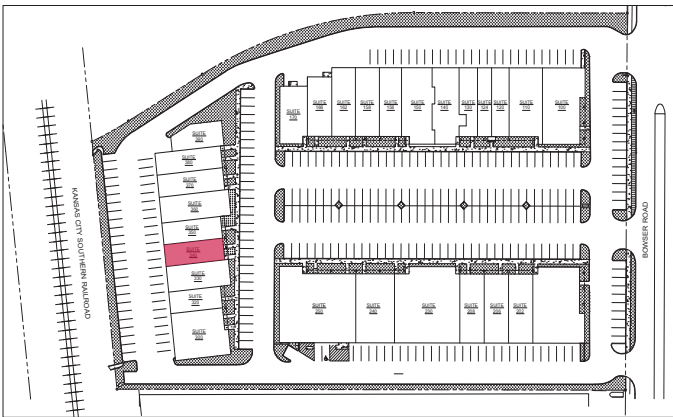
**LEE & ASSOCIATES**  
COMMERCIAL REAL ESTATE SERVICES  
[leedallas.com](http://leedallas.com)

## FLOOR PLAN

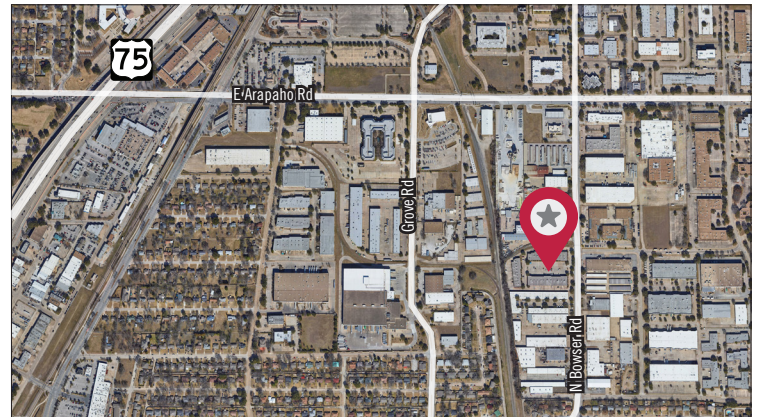
**STE 340**  
± 1,632 SF



## SITE PLAN



## AERIAL



All information furnished regarding property for sale, rental or financing is from sources deemed reliable, but no warranty or representation is made to the accuracy thereof and same is submitted to errors, omissions, change of price, rental or other conditions prior to sale, lease or financing or withdrawal without notice. No liability of any kind is to be imposed on the broker herein.

FOR MORE INFORMATION:

**JESSICA REINHARDT**  
972.934.4005  
jreinhardt@lee-associates.com

**SUSAN CANCEMI**  
972.934.4005  
scancemi@lee-associates.com

MANAGED BY:

**CIP REAL ESTATE**

**LEE & ASSOCIATES**  
COMMERCIAL REAL ESTATE SERVICES  
[leedallas.com](http://leedallas.com)