

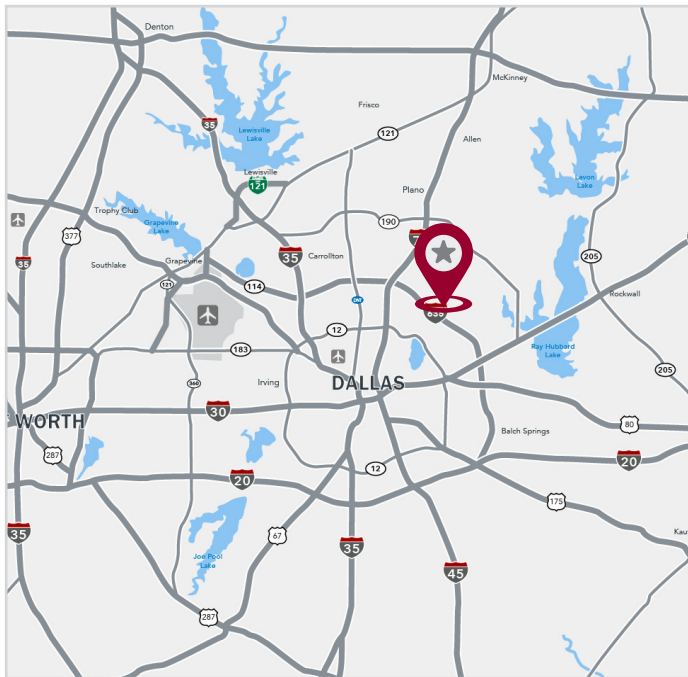
FOR LEASE



10840 SANDEN DR, STE C | DALLAS, TX 75238

LISTING HIGHLIGHTS

AVAILABLE SF	3,249 SF
YEAR BUILT	1986
LAND SIZE	0.92 Acres
CLEAR HEIGHT	14' - 16'
LOADING	1 Grade level door
COMMENTS	<ul style="list-style-type: none">• High end office finish out• Easy access to I-635



FOR LEASING INFORMATION:

Taylor Stell

tstell@lee-associates.com
214.558.1969

Brett Lewis

blewis@lee-associates.com
972.934.4018

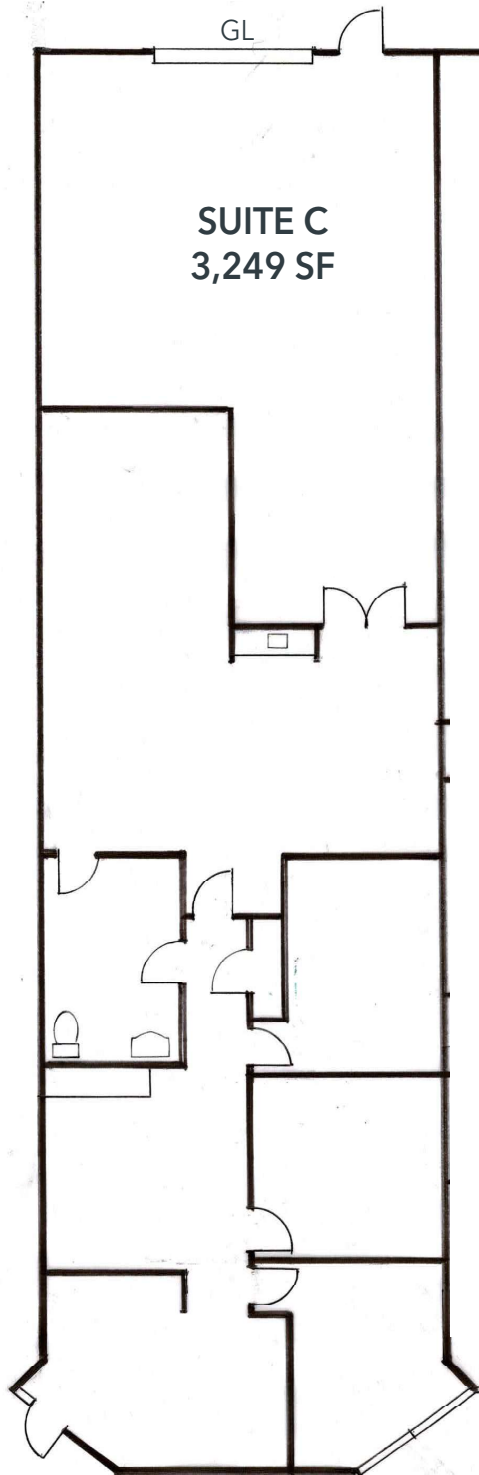
LISTED BY:

 **LEE &
ASSOCIATES**
COMMERCIAL REAL ESTATE SERVICES

SUITE C - 3,249 SF

FOR LEASE

Current Floor Plan



FOR LEASING INFORMATION:

Taylor Stell
tstell@lee-associates.com
214.558.1969

Brett Lewis
blewis@lee-associates.com
972.934.4018

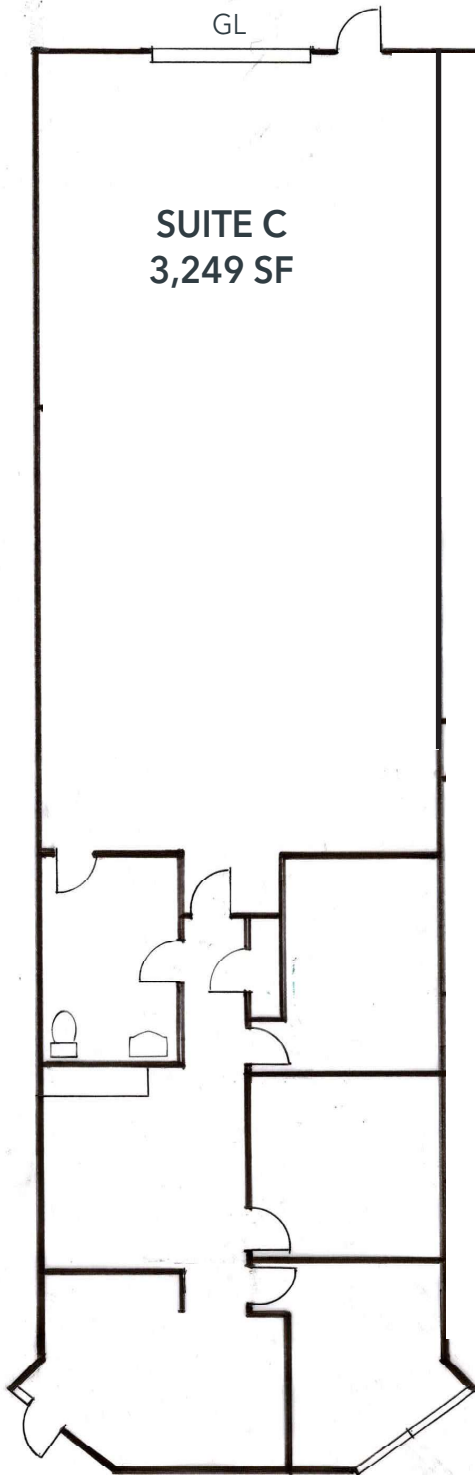
LISTED BY:

 **LEE & ASSOCIATES**
COMMERCIAL REAL ESTATE SERVICES

SUITE C - 3,249 SF

FOR LEASE

Potential Floor Plan



FOR LEASING INFORMATION:

Taylor Stell

tstell@lee-associates.com
214.558.1969

Brett Lewis

blewis@lee-associates.com
972.934.4018

LISTED BY:

 **LEE & ASSOCIATES**
COMMERCIAL REAL ESTATE SERVICES