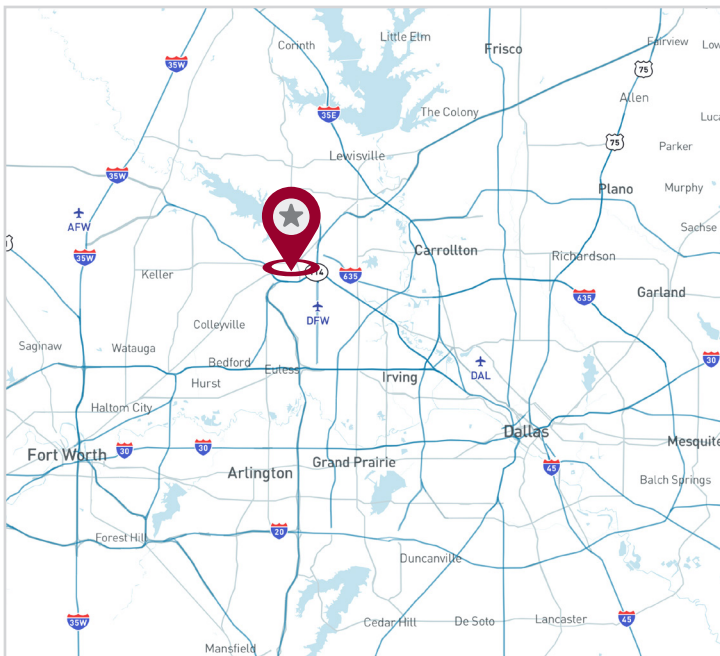


FOR LEASE

4,100 SF | FREIGHT FORWARDING WAREHOUSE



1102 E DALLAS RD, SUITE 255
Grapevine, TX 76051



AVAILABILITY HIGHLIGHTS

- 4,100 SF Total
- ±700 SF Office
- 7 Dock High Doors
- 22'4" Clear Height
- New Make-Ready in Office
- Call Broker for Rental Rate

FOR LEASING INFORMATION:

Chris Hillman
Director

chillman@lee-associates.com
972.934.4004

Adam Graham, SIOR, CCIM
Principal

agraham@lee-associates.com
972.934.4011

LEASING:

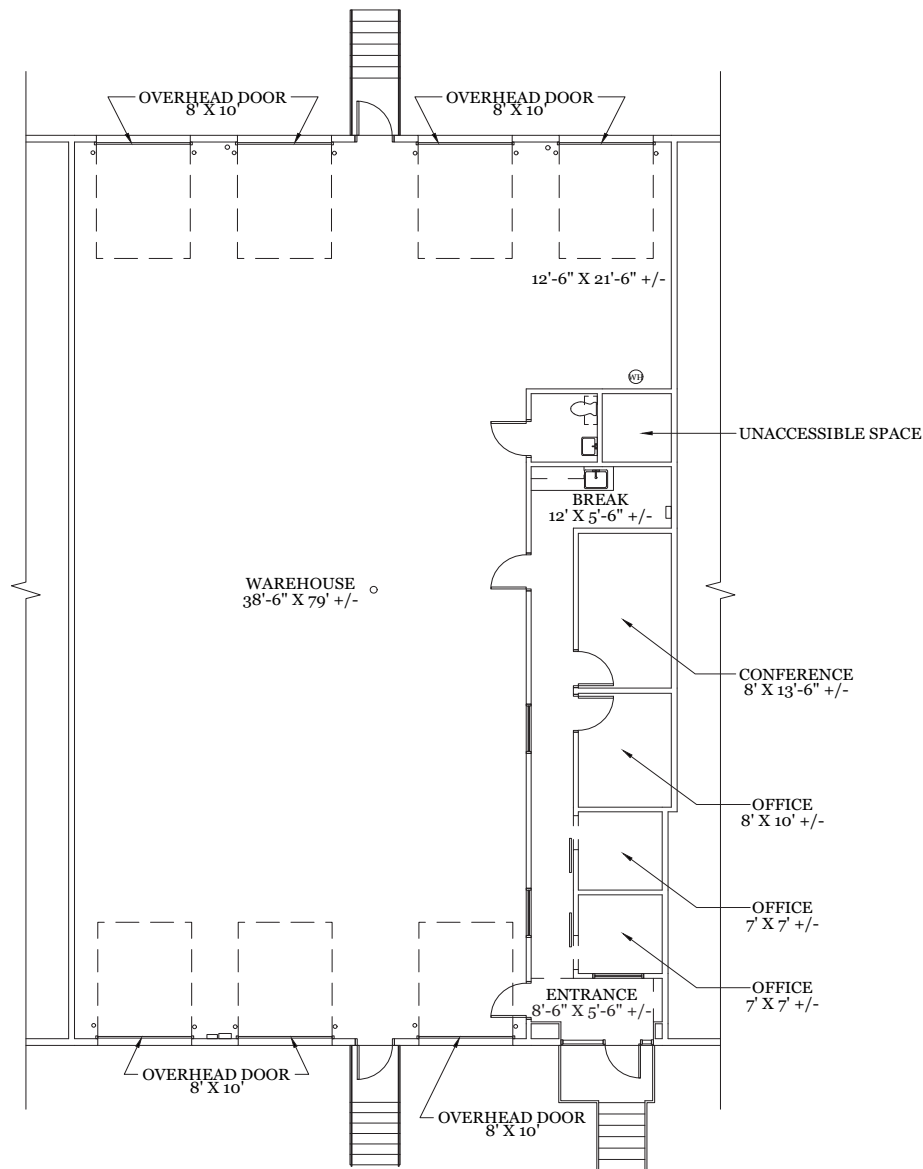
LEE & ASSOCIATES
COMMERCIAL REAL ESTATE SERVICES

4,100 SF

FOR LEASE

SITE PLAN

OFFICE SF	±700 SF
WAREHOUSE SF	3,400 SF
TOTAL SF	4,100 SF



All information furnished regarding property for sale, rental or financing is from sources deemed reliable, but no warranty or representation is made to the accuracy thereof and same is submitted to errors, omissions, change of price, rental or other conditions prior to sale, lease or financing or withdrawal without notice. No liability of any kind is to be imposed on the broker herein.

FOR LEASING INFORMATION:

Chris Hillman
Director

chillman@lee-associates.com
972.934.4004

Adam Graham, SIOR, CCIM
Principal

agraham@lee-associates.com
972.934.4011

LEASING:

LEE & ASSOCIATES
COMMERCIAL REAL ESTATE SERVICES