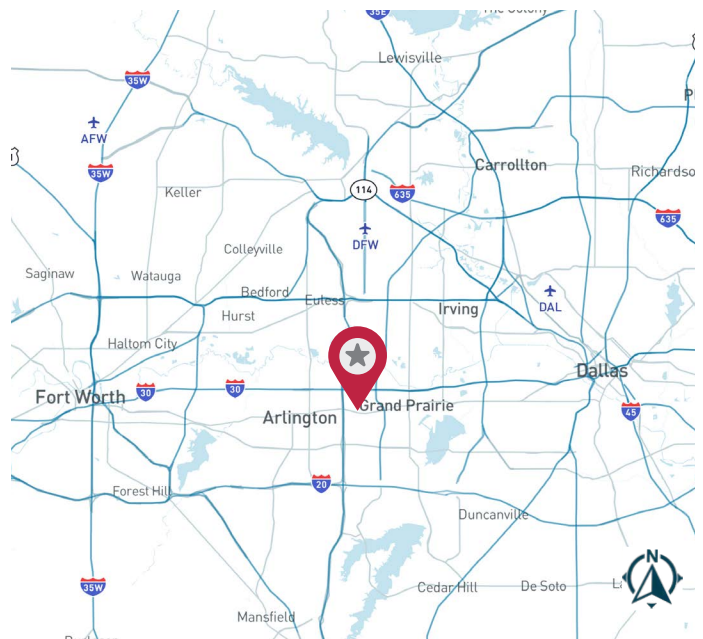


3440 Dalworth Street | Arlington, TX 76011



- ±5,000 SF
- ±960 SF Office
- ±4,040 SF Warehouse
- 16' Clear Height
- 1 Dock High Door
- Available 3/1/26
- Call Broker for Rate / OPEX \$1.97

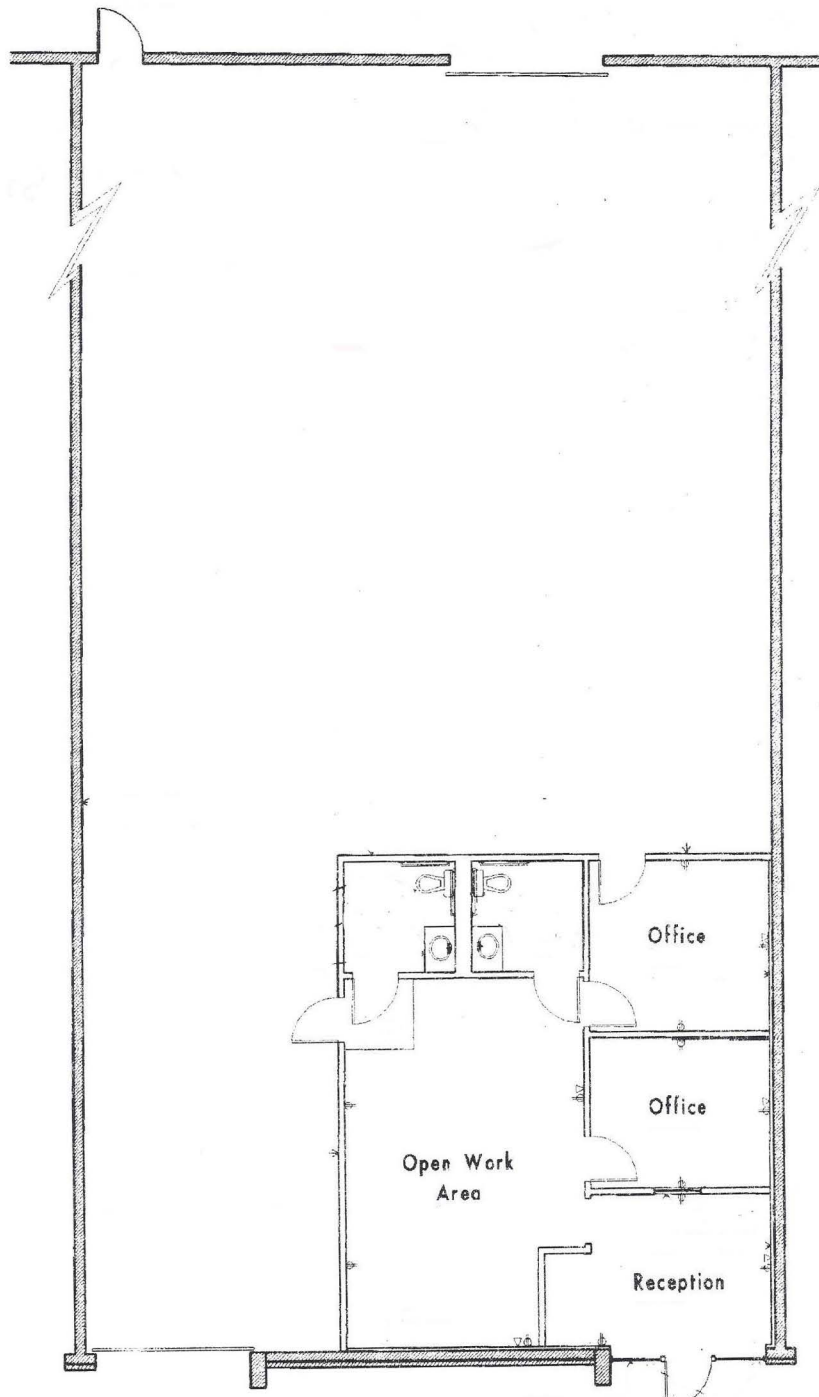


PHIL ROSENFELD | Principal
469.222.4159
prosenfeld@lee-associates.com

LEE & ASSOCIATES
COMMERCIAL REAL ESTATE SERVICES
leedallas.com

FLOOR PLAN

Total SF: 5,000
Warehouse: ±4,040
Office: ±960



All information furnished regarding property for sale, rental or financing is from sources deemed reliable, but no warranty or representation is made to the accuracy thereof and same is submitted to errors, omissions, change of price, rental or other conditions prior to sale, lease or financing or withdrawal without notice. No liability of any kind is to be imposed on the broker herein.

FOR MORE INFORMATION:

PHIL ROSENFELD | Principal
469.222.4159
prosenfeld@lee-associates.com

LEE & ASSOCIATES
COMMERCIAL REAL ESTATE SERVICES
leedallas.com