

FOR SUBLEASE

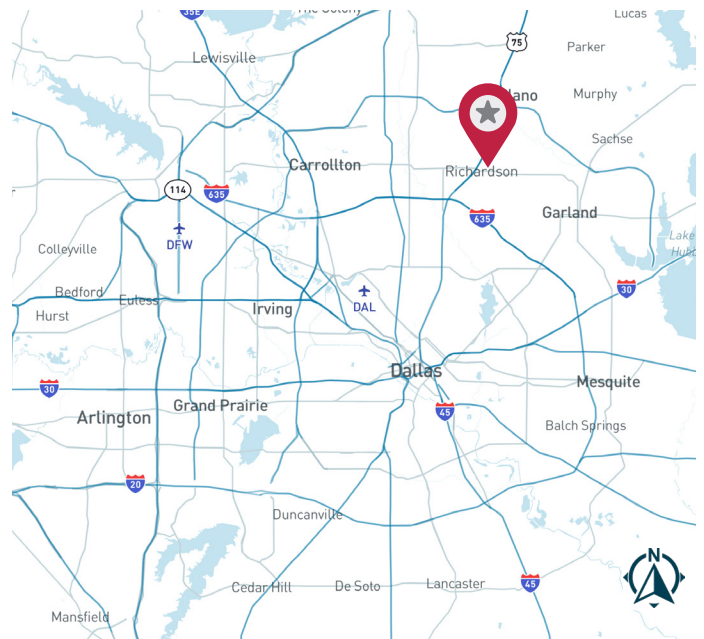
1771 International Parkway, Suite 121 | Richardson, TX 75081



Renaissance Tech Center
±4,020 SF

AVAILABILITY HIGHLIGHTS

- ±4,020 SF Available Space
- Sublease Expiration: November 30, 2026
- Built in 1984
- 14' Clear Height
- Centrally located between Campbell Road & Arapaho Road
- Rear Single Personnel Door



FOR MORE INFORMATION:

JESSICA REINHARDT
972.934.4005
jreinhardt@lee-associates.com

SUSAN CANCEMI
972.934.4005
scancemi@lee-associates.com

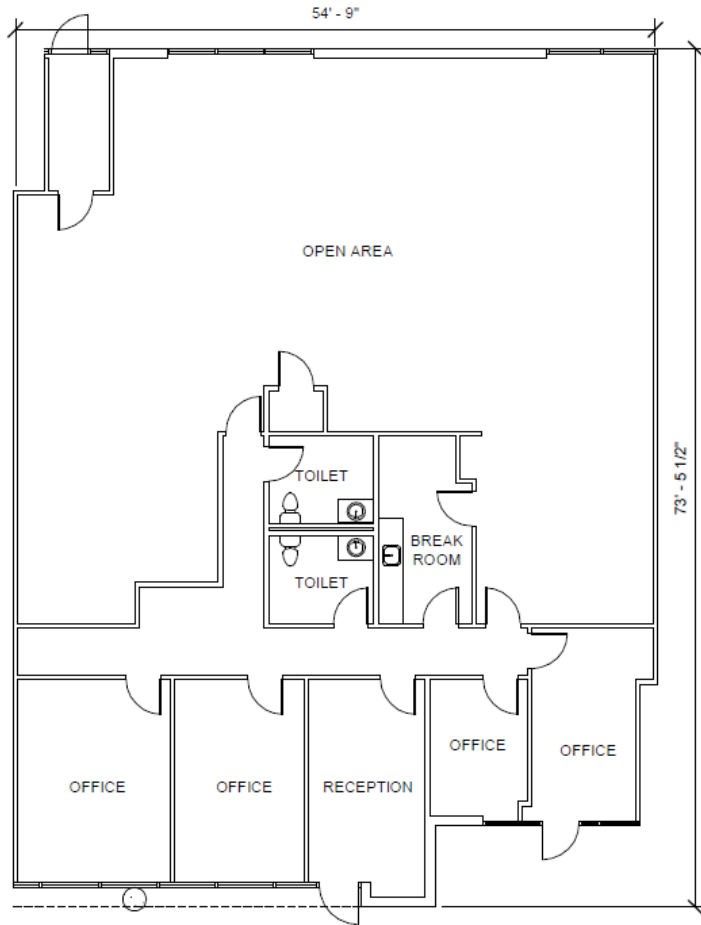
MANAGED BY:

CIP REAL ESTATE

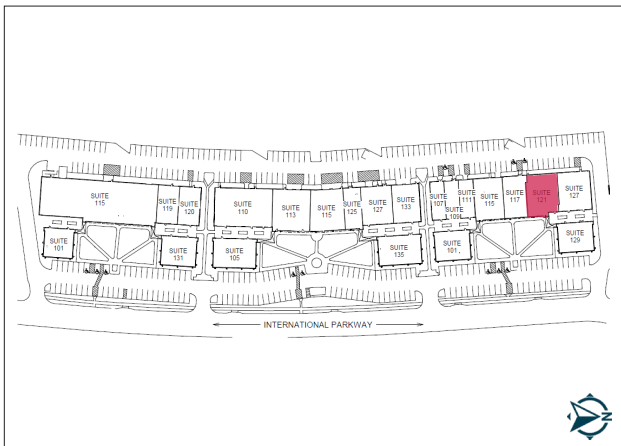
LEE & ASSOCIATES
COMMERCIAL REAL ESTATE SERVICES
leedallas.com

FLOOR PLAN

STE 121
±4,020 SF



SITE PLAN



AERIAL



All information furnished regarding property for sale, rental or financing is from sources deemed reliable, but no warranty or representation is made to the accuracy thereof and same is submitted to errors, omissions, change of price, rental or other conditions prior to sale, lease or financing or withdrawal without notice. No liability of any kind is to be imposed on the broker herein.

FOR MORE INFORMATION:

JESSICA REINHARDT
972.934.4005
jreinhardt@lee-associates.com

SUSAN CANCEMI
972.934.4005
scancemi@lee-associates.com

MANAGED BY:

