

INDUSTRIAL, FLEX & CREATIVE OFFICE

**FOR LEASE**

14,613 SF AVAILABLE



**METRIC  
COLLECTIVE**



OWNED BY:

**M|I|G**<sup>®</sup>  
Real Estate

LEASED BY:

**LA**  
LEE & ASSOCIATES

# CAMPUS MAP



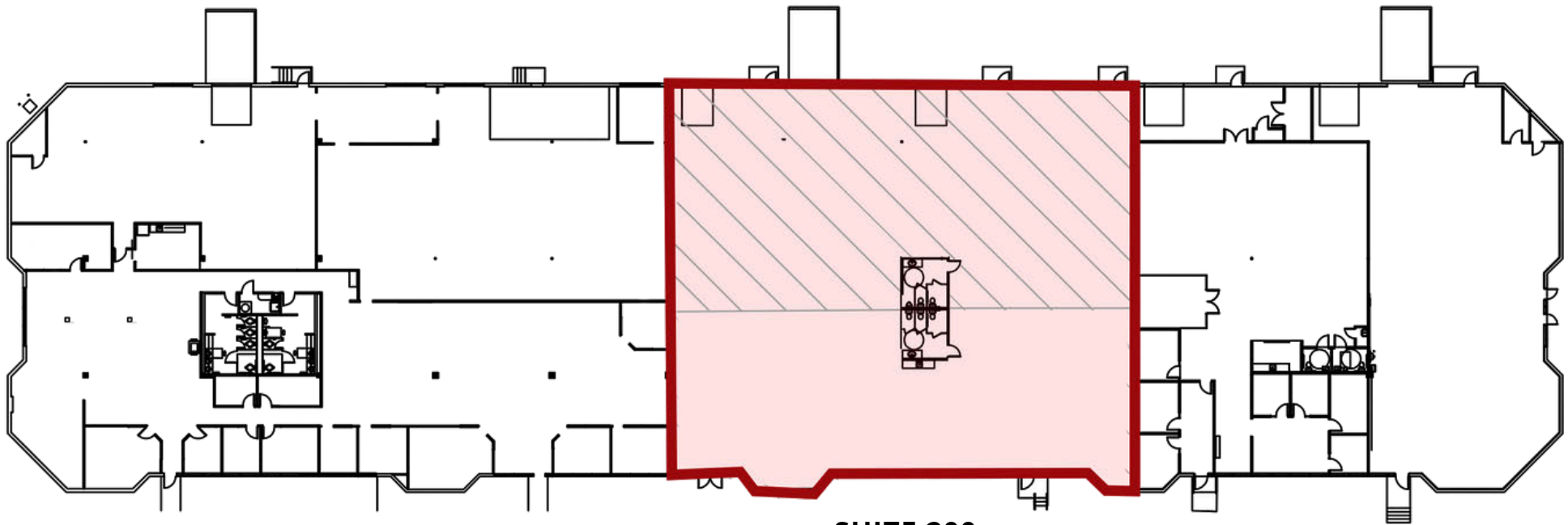
# BUILDING E

1909 W. BRAKER LN

AVAILABLE: 14,613 SF



 WAREHOUSE



**SUITE 200**  
**14,613 SF**

**MITCHELL BECKER**

512.410.8265

mbecker@lee-associates.com

**WILL SALLIS**

512.410.8269

wsallis@lee-associates.com

**AVERY LEVY**

512.410.8263

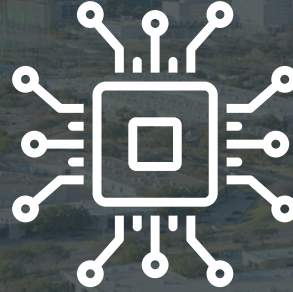
alevy@lee-associates.com

 **LEE &  
ASSOCIATES**  
COMMERCIAL REAL ESTATE SERVICES

# DRIVE TIMES



**15 MIN**  
TO DOWNTOWN



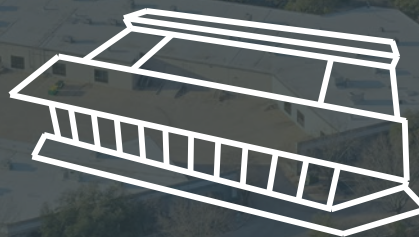
**33 MIN**  
TO SAMSUNG



**25 MIN**  
TO TESLA GIGAFACTORY



**20 MIN**  
TO THE AIRPORT



**4 MIN**  
TO Q2 STADIUM



**2 MIN**  
TO THE DOMAIN



## 550,000 SF CREATIVE CAMPUS

Metric Collective, formerly known as The Offices at Braker, is a 550,000 SF flex/industrial and creative office campus located in North Austin's flex/industrial submarket. The 13-building campus is within a mile (2-minute drive time) of the Domain, Austin's premier mixed-use development, and has access to over a hundred retailers, six hotels, and dozens of restaurants. With close proximity and accessibility to Mopac (Loop 1), Research Boulevard (Highway 183), Capital of Texas Highway (Loop 360) and Interstate 35, this coveted submarket is Austin's largest with 11-million SF and boasts the strongest demand by its 95.4% occupancy.

# CONTACT US

**MITCHELL BECKER**

512.410.8265

[mbecker@lee-associates.com](mailto:mbecker@lee-associates.com)

**WILL SALLIS**

512.410.8269

[wsallis@lee-associates.com](mailto:wsallis@lee-associates.com)

**AVERY LEVY**

512.410.8263

[alevy@lee-associates.com](mailto:alevy@lee-associates.com)



**LEE &  
ASSOCIATES**

COMMERCIAL REAL ESTATE SERVICES