

INDUSTRIAL, FLEX & CREATIVE OFFICE

FOR LEASE

6,302 - 24,624 SF



**METRIC
COLLECTIVE**



OWNED BY:

M|I|G[®]
Real Estate

LEASED BY:

LA
LEE & ASSOCIATES

CAMPUS MAP

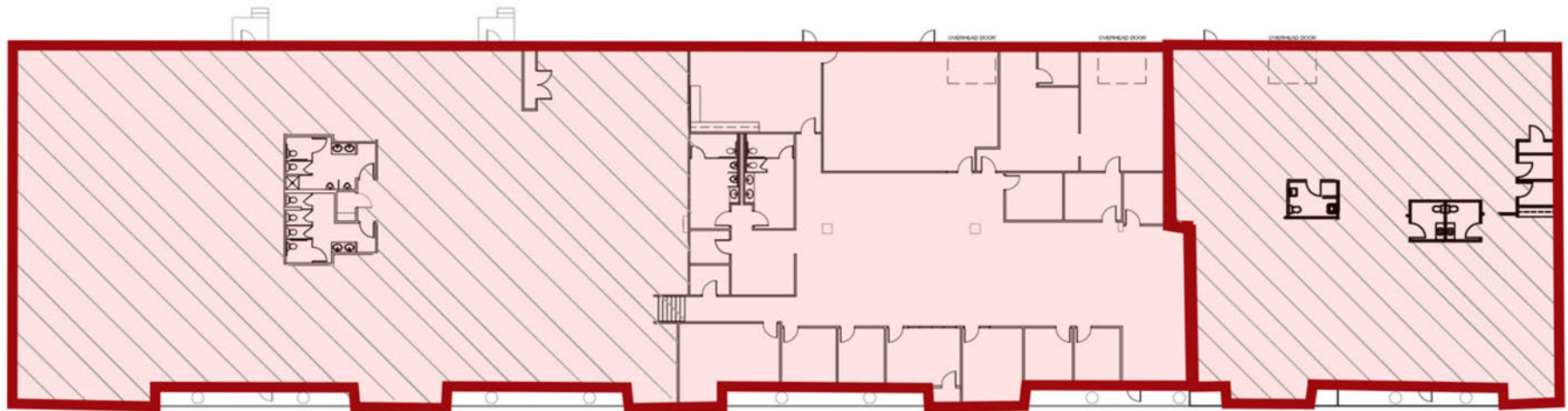
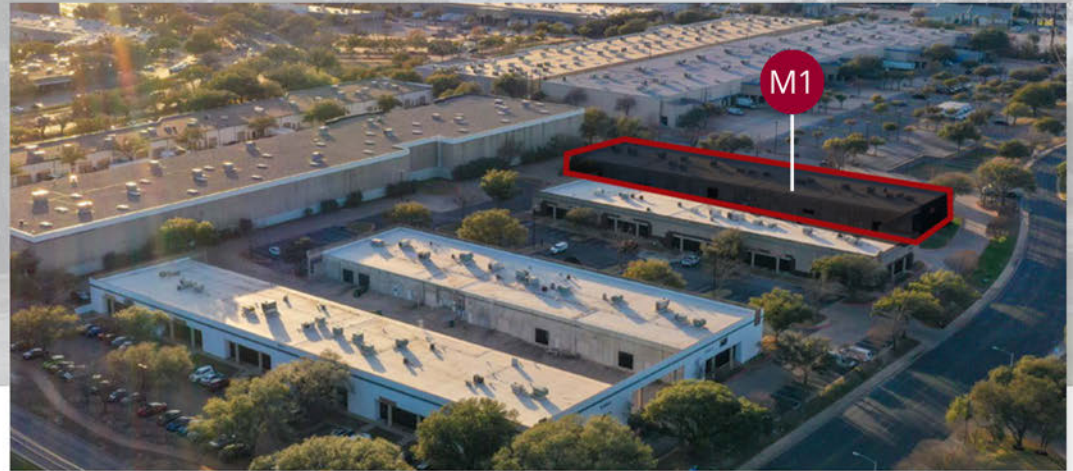


BUILDING M1

11500-1 METRIC BLVD

AVAILABLE: 6,302 - 24,624 SF

 WAREHOUSE



SUITE 150*
18,322 SF

SUITE 190*
6,302 SF

***SUITES 150 & 190 CAN BE COMBINED FOR 24,624 SF**

MITCHELL BECKER

512.410.8265

mbecker@lee-associates.com

WILL SALLIS

512.410.8269

wsallis@lee-associates.com

AVERY LEVY

512.410.8263

alevy@lee-associates.com

 **LEE &
ASSOCIATES**
COMMERCIAL REAL ESTATE SERVICES

DRIVE TIMES



15 MIN
TO DOWNTOWN



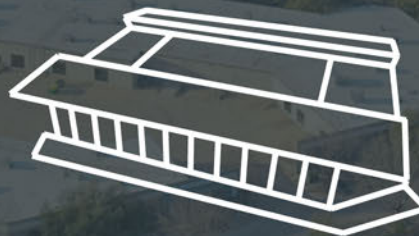
33 MIN
TO SAMSUNG



25 MIN
TO TESLA GIGAFACTORY



20 MIN
TO THE AIRPORT



4 MIN
TO Q2 STADIUM



2 MIN
TO THE DOMAIN



**METRIC
COLLECTIVE**

550,000 SF CREATIVE CAMPUS

Metric Collective, formerly known as The Offices at Braker, is a 550,000 SF flex/industrial and creative office campus located in North Austin's flex/industrial submarket. The 13-building campus is within a mile (2-minute drive time) of the Domain, Austin's premier mixed-use development, and has access to over a hundred retailers, six hotels, and dozens of restaurants. With close proximity and accessibility to Mopac (Loop 1), Research Boulevard (Highway 183), Capital of Texas Highway (Loop 360) and Interstate 35, this coveted submarket is Austin's largest with 11-million SF and boasts the strongest demand by its 95.4% occupancy.

CONTACT US

MITCHELL BECKER

512.410.8265

mbecker@lee-associates.com

WILL SALLIS

512.410.8269

wsallis@lee-associates.com

AVERY LEVY

512.410.8263

alevy@lee-associates.com



**LEE &
ASSOCIATES**

COMMERCIAL REAL ESTATE SERVICES