

INDUSTRIAL, FLEX & CREATIVE OFFICE

FOR LEASE

11,500 - 26,047 SF



**METRIC
COLLECTIVE**



OWNED BY:

M|I|G[®]
Real Estate

LEASED BY:

LA
LEE & ASSOCIATES

CAMPUS MAP



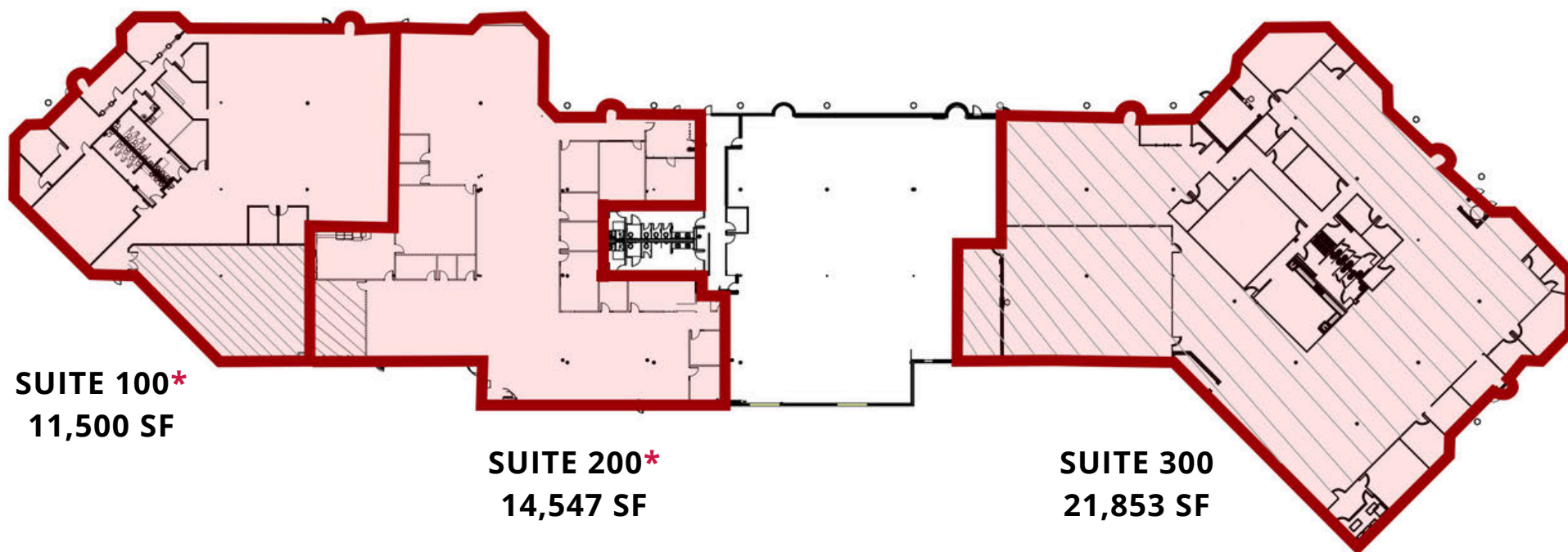
BUILDING B

1908 KRAMER LN

AVAILABLE: 11,500 - 26,047 SF



 WAREHOUSE



SUITE 100*
11,500 SF

SUITE 200*
14,547 SF

SUITE 300
21,853 SF

***SUITES 100 & 200 CAN BE COMBINED FOR 26,047 SF**

MITCHELL BECKER

512.410.8265

mbecker@lee-associates.com

WILL SALLIS

512.410.8269

wsallis@lee-associates.com

AVERY LEVY

512.410.8263

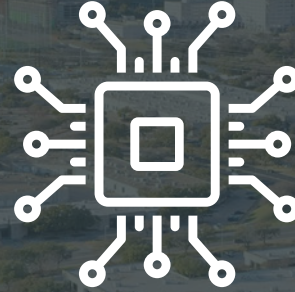
alevy@lee-associates.com

 **LEE &
ASSOCIATES**
COMMERCIAL REAL ESTATE SERVICES

DRIVE TIMES



15 MIN
TO DOWNTOWN



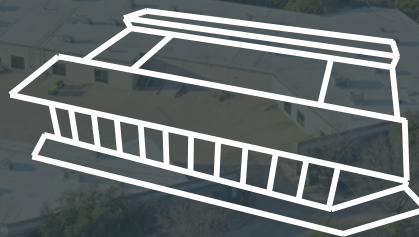
33 MIN
TO SAMSUNG



25 MIN
TO TESLA GIGAFACTORY



20 MIN
TO THE AIRPORT



4 MIN
TO Q2 STADIUM



2 MIN
TO THE DOMAIN



550,000 SF CREATIVE CAMPUS

Metric Collective, formerly known as The Offices at Braker, is a 550,000 SF flex/industrial and creative office campus located in North Austin's flex/industrial submarket. The 13-building campus is within a mile (2-minute drive time) of the Domain, Austin's premier mixed-use development, and has access to over a hundred retailers, six hotels, and dozens of restaurants. With close proximity and accessibility to Mopac (Loop 1), Research Boulevard (Highway 183), Capital of Texas Highway (Loop 360) and Interstate 35, this coveted submarket is Austin's largest with 11-million SF and boasts the strongest demand by its 95.4% occupancy.

CONTACT US

MITCHELL BECKER

512.410.8265

mbecker@lee-associates.com

WILL SALLIS

512.410.8269

wsallis@lee-associates.com

AVERY LEVY

512.410.8263

alevy@lee-associates.com



**LEE &
ASSOCIATES**

COMMERCIAL REAL ESTATE SERVICES