

1603 MISSION DRIVE

SOLVANG
CA 93463

NOW LEASING

±175 SF - ±2,545 SF Retail/Restaurant
space at Founders Market — a new
chapter in storybook Solvang

\$3.00/SF NNN (\$0.70)

PHOTOS TAKEN DURING RENOVATIONS ON FOURTH OF JULY WEEKEND

PRESENTED BY

SIERRA FALSO
805.869.2809
sfalso@radiusgroup.com

CA LIC. 01276646



1693 MISSION DRIVE

SOLVANG CALIFORNIA 93463

Formerly known as Denmark Square, the newly remodeled and re-branded Founders Market is ready to welcome a dynamic mix of local artisans, culinary ventures, and boutique retailers. **Anchored by the already successful CHOMP restaurant, The Coffee House by CHOMP, and The Santa Ynez Valley Creamery** and production facility currently under construction.

Founders Market is located at the eastern gateway to downtown Solvang at the intersection of Mission Drive and Alisal Road, this thoughtfully revitalized center offers a rare opportunity to join a curated tenant community in one of California's most charming and heavily visited destinations.

Other Tenants Include

- Standing Sun Wines & Tasting Room
- The Giving Ink
- Andrea's Heart (Custom Jewelry Store)
- Many 2nd Story Vacation Rentals & Apartments

Turn-key Retail Spaces + High-Traffic Destination

- Well-configured, move-in ready spaces ideal for small specialty shops, services, and curated retail experiences.
- Strong foot traffic from both locals and tourists, updated infrastructure, and an inviting design that honors Solvang's unique heritage, this is the perfect setting for businesses looking to be part of the town's next great gathering place.

Final Leasing Opportunities Available

With seven spaces remaining, we are seeking unique concepts that will complement the existing mix. Our most exciting opportunity is a **±1,580 SF - ±2,545 SF space with a large wraparound patio seating area** to accommodate a distinctive Asian cuisine restaurant. The partners are seeking to lease to either a **Thai, Japanese, Vietnamese, or Korean BBQ-style** dining or concept.

There are **six additional small spaces** that we welcome interest from **boutique operators, artisan producers, and lifestyle services** that share our vision of creating a vibrant, community-centered experiential destination.

FOUNDERS MARKET

Leasing Highlights

Suite B1

±175 SF | \$3.00/SF NNN (\$0.70)

Suite B2

±375 SF | \$3.00/SF NNN (\$0.70)

Suite B3

±635 SF | \$3.00/SF NNN (\$0.70)

Suites B1 & B2 Combined

±550 SF | \$3.00/SF NNN (\$0.70)

Suite B4

±320 SF | Short Term Lease
Contact Agent for Lease Rate

Suite C1

±290 SF | \$3.00/SF NNN (\$0.70)

Suite C3

±675 SF | \$3.00/SF NNN (\$0.70)

Suite C5

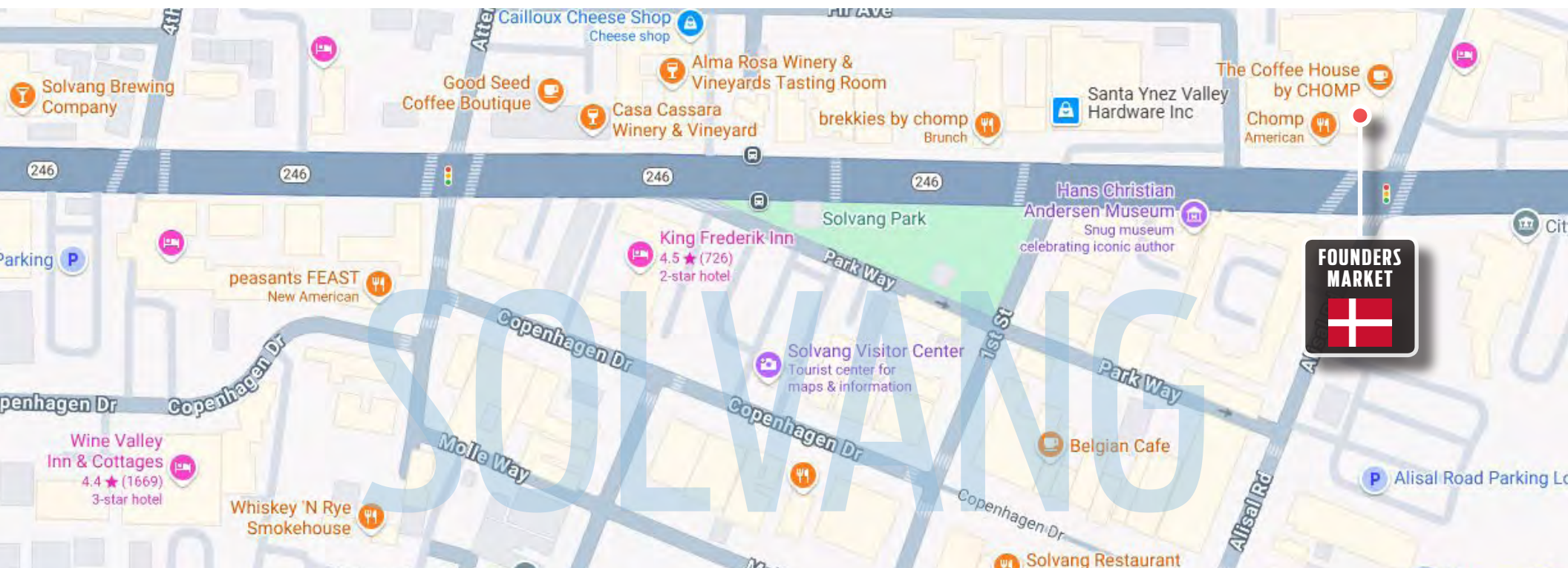
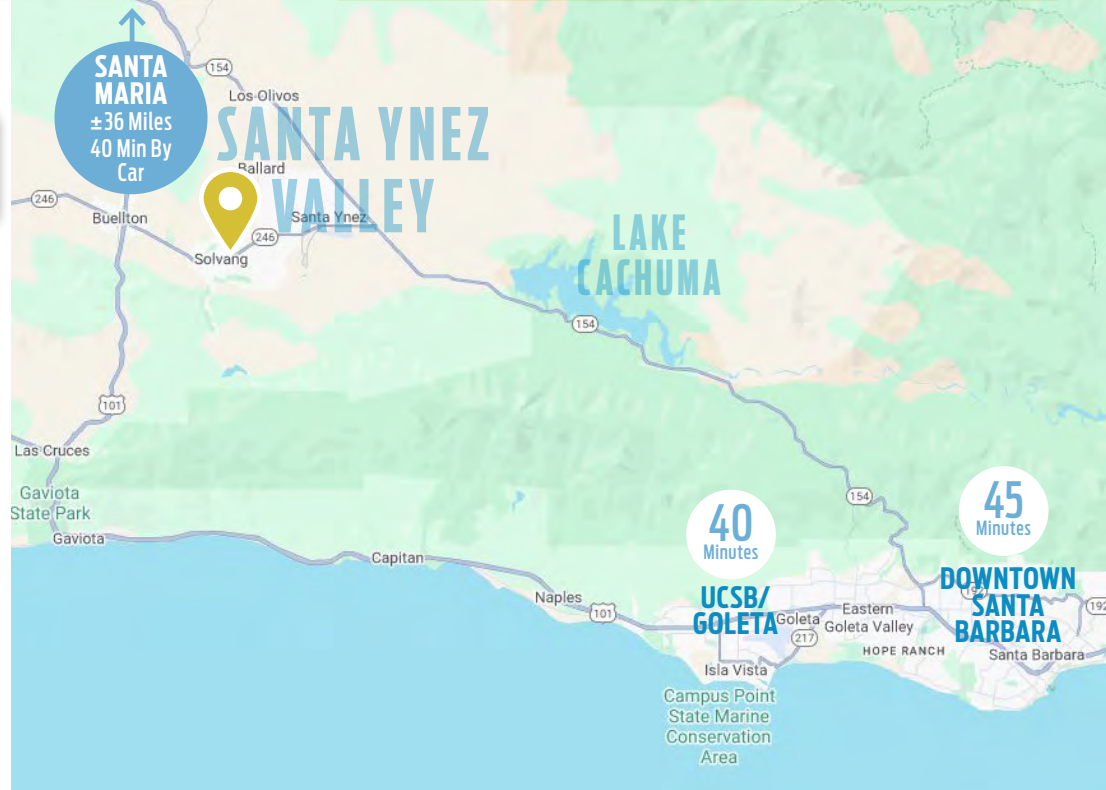
±1,580 SF | \$3.00/SF NNN (\$0.70)

Suites C1 & C2 Combined

±965 SF | \$3.00/SF NNN (\$0.70)

Suites C1, C2 & C3 Combined

±2,545 SF | \$3.00/SF NNN (\$0.70)



FOUNDERS MARKET

1693 MISSION DR • SOLVANG CA 93463

FOR LEASE

±175 SF - ±2,545 SF Retail/Restaurant space at Founders Market — located at the gateway/main entrance to Solvang

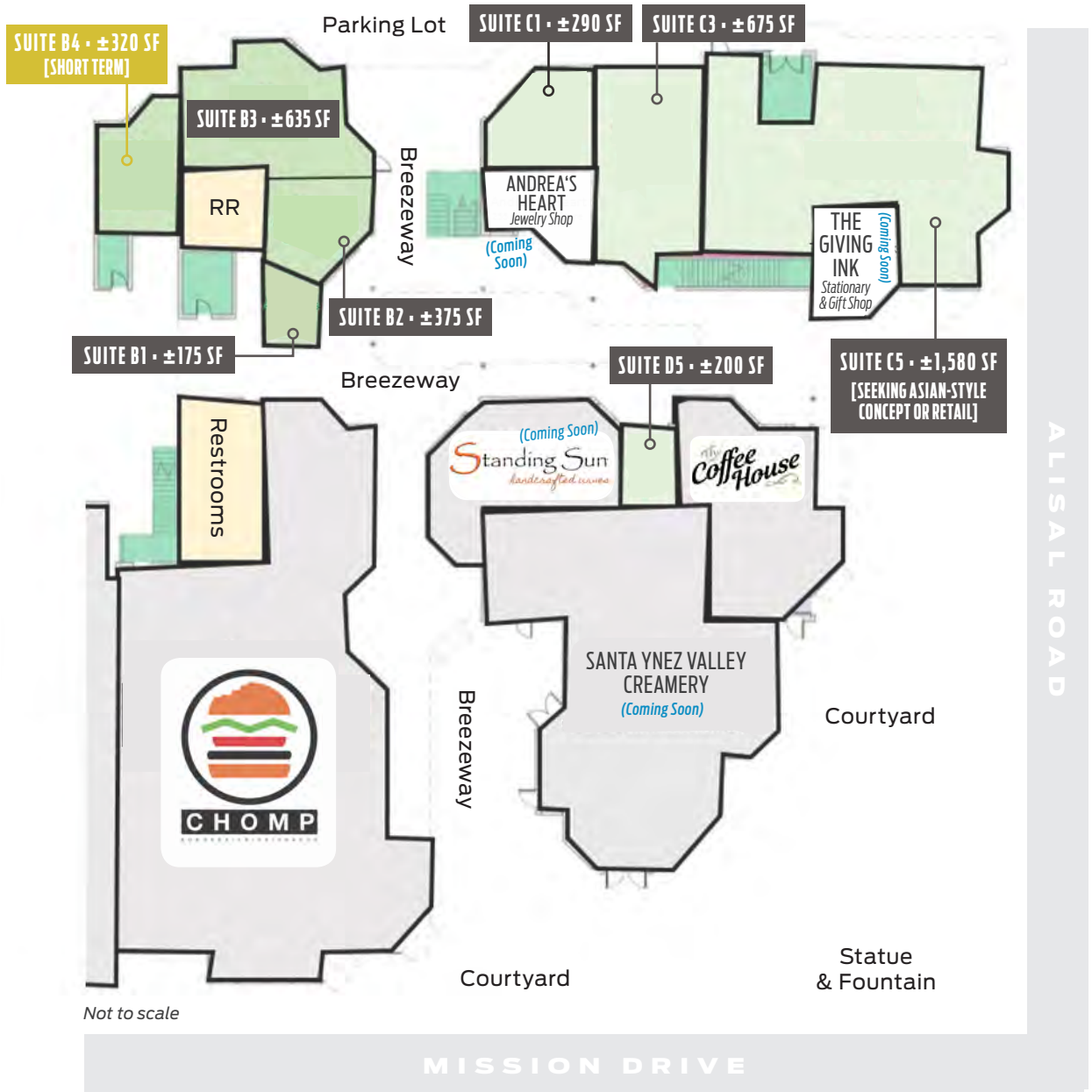
SITE PLAN



© 07/29/25 Radius Group Commercial Real Estate, Inc. DRE lic. 01334755. All rights reserved. Content and/or images may not be used without permission. The information provided here has been obtained from the owner of the property or from other sources deemed reliable. We have no reason to doubt its accuracy, but we do not guarantee it.

PRESENTED BY

SIERRA FALSO
805.869.2809
sfalso@radiusgroup.com
CA LIC. 01276646



MISSION DRIVE



FOUNDERS MARKET

1693 MISSION DR • SOLVANG CA 93463

FOR LEASE

±175 SF - ±2,545 SF Retail/Restaurant space at Founders Market — located at the gateway/main entrance to Solvang



PHOTOS TAKEN DURING RENOVATION • BLUE TAPE TO BE REMOVED

© 07/29/25 Radius Group Commercial Real Estate, Inc. DRE lic. 01334755. All rights reserved. Content and/or images may not be used without permission. The information provided here has been obtained from the owner of the property or from other sources deemed reliable. We have no reason to doubt its accuracy, but we do not guarantee it.

PRESENTED BY

SIERRA FALSO
805.869.2809
sfalso@radiusgroup.com
CA LIC. 01276646

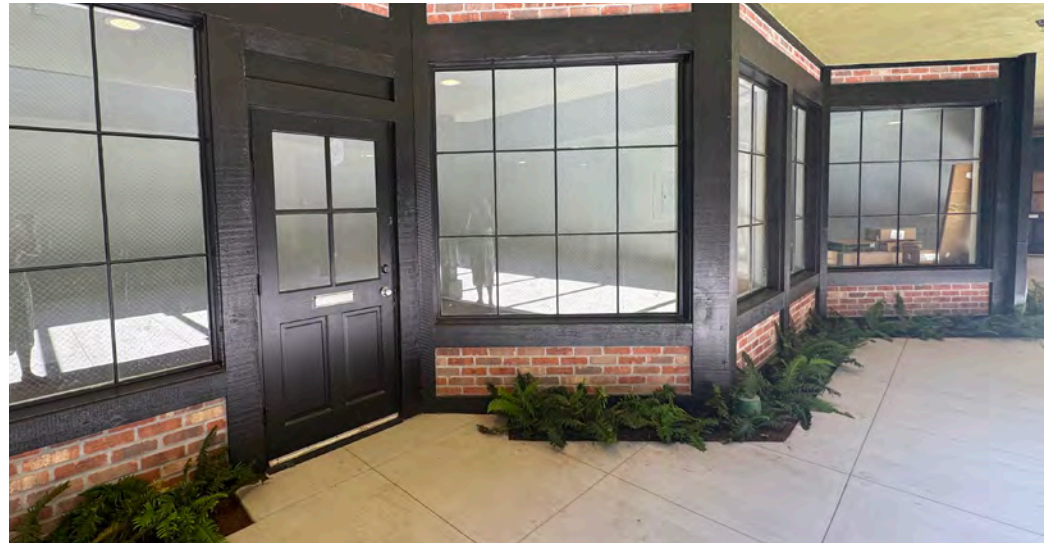
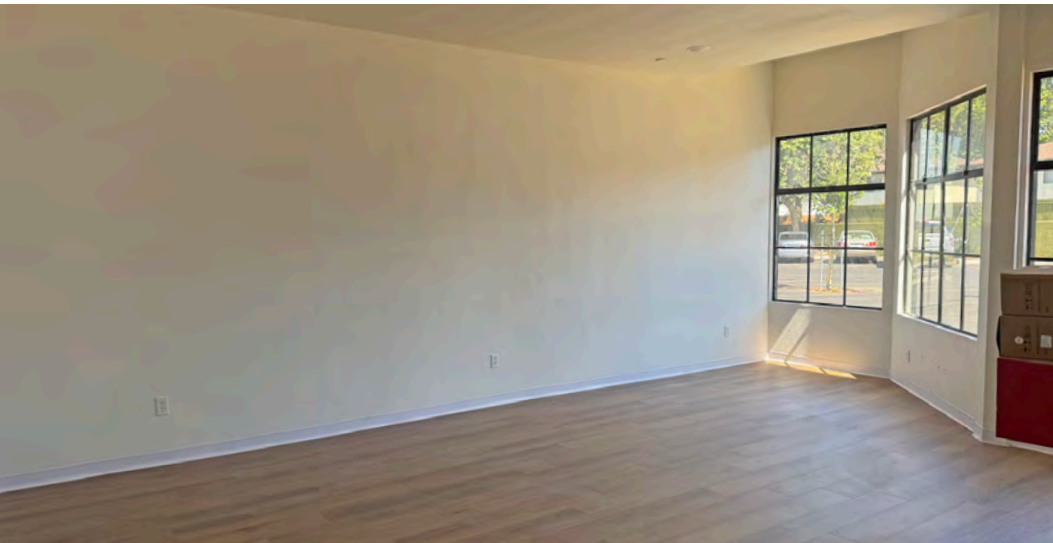


FOUNDERS MARKET

1693 MISSION DR • SOLVANG CA 93463

FOR LEASE

±175 SF - ±2,545 SF Retail/Restaurant space at Founders Market — located at the gateway/main entrance to Solvang



© 07/29/25 Radius Group Commercial Real Estate, Inc. DRE lic. 01334755. All rights reserved. Content and/or images may not be used without permission. The information provided here has been obtained from the owner of the property or from other sources deemed reliable. We have no reason to doubt its accuracy, but we do not guarantee it.

PRESENTED BY

SIERRA FALSO
805.869.2809
sfalso@radiusgroup.com

CA LIC. 01276646



**“Most Christmassy Towns
in America”**

TIME MAGAZINE

**“Best Historic Small Town
Category”**

10 BEST READERS' CHOICE AWARDS USA TODAY

**“10 Most Beautiful Small Towns
in the Western U.S.”**

SUNSET MAGAZINE

SOLVANG - DENMARK'S GOLDEN OUTPOST

Full of Scandinavian charm, Solvang (Danish for Sunny Field) is known for its month-long celebration every December attracting scores of holiday shoppers and tourists. “Julefest” is a winter fair of lights, pagentry and culinary delights.

Surrounded by vineyard dotted hills and picturesque backdrops, **SOLVANG** is a town in southern California's Santa Ynez Valley known for its Danish style architecture and many wineries. A community that is built on traditions; making it a popular destination for visitors to enjoy its festivals, fashion, music and cuisines. Paying tribute to its cultural heritage is a bronze statue of Hans Christen Andersen's *The Little Mermaid*, nestled on the grounds of Founders Market. Named by *the New York Post* and *Reader's Digest* as “Best Christmas Town”, the area boasts chic Scandinavian-style lodging, numerous quaint shops, chef-driven restaurants and, of course, great wine.

TRAFFIC COUNTS

Average Vehicle Traffic:
Mission Dr. & Alisal Rd. 23,892 ADT

2025 Traffic Counts from Sites USA

© 07/29/25 Radius Group Commercial Real Estate, Inc. DRE lic. 01334755. All rights reserved.
Content and/or images may not be used without permission. The information provided here has
been obtained from the owner of the property or from other sources deemed reliable. We have no
reason to doubt its accuracy, but we do not guarantee it.

2025 DEMOGRAPHICS

	1 MILE	2 MILE	3 MILE
Average Household Income:	\$177,882	\$179,014	\$171,425
Population:	5,965	7,215	10,782
Daytime Population:	4,932	6,158	8,282

2025 Estimates from Sites USA

PRESENTED BY

SIERRA FALSO

805.869.2809

sfalso@radiusgroup.com

CA LIC. 01276646



SELECT NEARBY AMENITIES & POINTS OF INTEREST

- 1 Elverhøj Museum of History & Art
- 2 Hotel Corque
- 3 Olsen's Danish Village Bakery
- 4 Alma Rosa Winery & Vineyards
- 5 Hans Christian Andersen Museum
- 6 Brekkies by Chomp
- 7 Good Seed Coffee Boutique
- 8 Craft House At Corque
- 9 Solvang Theaterfest Amphitheater
- 10 Allegiant Fitness Santa Ynez Valley
- 11 Solvang Vintage Motorcycle Museum
- 12 High Roller Tiki Lounge
- 13 New Haven Inn
- 14 The M Solvang (Boutique Motel)
- 15 Viking Garden
- 16 Birkholm's Bakery & Cafe
- 17 Solvang Windmill
- 18 Artisan Excursion Wine Tours
- 19 Belgian Cafe
- 20 Solvang Park
- 21 Z Folio Gallery
- 22 Solvang Veterans Memorial Hall
- 23 Cafe Dolce
- 24 Cecco Ristorante
- 25 Mortensen's Danish Bakery
- 26 The Landsby
- 27 Wilding Museum
- 28 peasants FEAST
- 29 Whiskey 'N Rye Smokehouse
- 30 Copenhagen Sausage Garden



PRESENTED BY

SIERRA FALSO
805.869.2809
sfalso@radiusgroup.com

CA LIC. 01276646

