

# 5569 EKWILLST SUITE B

GOLETA CA  
93111

## FOR LEASE

±2,800 SF Office/Warehouse +  
stand-alone storage unit  
in Santa Barbara's flourishing  
high tech corridor

\$1.75/SF NNN (\$0.63)



PRESENTED BY

**GENE DEERING**

805.879.9623

[gdeering@radiusgroup.com](mailto:gdeering@radiusgroup.com)

CA LIC. 01450943

**FRANK GAMBERDELLA**

805.879.9640

[fgamberdella@radiusgroup.com](mailto:fgamberdella@radiusgroup.com)

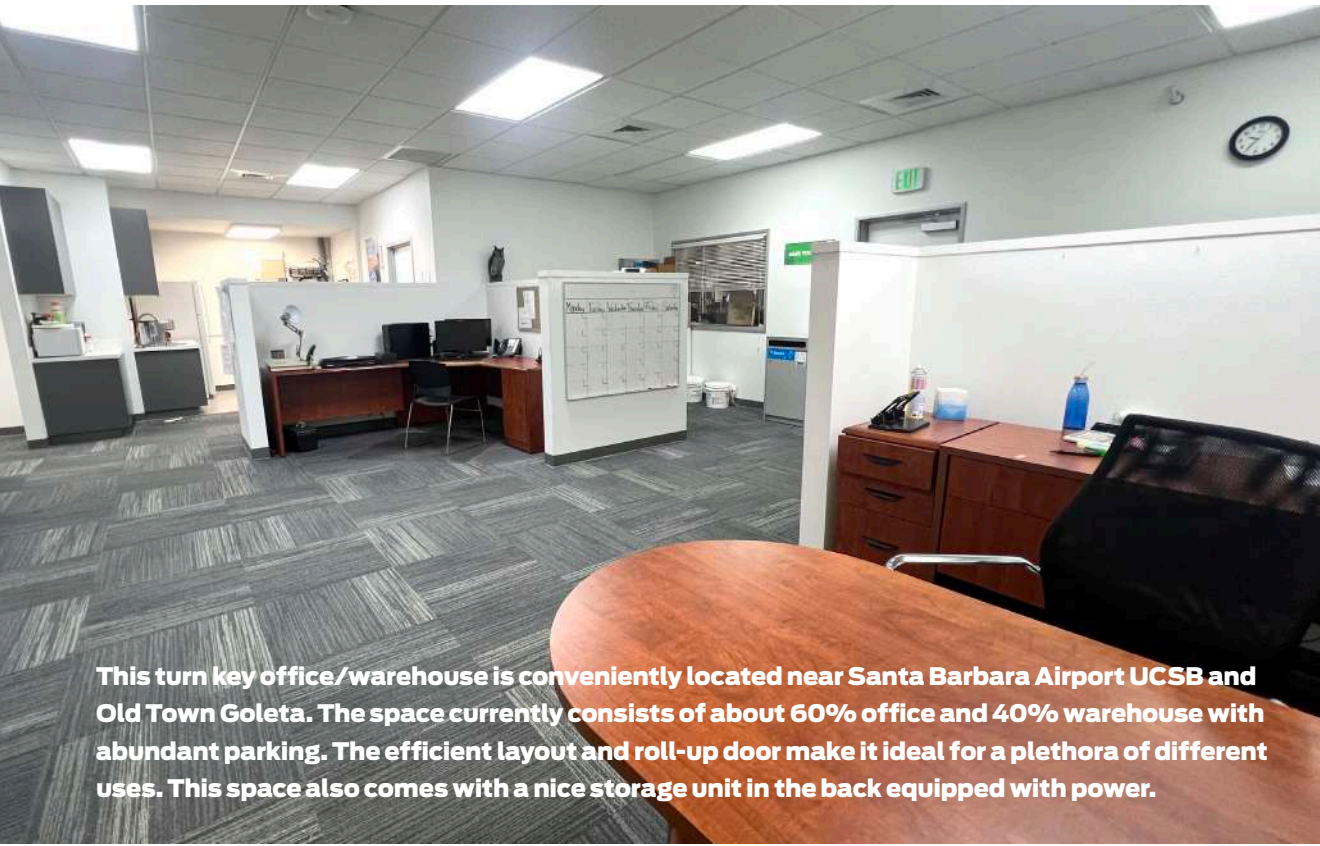
CA LIC. 02224940



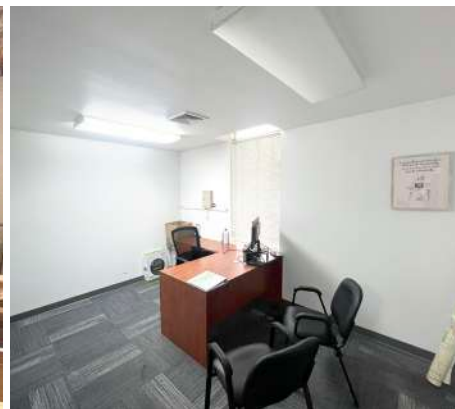
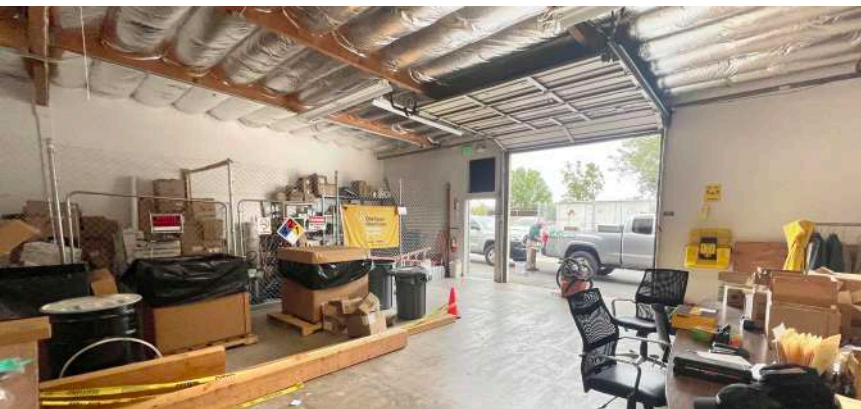


5569 EKWILL ST  
SUITE B  
GOLETA  
CA 93111

**FOR LEASE**  
±2,800 SF Office / Warehouse +  
stand-alone storage unit  
\$1.75/SF NNN (\$0.63)



This turn key office/warehouse is conveniently located near Santa Barbara Airport UCSB and Old Town Goleta. The space currently consists of about 60% office and 40% warehouse with abundant parking. The efficient layout and roll-up door make it ideal for a plethora of different uses. This space also comes with a nice storage unit in the back equipped with power.



#### OPPORTUNITY SPECIFICS

##### Type

Office / Warehouse

##### Lease Rate

\$1.75/SF NNN (\$0.63)

##### Space Size

±2,800 SF + Powered Stand-Alone  
Storage Unit

##### Available

November 1, 2025

##### HVAC

In Office

##### Clear Height

11 ft.

##### Power

200amp

##### Roll-Up Door

Loading One 10 x 10 Roll-Up Door

##### Parking

3.66/1,000 (Approx. 10 Spaces)

PRESENTED BY

**GENE DEERING**

805.879.9623

[gdeering@radiusgroup.com](mailto:gdeering@radiusgroup.com)

CA LIC. 01450943

**FRANK GAMBERDELLA**

805.879.9640

[fgamberdella@radiusgroup.com](mailto:fgamberdella@radiusgroup.com)

CA LIC. 02224940





5569 EKWILL ST  
SUITE B  
GOLETA  
CA 93111

**FOR LEASE**

±2,800 SF Office / Warehouse +  
stand-alone storage unit  
\$1.75/SF NNN (\$0.63)



PRESENTED BY

**GENE DEERING**  
805.879.9623  
[gdeering@radiusgroup.com](mailto:gdeering@radiusgroup.com)  
CA LIC. 01450943

**FRANK GAMBERDELLA**  
805.879.9640  
[fgamberdella@radiusgroup.com](mailto:fgamberdella@radiusgroup.com)  
CA LIC. 02224940



© 7/23/25 Radius Group Commercial Real Estate, Inc. DRE lic. 01334755. All rights reserved. Content and/or images may not be used without permission. The information provided here has been obtained from the owner of the property or from other sources deemed reliable. We have no reason to doubt its accuracy, but we do not guarantee it.

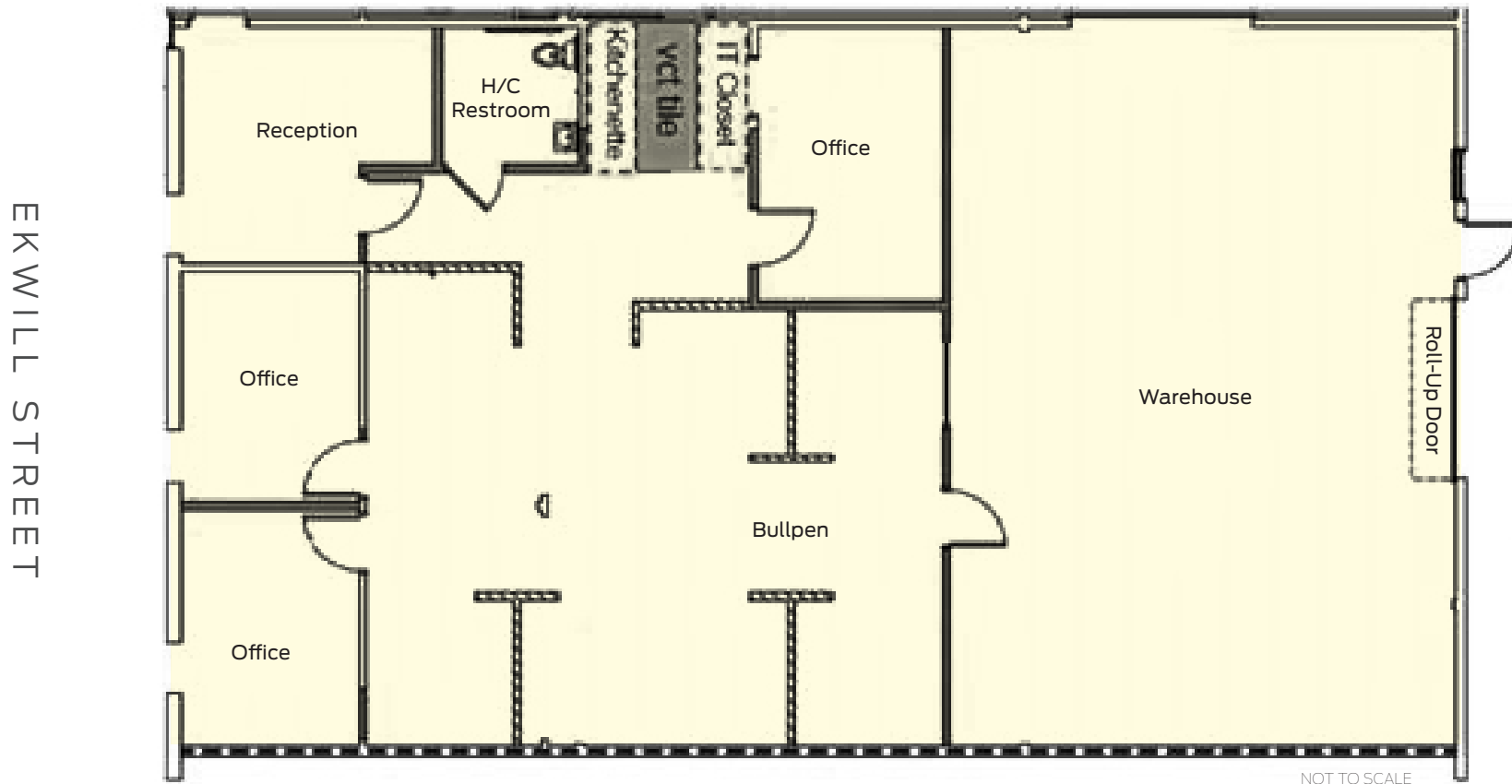
[RADIUSGROUP.COM](http://RADIUSGROUP.COM)



5569 EKWILL ST  
SUITE B GOLETA  
CA 93111

**FOR LEASE**  
±2,800 SF Office / Warehouse +  
stand-alone storage unit  
\$1.75/SF NNN (\$0.63)

**SUITE B • ±2,800 SF • \$1.75/SF NNN (\$0.60)**



PRESENTED BY

**GENE DEERING**  
805.879.9623  
[gdeering@radiusgroup.com](mailto:gdeering@radiusgroup.com)  
CA LIC. 01450943

**FRANK GAMBERDELLA**  
805.879.9640  
[fgamberdella@radiusgroup.com](mailto:fgamberdella@radiusgroup.com)  
CA LIC. 02224940





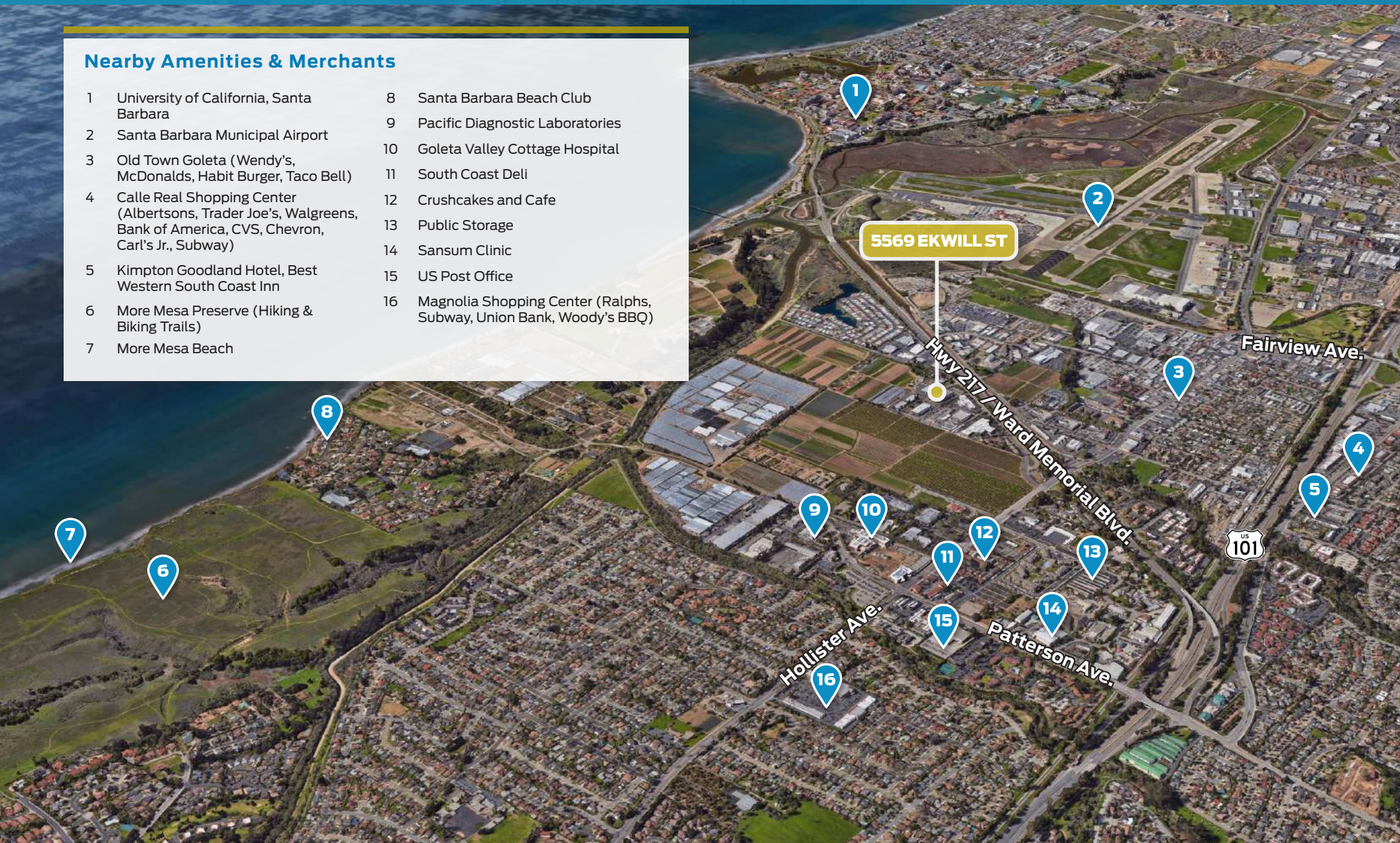
5569 EKWILL ST  
SUITE B GOLETA  
CA 93111

FOR LEASE

±2,800 SF Office / Warehouse +  
stand-alone storage unit  
\$1.75/SF NNN (\$0.63)

### Nearby Amenities & Merchants

- |   |   |
|---|---|
| 1 University of California, Santa Barbara   | 8 Santa Barbara Beach Club  |
| 2 Santa Barbara Municipal Airport   | 9 Pacific Diagnostic Laboratories                                     |
| 3 Old Town Goleta (Wendy's, McDonalds, Habit Burger, Taco Bell)   | 10 Goleta Valley Cottage Hospital                                     |
| 4 Calle Real Shopping Center (Albertsons, Trader Joe's, Walgreens, Bank of America, CVS, Chevron, Carl's Jr., Subway) | 11 South Coast Deli   |
| 5 Kimpton Goodland Hotel, Best Western South Coast Inn  | 12 Crushcakes and Cafe  |
| 6 More Mesa Preserve (Hiking & Biking Trails)   | 13 Public Storage   |
| 7 More Mesa Beach   | 14 Sansum Clinic  |
|   | 15 US Post Office   |
|   | 16 Magnolia Shopping Center (Ralphs, Subway, Union Bank, Woody's BBQ) |



PRESENTED BY

**GENE DEERING**

805.879.9623

[gdeering@radiusgroup.com](mailto:gdeering@radiusgroup.com)

CA LIC. 01450943

**FRANK GAMBERDELLA**

805.879.9640

[fgamberdella@radiusgroup.com](mailto:fgamberdella@radiusgroup.com)

CA LIC. 02224940





# SANTA BARBARA

## GOLETA

5569 EKWILL ST

Hollister Ave.



PRESENTED BY

**GENE DEERING**

805.879.9623

[gdeering@radiusgroup.com](mailto:gdeering@radiusgroup.com)

CA LIC. 01450943

**FRANK GAMBERDELLA**

805.879.9640

[fgamberdella@radiusgroup.com](mailto:fgamberdella@radiusgroup.com)

CA LIC. 02224940





5569 EKWILL ST  
SUITE B  
GOLETA  
CA 93111

**FOR LEASE**  
±2,800 SF Office / Warehouse +  
stand-alone storage unit  
\$1.75/SF NNN (\$0.63)



PRESENTED BY

**GENE DEERING**  
805.879.9623  
[gdeering@radiusgroup.com](mailto:gdeering@radiusgroup.com)  
CA LIC. 01450943

**FRANK GAMBERDELLA**  
805.879.9640  
[fgamberdella@radiusgroup.com](mailto:fgamberdella@radiusgroup.com)  
CA LIC. 02224940



© 7/23/25 Radius Group Commercial Real Estate, Inc. DRE lic. 01334755. All rights reserved. Content and/or images may not be used without permission. The information provided here has been obtained from the owner of the property or from other sources deemed reliable. We have no reason to doubt its accuracy, but we do not guarantee it.

[RADIUSGROUP.COM](http://RADIUSGROUP.COM)



# “THE GOOD LAND”

The city of Goleta rests a few minutes north of Santa Barbara in the South Coast region of Santa Barbara County, roughly 330 miles south of San Francisco and 90 miles north of Los Angeles. Goleta and the Gaviota Coast to the north make up 12 picturesque miles of the Santa Barbara coastline. In fact the area is known as The Good Land for its sprawling ranches, fertile farms, lemon orchards and sustainable gardens that supply local restaurants and farmers markets year round. From the Goleta pier to Point Arguello, the area is a recreational paradise. Whether fishing off the pier, hiking the bluffs, surfing Campus Point or getting up close and personal with wildlife while kayaking in the Goleta Slough, there is something for everyone.

The South Coast region's central location, year-round mild climate, proximity to the University of California, Santa Barbara (UCSB), high quality of living, bustling technology industry and wealth of outdoor amenities are but a few of the reasons Goleta and Santa Barbara are regularly selected among the best places to live and work by numerous sources including livability.com, Money Magazine and Sunset Magazine.

## MARKET



### Ellwood Mesa Sperling Preserve

This 230-acre preserve is the largest publicly-owned coastal open space on Santa Barbara County's South Coast. Popular with runners, surfers, bikers and equestrians, the Ellwood Mesa Coastal Trail meanders through natural habitats and provides beach access via the Ellwood Mesa bluffs. The Monarch Butterfly Grove lies just north and spans 78 acres of eucalyptus groves giving safe shelter to the butterflies who bear its name from late autumn through winter.