

# 5951 ENCINA ROAD

GOLETA CALIFORNIA 93117

**Professional  
Office Space Near  
Calle Real Shopping  
& Fairview Center**

With Excellent Off-street  
Parking & Courtyard

**FOR LEASE  
\$2.85/SF MG  
SUITE 200**

SIERRA FALSO  
805.869.2809  
[sfalso@radiusgroup.com](mailto:sfalso@radiusgroup.com)  
CA LIC. 01276646

MIKE CHENOWETH  
805.879.9608  
[mchenoweth@radiusgroup.com](mailto:mchenoweth@radiusgroup.com)  
CA LIC. 01213196







Located steps away from wonderful amenities along the commercial district off Calle Real. Contact Listing Agent for details and to schedule a showing.

*All suites currently being improved with new lighting, paint & flooring*

### Offering Specifics

Lease Rate	\$2.85/SF Modified Gross
Size	Suite 200: 714 SF
Tenant Expenses	Insurance & Utilities
Utilities	\$0.27/SF
Deposit	Equal to one month's rent
Term	Negotiable
Available	November 2025
CPI	CPI w/ minimum of 3%
Zoning	OI (Office Institutional)
Parking	5/1,000
HVAC	Yes
Restrooms	Common
CSO	3%

SIERRA FALSO  
805.869.2809  
[sfalso@radiusgroup.com](mailto:sfalso@radiusgroup.com)  
CA LIC. 01276646

MIKE CHENOWETH  
805.879.9608  
[mchenoweth@radiusgroup.com](mailto:mchenoweth@radiusgroup.com)  
CA LIC. 01213196

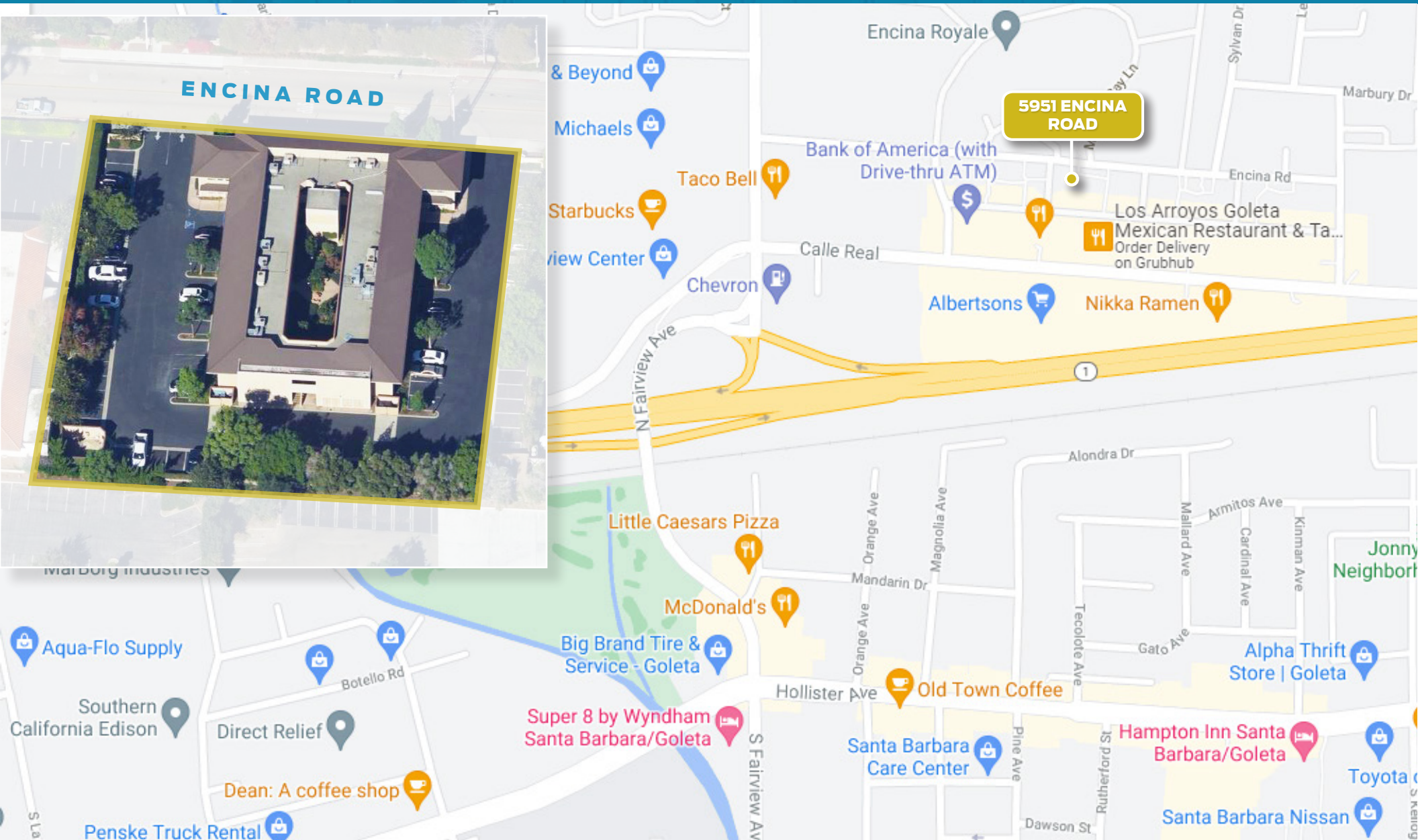




5951 ENCINA ROAD  
GOLETA CA  
93117

FOR LEASE

Courtyard-facing office space  
with plentiful off-street parking



SIERRA FALSO  
805.869.2809  
[sfalso@radiusgroup.com](mailto:sfalso@radiusgroup.com)  
CA LIC. 01276646

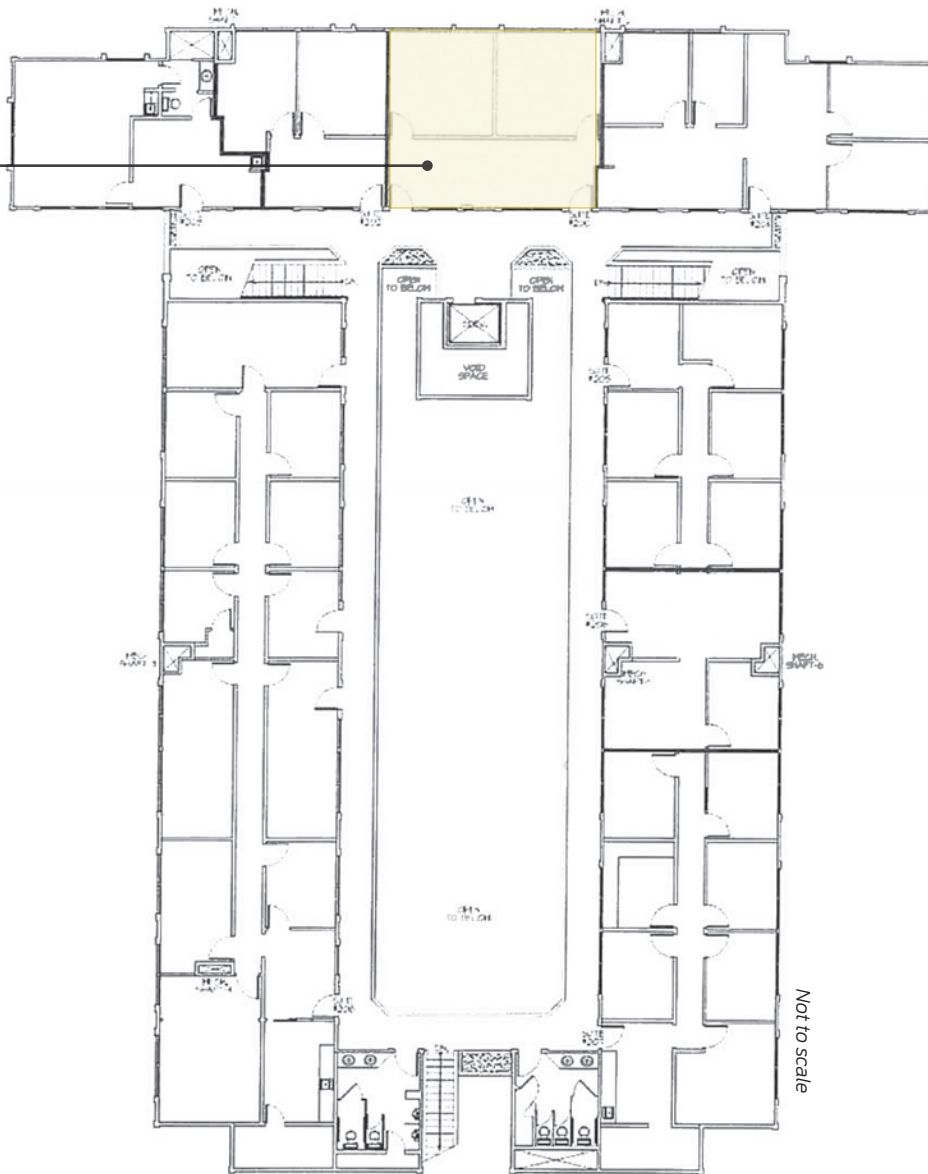
MIKE CHENOWETH  
805.879.9608  
[mchenoweth@radiusgroup.com](mailto:mchenoweth@radiusgroup.com)  
CA LIC. 01213196





SITE PLAN  
2ND FLOOR

STE 200  
±714 SF DIVISABLE  
TO ±357 SF



SIERRA FALSO  
805.869.2809  
[sfalso@radiusgroup.com](mailto:sfalso@radiusgroup.com)  
CA LIC. 01276646

MIKE CHENOWETH  
805.879.9608  
[mchenoweth@radiusgroup.com](mailto:mchenoweth@radiusgroup.com)  
CA LIC. 01213196





5951 GOLETA CA  
93117  
ENCINA ROAD

**FOR LEASE**

**Courtyard-facing office space  
with plentiful off-street parking**



SIERRA FALSO  
805.869.2809  
[sfalso@radiusgroup.com](mailto:sfalso@radiusgroup.com)  
CA LIC. 01276646

MIKE CHENOWETH  
805.879.9608  
[mchenoweth@radiusgroup.com](mailto:mchenoweth@radiusgroup.com)  
CA LIC. 01213196



© 8/21/25 Radius Group Commercial Real Estate, Inc. DRE lic. 01334755. All rights reserved. Content and/or images may not be used without permission. The information provided here has been obtained from the owner of the property or from other sources deemed reliable. We have no reason to doubt its accuracy, but we do not guarantee it.

[RADIUSGROUP.COM](http://RADIUSGROUP.COM)



Courtyard-facing office space  
with plentiful off-street parking

### Nearby Businesses, Amenities & Developments

- 1 University of California, Santa Barbara
- 2 Santa Barbara Municipal Airport
- 3 Old Town Goleta (Wendy's, McDonalds, Habit Burger, Taco Bell)
- 4 Calle Real Shopping Center (Albertsons, Trader Joe's, Walgreens, Bank of America, CVS, Chevron, Carl's Jr., Subway)
- 5 Kimpton Goodland Hotel, Best Western South Coast Inn
- 6 Hollister Village (Smart & Final, PetSmart, CVS, Pieology, More)
- 7 More Mesa Beach
- 8 Camino Real Marketplace & Storke Plaza (Costco, Best Buy, Home Depot, Target, Albertson's, Metropolitan Cinemas, More)
- 9 Cabrillo Business Park (Decker's Brands, HP, Ergomotion, Flir, Pacific Beverage)
- 10 Goleta Valley Cottage Hospital
- 11 South Coast Deli
- 12 Crushcakes and Cafe
- 13 Public Storage
- 14 Sansum Clinic
- 15 US Post Office
- 16 Magnolia Shopping Center (Ralphs, Subway, Union Bank, Woody's BBQ)
- 17 Fairview Shopping Center (Sprouts, Ace Hardware, Bed, Bath & Beyond)
- 18 Future Project: The Village: 465 Housing Units
- 19 New Development: Heritage Ranch: 360 Housing Units



SIERRA FALSO  
805.869.2809  
sfalso@radiusgroup.com  
CA LIC. 01276646

MIKE CHENOWETH  
805.879.9608  
mchenoweth@radiusgroup.com  
CA LIC. 01213196





# “THE GOOD LAND”

The city of Goleta rests a few minutes north of Santa Barbara in the South Coast region of Santa Barbara County, roughly 330 miles south of San Francisco and 90 miles north of Los Angeles. Goleta and the Gaviota Coast to the north make up 12 picturesque miles of the Santa Barbara coastline. In fact the area is known as The Good Land for its sprawling ranches, fertile farms, lemon orchards and sustainable gardens that supply local restaurants and farmers markets year round. From the Goleta pier to Point Arguello, the area is a recreational paradise. Whether fishing off the pier, hiking the bluffs, surfing Campus Point or getting up close and personal with wildlife while kayaking in the Goleta Slough, there is something for everyone.

The South Coast region's central location, year-round mild climate, proximity to the University of California, Santa Barbara (UCSB), high quality of living, bustling technology industry and wealth of outdoor amenities are but a few of the reasons Goleta and Santa Barbara are regularly selected among the best places to live and work by numerous sources including livability.com, Money Magazine and Sunset Magazine.

## MARKET



### Ellwood Mesa Sperling Preserve

This 230-acre preserve is the largest publicly-owned coastal open space on Santa Barbara County's South Coast. Popular with runners, surfers, bikers and equestrians, the Ellwood Mesa Coastal Trail meanders through natural habitats and provides beach access via the Ellwood Mesa bluffs. The Monarch Butterfly Grove lies just north and spans 78 acres of eucalyptus groves giving safe shelter to the butterflies who bear its name from late autumn through winter.