



www.thepalmsoxnard.com

BROKER BONUS

\$1.00 PSF + Standard Commission
Any 5 year lease, until end of September



OFFICE, MEDICAL & RETAIL FOR LEASE | THE PALMS

2000, 2100, 2200, 2201, 2301 Outlet Center Dr. | Oxnard, CA 93036

LEASING INQUIRIES

Lisa Shields
RADIUS COMMERCIAL REAL ESTATE
805.879.9639 | lsields@radiusgroup.com
CA LIC. 01742786



MANAGED BY

the **Muller**
company
www.themullercompany.com

OFFICE, MEDICAL & RETAIL FOR LEASE | THE PALMS

2000, 2100, 2200, 2201, 2301 Outlet Center Dr. | Oxnard, CA 93036

Property Highlights

Excellent medical, office & retail opportunities

The Palms is centrally located in North Oxnard with easy access off US 101 FWY

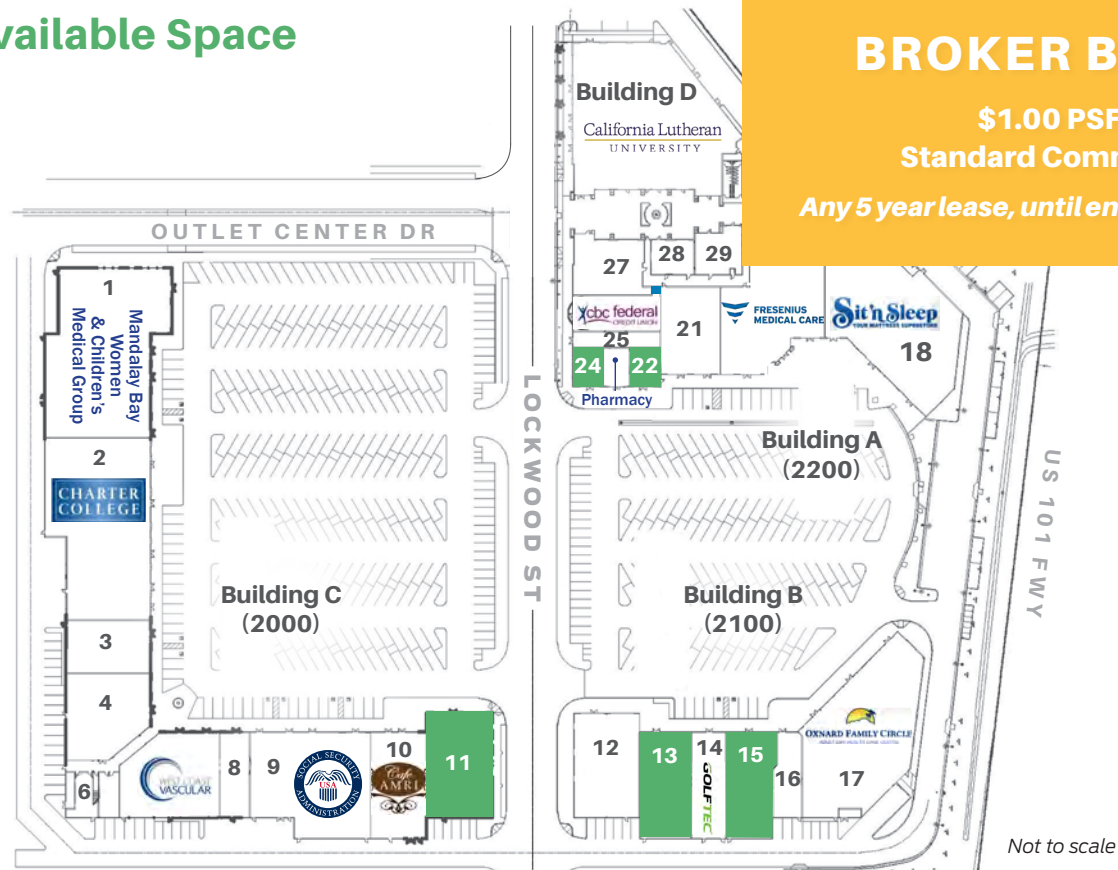
Located in the area's central business district near the industrial, medical & retail hubs

On-site Property Management

Surrounding Tenants



Available Space



BROKER BONUS

**\$1.00 PSF +
Standard Commission**

Any 5 year lease, until end of September

SUITE #	STATUS	SIZE	USE	LEASE RATE	NNN
#11 (C-300)	AVAILABLE	±5,926 RSF	Medical/Retail/Office	\$1.70 NNN	\$0.73
#13 (B-320)	AVAILABLE	±4,940 RSF	Medical/Retail/Office	\$1.70 NNN	\$0.73
#15 (B-340)	AVAILABLE	±4,521 RSF	Medical/Retail/Office	\$1.70 NNN	\$0.73
#22 (A-440)	AVAIL W/60 DAY NOTICE	±1,261 RSF	Medical/Retail/Office	\$1.70 NNN	\$0.73
#24 (A-450)	AVAIL W/60 DAY NOTICE	±1,416 RSF	Medical/Retail/Office	\$1.70 NNN	\$0.73

MANAGED BY

the **Muller**
company
www.themullercompany.com

LEASING INQUIRIES

Lisa Shields
RADIUS COMMERCIAL REAL ESTATE
805.879.9639 | lshields@radiusgroup.com

CA LIC. 01742786

THE PALMS
www.thepalmsoxnard.com

OFFICE, MEDICAL & RETAIL FOR LEASE | THE PALMS

2000, 2100, 2200, 2201, 2301 Outlet Center Dr. | Oxnard, CA 93036

Surrounding Medical & Major Retailers



Demographics Source: SitesUSA 2025

	1 Mile	3 Mile	5 Mile
Population	12,726	95,610	255,633
HHI	\$130,631	\$116,838	\$124,402
Daytime Pop.	13,747	75,447	157,342

Traffic Counts Source: SitesUSA 2025

101 Freeway at Rice Ave.:	153,699 ADT
E. Gonzales Rd & Rice Ave.:	44,564 ADT

THE PALMS
www.thepalmsoxnard.com

MANAGED BY
the Muller
company
www.themullercompany.com

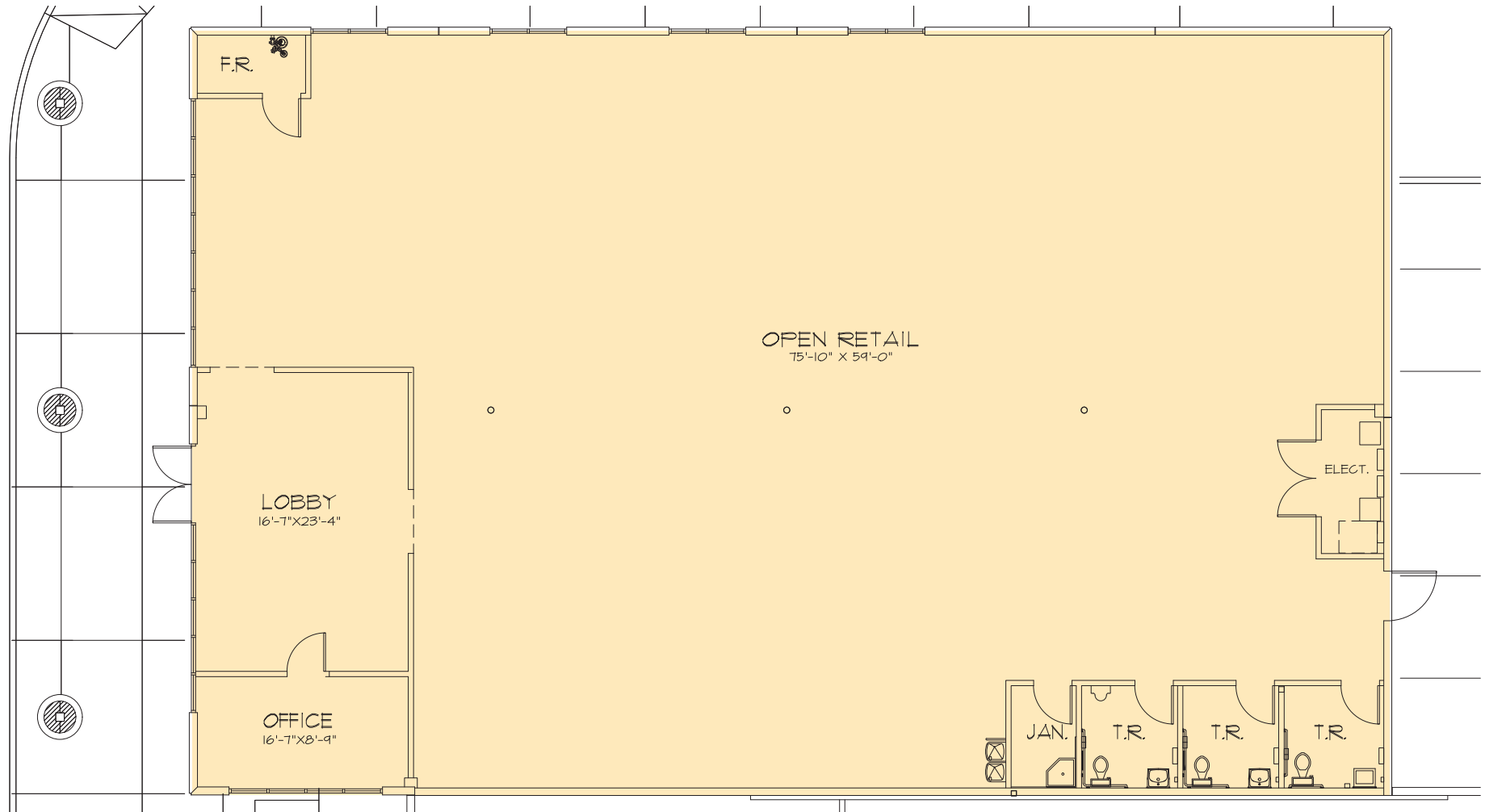
LEASING INQUIRIES

Lisa Shields
RADIUS COMMERCIAL REAL ESTATE
805.879.9639 | lshields@radiusgroup.com
CA LIC. 01742786

OFFICE, MEDICAL & RETAIL FOR LEASE | THE PALMS

2000, 2100, 2200, 2201, 2301 Outlet Center Dr. | Oxnard, CA 93036

SUITE C-300 (#11 ON SITE PLAN) | ±5,926 RSF



MANAGED BY

THE PALMS 
www.thepalmsoxnard.com

the **Muller**
company
www.themullercompany.com

LEASING INQUIRIES

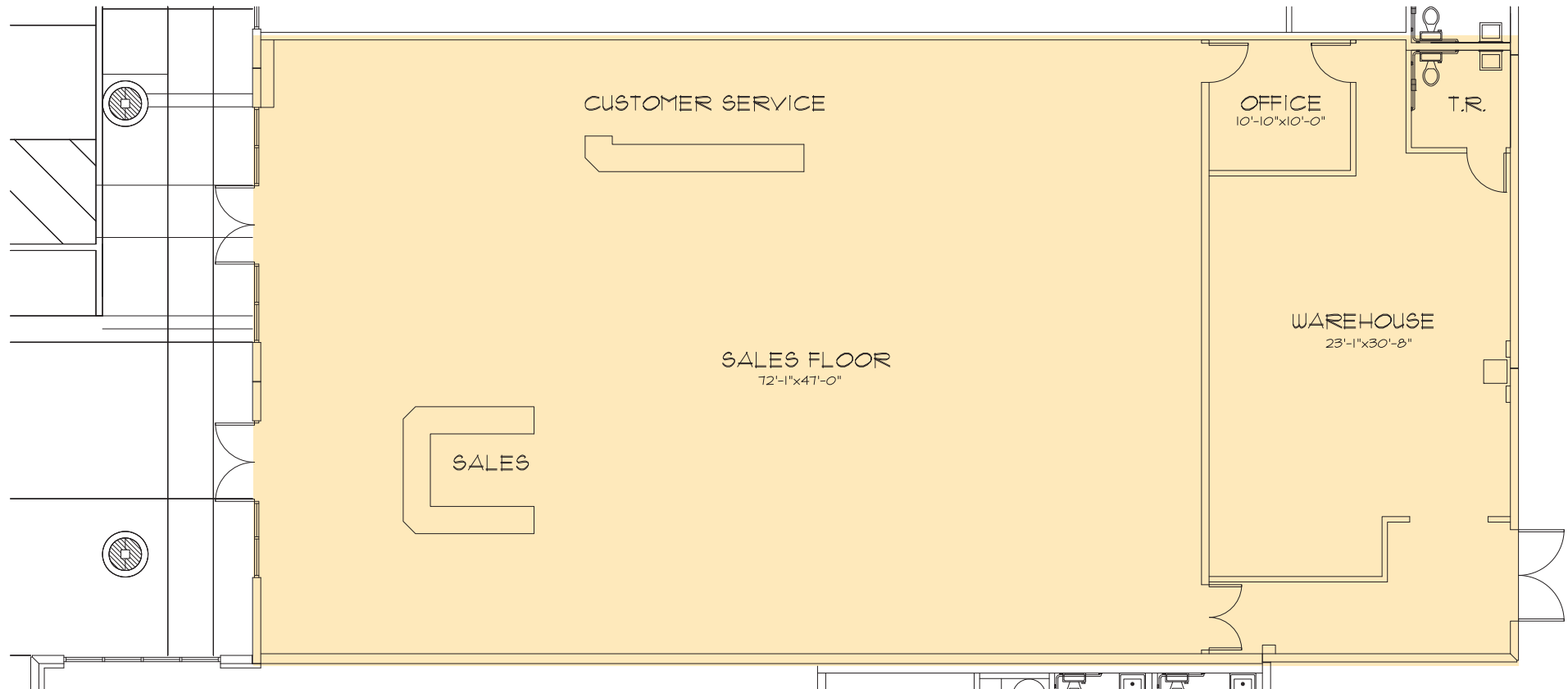
Lisa Shields
RADIUS COMMERCIAL REAL ESTATE
805.879.9639 | lshields@radiusgroup.com

CA LIC. 01742786

OFFICE, MEDICAL & RETAIL FOR LEASE | THE PALMS

2000, 2100, 2200, 2201, 2301 Outlet Center Dr. | Oxnard, CA 93036

SUITE B-320 (#13 ON SITE PLAN) | ±4,940 RSF



MANAGED BY

THE PALMS 
www.thepalmsoxnard.com

the **Muller**
company
www.themullercompany.com

LEASING INQUIRIES

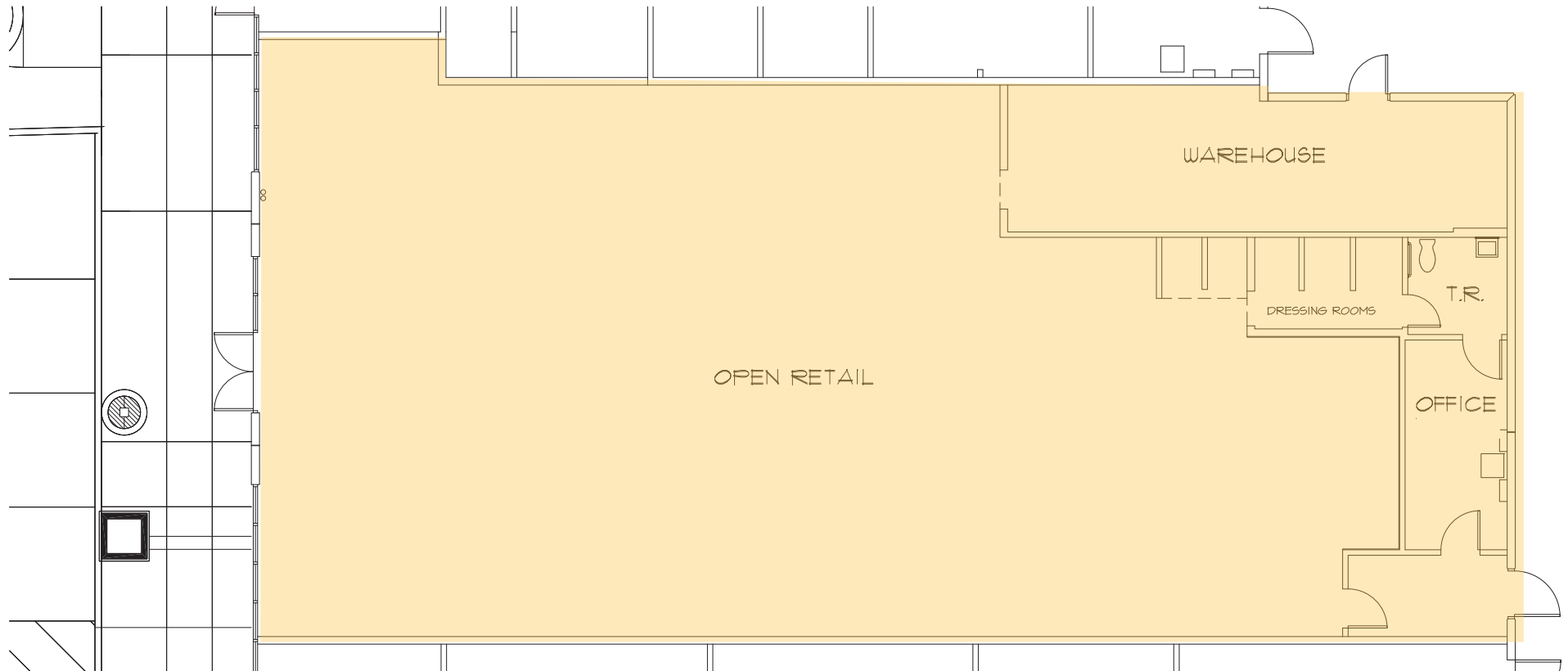
Lisa Shields
RADIUS COMMERCIAL REAL ESTATE
805.879.9639 | lshields@radiusgroup.com

CA LIC. 01742786

OFFICE, MEDICAL & RETAIL FOR LEASE | THE PALMS

2000, 2100, 2200, 2201, 2301 Outlet Center Dr. | Oxnard, CA 93036

SUITE B-340 (#15 ON SITE PLAN) | ±4,521 RSF



MANAGED BY

THE PALMS 
www.thepalmsoxnard.com

the **Muller**
company
www.themullercompany.com

LEASING INQUIRIES

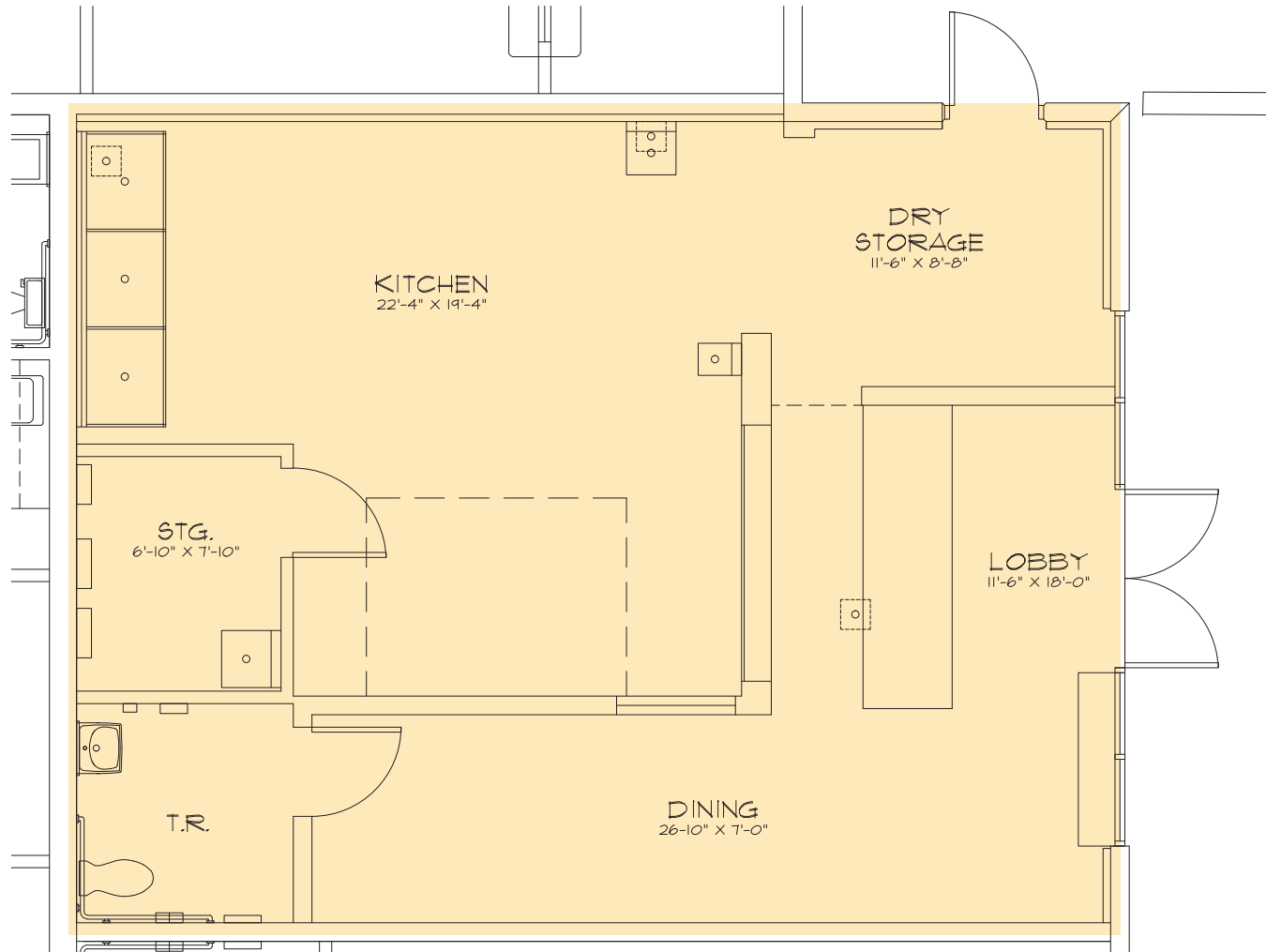
Lisa Shields
RADIUS COMMERCIAL REAL ESTATE
805.879.9639 | lshields@radiusgroup.com

CA LIC. 01742786

OFFICE, MEDICAL & RETAIL FOR LEASE | THE PALMS

2000, 2100, 2200, 2201, 2301 Outlet Center Dr. | Oxnard, CA 93036

SUITE A-440 (#22 ON SITE PLAN) | ±1,261 RSF



MANAGED BY

THE PALMS 
www.thepalmsoxnard.com

the **Muller**
company
www.themullercompany.com

LEASING INQUIRIES

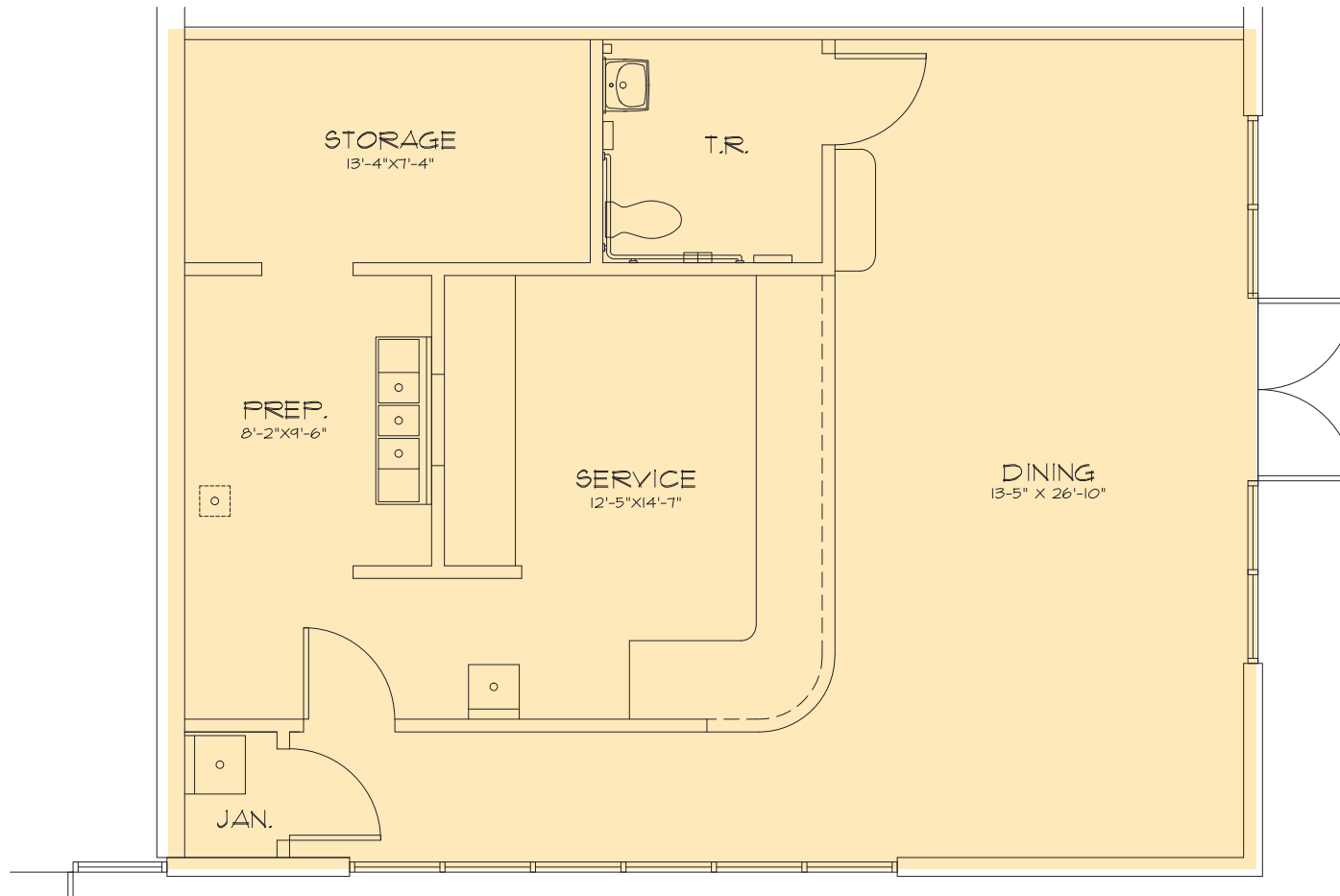
Lisa Shields
RADIUS COMMERCIAL REAL ESTATE
805.879.9639 | lshields@radiusgroup.com

CA LIC. 01742786

OFFICE, MEDICAL & RETAIL FOR LEASE | THE PALMS

2000, 2100, 2200, 2201, 2301 Outlet Center Dr. | Oxnard, CA 93036

SUITE A-450 (#24 ON SITE PLAN) | ±1,416 RSF



MANAGED BY

THE PALMS 
www.thepalmsoxnard.com

the **Muller**
company
www.themullercompany.com

LEASING INQUIRIES

Lisa Shields
RADIUS COMMERCIAL REAL ESTATE
805.879.9639 | lshields@radiusgroup.com

CA LIC. 01742786