



CLARK HOWELL COMMERCE CENTER

4767 CLARK HOWELL HIGHWAY, ATLANTA, GA 30349

LISTED WITH:



CONTACT:

RICK TUMLIN, CCIM, SIOR
rtumlin@lee-associates.com
404.442.2816

MICHAEL SUTTER, SIOR
msutter@lee-associates.com
404.442.2804

ELIZABETH KENNEDY
ekennedy@lee-associates.com
404.781.2106

OWNED & MANAGED BY:

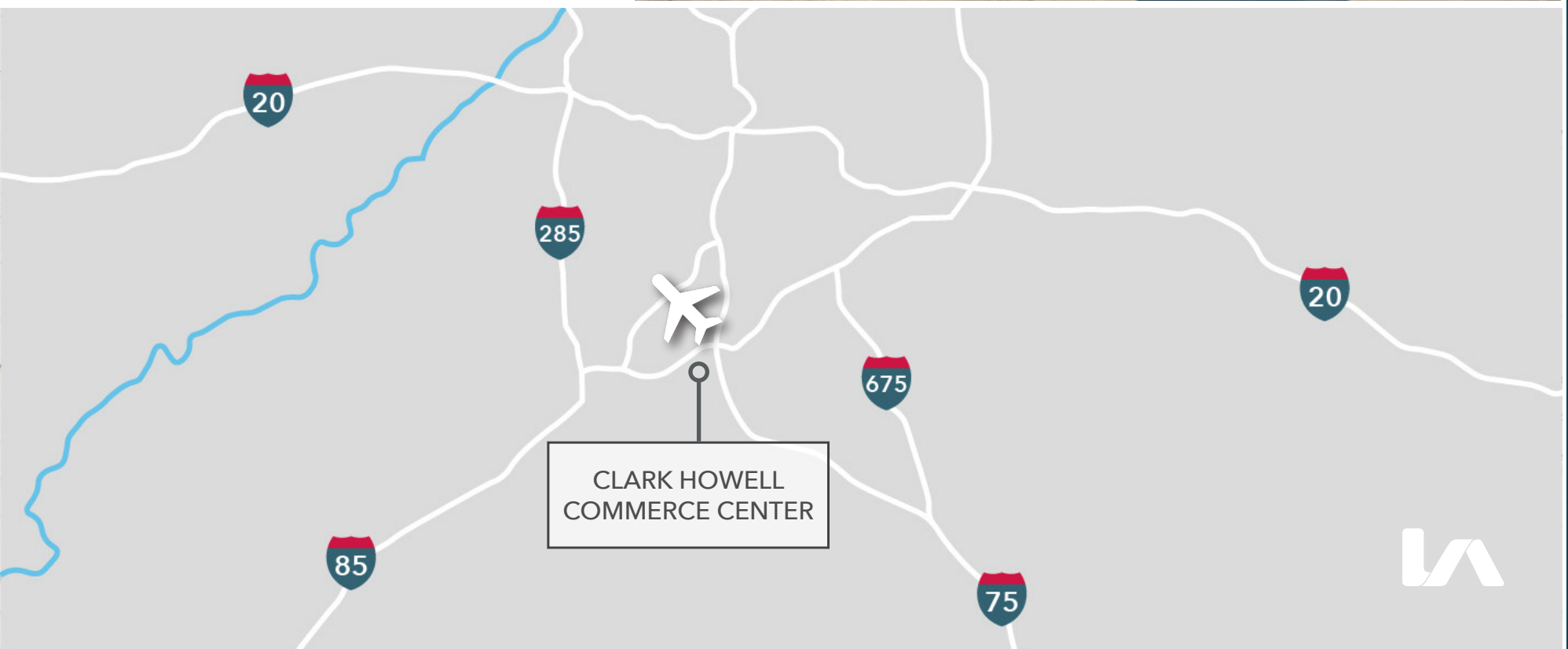


LEE & ASSOCIATES - ATLANTA | 404.442.2810 | 3500 LENOX ROAD, SUITE 1600, ATLANTA, GA 30326 | WWW.LEE-ASSOCIATES.COM/ATLANTA

All information regarding property for sale, rental or financing is from sources deemed reliable, but no warranty or representation is made to the accuracy thereof and same is submitted to errors, omissions, change of price, rental or other conditions prior to sale, lease or financing or withdrawal without notice. No liability of any kind is to be imposed on the broker herein.

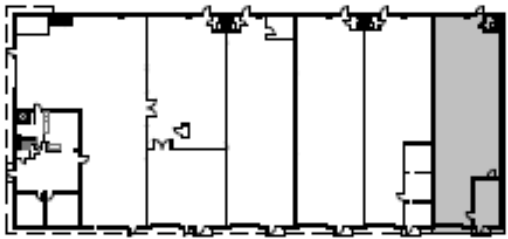
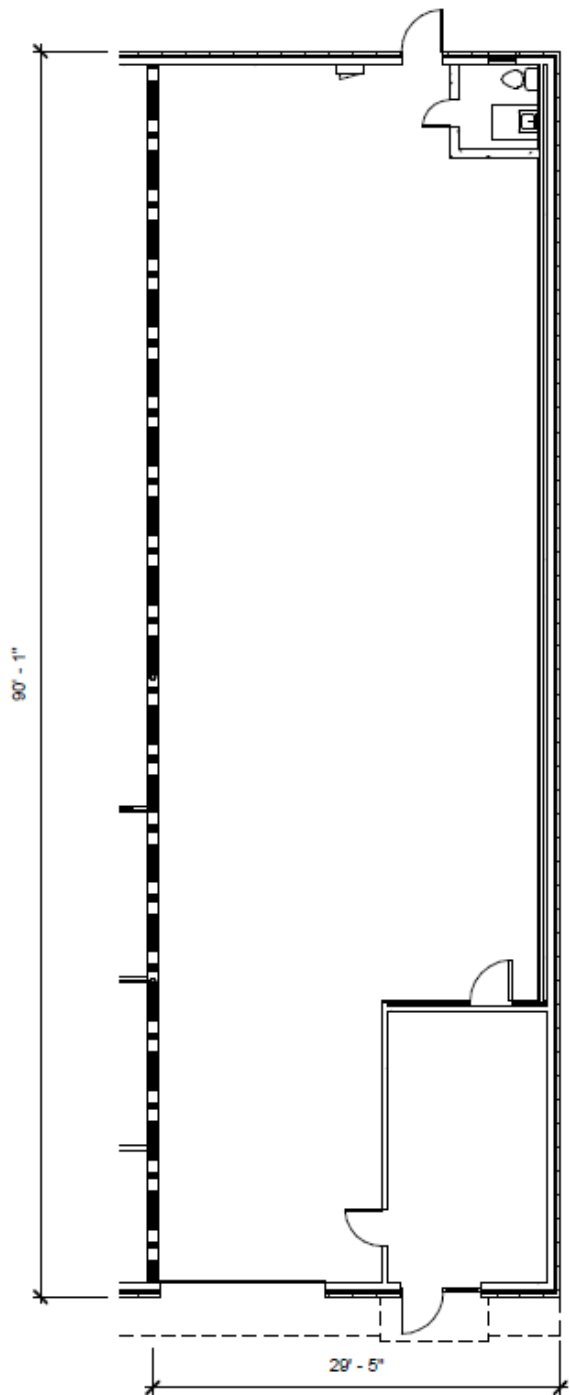
PROPERTY OVERVIEW

- Suite 2: 2,736 SF
 - Suite 3: 2,681 SF
 - Suite 5: 2,721 SF
 - Suite 6: 3,114 SF
 - Suite 7: 5,525 SF
- Total Contiguous SF: 5,417 SF**
- Total Contiguous SF: 11,360 SF**
- 15' minimum clear height
 - Grade level loading (12' x 12') doors
 - 90' - 100' building depths
 - Warehouse LED lighting
 - Built in 1979
 - 1.6 miles to Hartsfield-Jackson Atlanta International Airport
 - 0.6 miles to I-285



4767 CLARK HOWELL HIGHWAY

Suite 2
2,736 RSF
303 SF Office
1 Grade Level Door

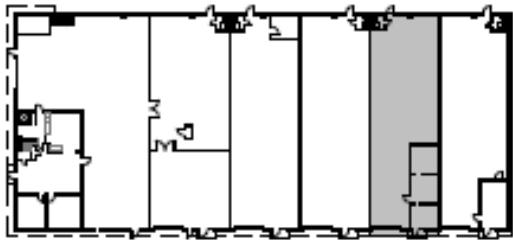
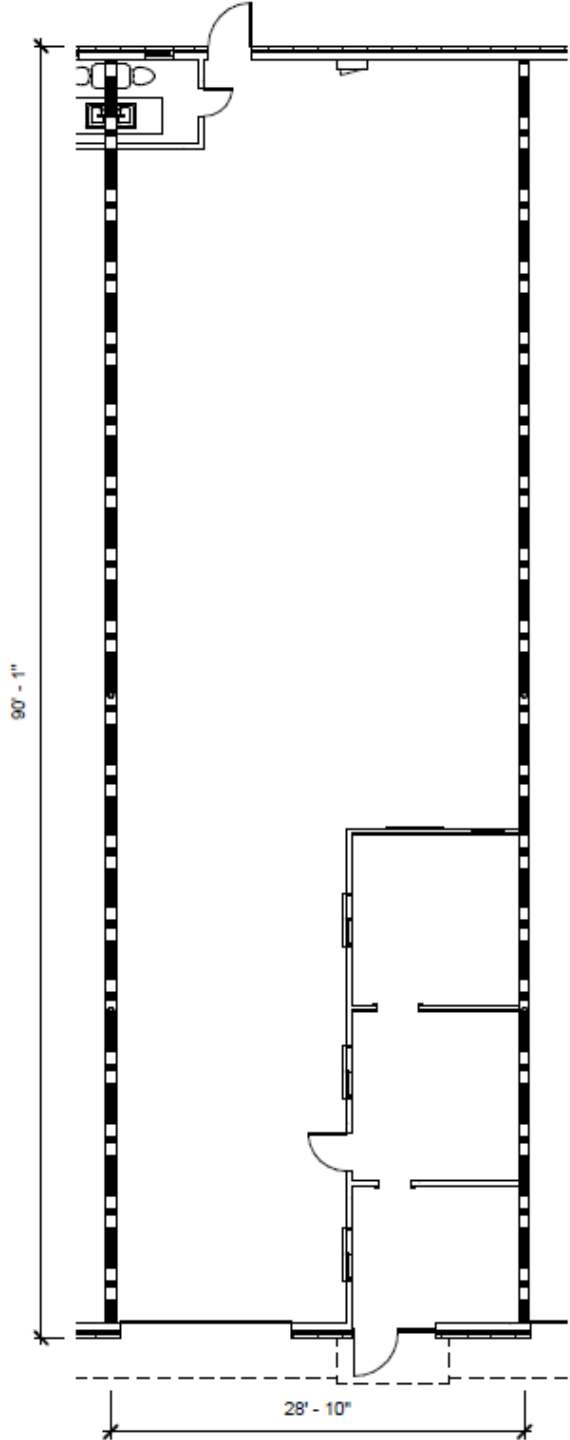


KEY PLAN



4767 CLARK HOWELL HIGHWAY

Suite 3
2,681 RSF
468 SF Office
1 Grade Level Door

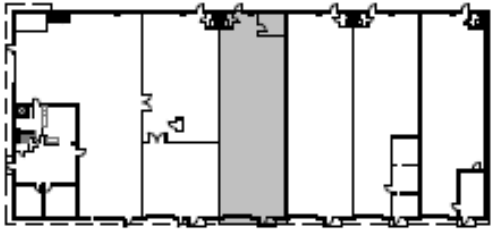
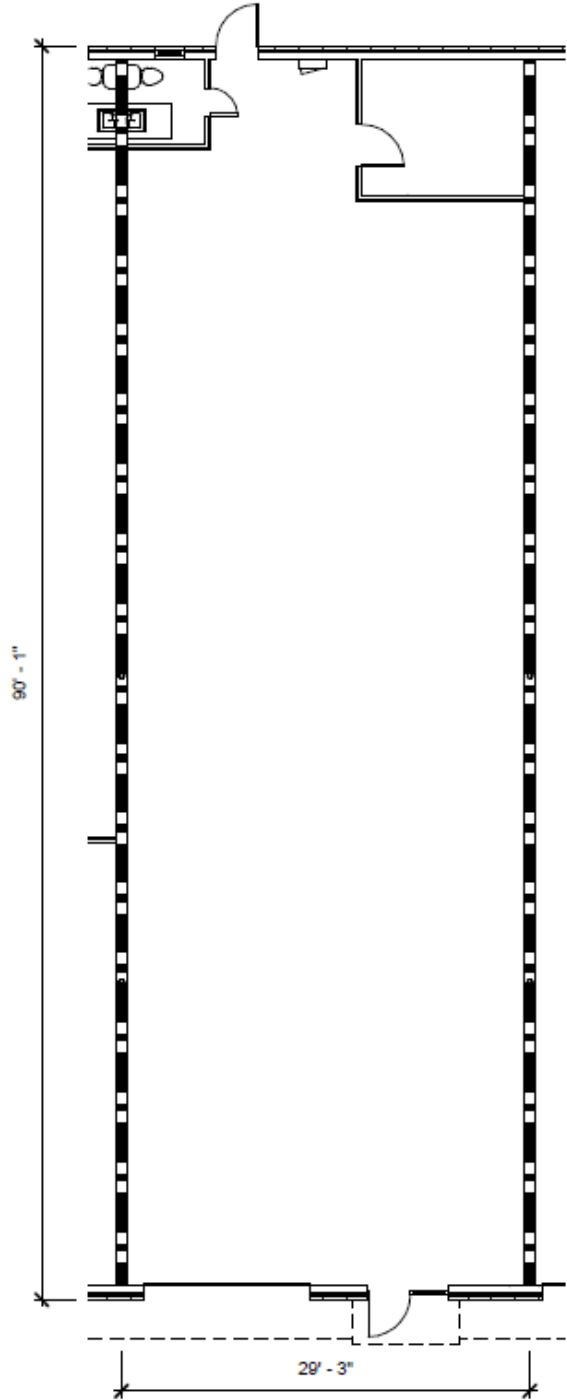


KEY PLAN



4767 CLARK HOWELL HIGHWAY

Suite 5
2,721 RSF
1 Grade Level Door

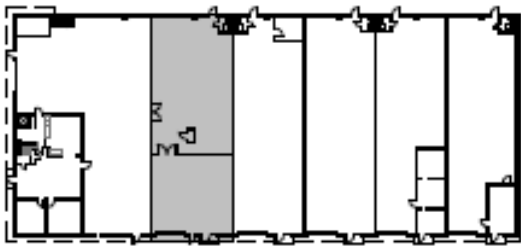
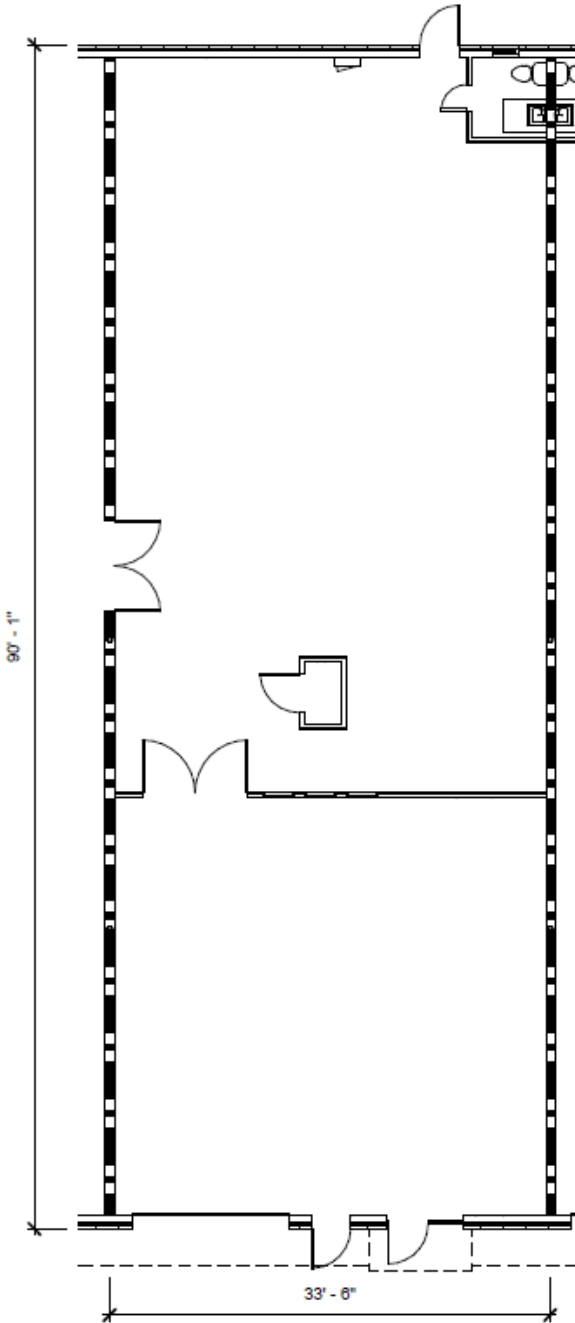


KEY PLAN



4767 CLARK HOWELL HIGHWAY

Suite 6
3,114 RSF
1,202 SF Office
1 Grade Level Door

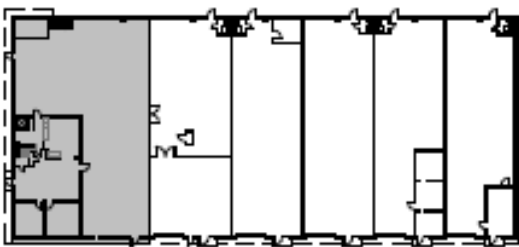
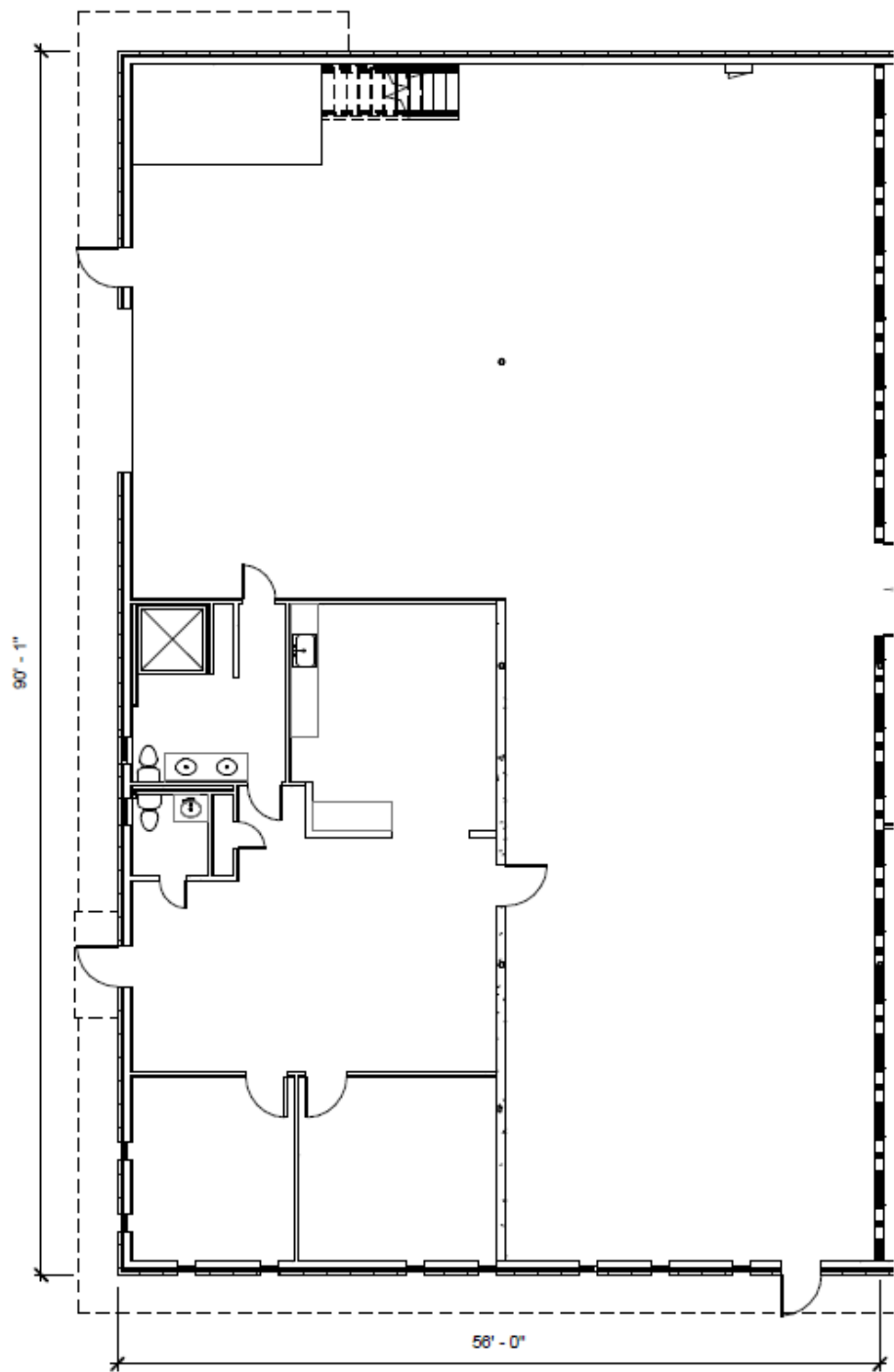


KEY PLAN



4767 CLARK HOWELL HIGHWAY

Suite 7
5,525 RSF
1,628 SF Office
1 Grade Level Door



KEY PLAN

